

Prizm Content Connect Plus Installation Guide for Windows

Version 5.0

Published Feb 2012

Accusoft believes the information in this publication is accurate as of its publication date. The information is subject to change without notice.

THE INFORMATION IN THIS PUBLICATION IS PROVIDED AS IS. WE MAKES NO REPRESENTATIONS OR WARRANTIES OF ANY KIND WITH RESPECT TO THE INFORMATION IN THIS PUBLICATION, AND SPECIFICALLY DISCLAIMS IMPLIED WARRANTIES OF MERCHANTABILITY OR FITNESS FOR A PARTICULAR PURPOSE.

Use, copying, and distribution of any software described in this publication requires an applicable software license.

For the most up-to-date listing of product names, see www.accusoft.com.

All other trademarks used herein are the property of their respective owners.

Attributions, Notices & Copyrights

Apache PDFBox (<http://pdfbox.apache.org/>)
Copyright 2002-2010 The Apache Software Foundation
Download: <http://pdfbox.apache.org/download.html>
License: <http://www.apache.org/licenses/LICENSE-2.0>

Apache FontBox (<http://pdfbox.apache.org/>)
Copyright 2008-2010 The Apache Software Foundation
Download: <http://pdfbox.apache.org/download.html>
License: <http://www.apache.org/licenses/LICENSE-2.0>

Apache JempBox (<http://pdfbox.apache.org/>)
Copyright 2008-2010 The Apache Software Foundation
Download: <http://pdfbox.apache.org/download.html>
License: <http://www.apache.org/licenses/LICENSE-2.0>

Apache POI (<http://poi.apache.org/>)
Copyright 2001-2007 The Apache Software Foundation
Download: <http://www.apache.org/dyn/closer.cgi/poi/>
License: <http://www.apache.org/licenses/LICENSE-2.0>

Apache Commons FileUpload (<http://commons.apache.org/fileupload/>)
Copyright 2002-2008 The Apache Software Foundation
Download: http://commons.apache.org/fileupload/download_fileupload.cgi
License: <http://www.apache.org/licenses/LICENSE-2.0>

Apache Commons IO (<http://commons.apache.org/io/>)
Copyright 2001-2008 The Apache Software Foundation
Download: http://commons.apache.org/io/download_io.cgi
License: <http://www.apache.org/licenses/LICENSE-2.0>

Apache Commons Lang (<http://commons.apache.org/lang/>)
Copyright 2001-2010 The Apache Software Foundation
Download: http://commons.apache.org/lang/download_lang.cgi
License: <http://www.apache.org/licenses/LICENSE-2.0>

Apache Commons Logging (<http://commons.apache.org/logging/>)
Copyright 2003-2007 The Apache Software Foundation
Download: http://commons.apache.org/logging/download_logging.cgi
License: <http://www.apache.org/licenses/LICENSE-2.0>

ImageMagick (<http://www.imagemagick.org>)
Copyright 1999-2010 ImageMagick Studio LLC.
Download: <http://www.imagemagick.org/script/binary-releases.php>
License: <http://www.imagemagick.org/script/license.php>

ffmpeg (<http://ffmpeg.org/>)
Copyright (C) 2000, 2001, 2002 Fabrice Bellard

Source: <install path>\src\ffmpeg\r20545\
Download: http://image_magick.veidrodix.com/image_magick/binaries/ImageMagick-6.6.5-3-Q16-windows-static.exe
License (GPL v3): <install path>\Prizm\licenses\ImageMagick\Notice-1.txt
Attributions, Notices & Copyrights
Implementation/Integration: This open source product has not been recompiled and a call to binary file is directly made from the code, keeping the binaries totally separate from the Prizm Source Code.
dcraw.exe (<http://www.cybercom.net/~dcoffin/dcraw/>)
Copyright (C) 1997-2008 by Dave Coffin.
Source: <install path>\src\dcraw\9.03\
Download: http://image_magick.veidrodix.com/image_magick/binaries/ImageMagick-6.6.5-3-Q16-windows-static.exe
License (GPL v3): <install path>\Prizm\licenses\ImageMagick\Notice-1.txt
Implementation/Integration: This open source product has not been recompiled and a call to binary file is directly made from the code, keeping the binaries totally separate from the Prizm Source Code.

hp2xx.exe (<http://www.gnu.org/s/hp2xx/>)
Copyright (C) 1998 - 2000 M. Kroeker, 1992 - 1994 H. Werntges.
Source: <install path>\src\hp2xx\3.4.2\
Download: http://image_magick.veidrodix.com/image_magick/binaries/ImageMagick-6.6.5-3-Q16-windows-static.exe
License (GPL v2): <install path>\Prizm\licenses\ImageMagick\hp2xx_gpl-2.0.txt
Implementation/Integration: This open source product has not been recompiled and a call to binary file is directly made from the code, keeping the binaries totally separate from the Prizm Source Code.

Java Advanced Imaging API (<http://java.sun.com/javase/technologies/desktop/media/jai/>)
Copyright (c) 2006 Sun Microsystems, Inc., 4150 Network Circle, Santa Clara, California 95054, U.S.A. All rights reserved.
Download: http://download.java.net/media/jai/builds/release/1_1_3/
License: http://download.java.net/media/jai/builds/release/1_1_3/LICENSE-jai.txt

Java Advanced Imaging Image I/O Tools
(<http://java.sun.com/javase/technologies/desktop/media/>)
Copyright (c) 2006 Sun Microsystems, Inc., 4150 Network Circle, Santa Clara, California 95054, U.S.A. All rights reserved.
Download: <http://download.java.net/media/jai-imageio/builds/release/1.1/License:>
http://download.java.net/media/jai-imageio/builds/release/1.1/LICENSE-jai_imageio.txt

JavaMail 1.4.3 (<http://www.oracle.com/technetwork/java/javamail/index.html>)
Copyright © 2009 Sun Microsystems, Inc., 4150 Network Circle, Santa Clara, California 95054, U.S.A. All rights reserved.
Download: <http://www.oracle.com/technetwork/java/javamail/index-138643.html>
License: http://download.oracle.com/otn-pub/java/licenses/javamail-1.4.3-oth-JPR_license_1.html

JDOM

This product includes software developed by the JDOM Project (<http://www.jdom.org/>).
Copyright (C) 2000-2004 Jason Hunter & Brett McLaughlin. All rights reserved.
Source: <http://www.jdom.org/downloads/source.html>
Download: <http://www.jdom.org/downloads/index.html>
License: <install path>\Prizm\licenses\jdom\LICENSE.txt
(<http://www.jdom.org/docs/faq.html#a0030>)

JRE 1.6.0.22 (<http://java.sun.com/products/archive/j2se/6u22/index.html>)
Copyright © 2006, 2010, Oracle and/or its affiliates. All rights reserved.
Download: <http://www.oracle.com/technetwork/java/javasebusiness/downloads/java-archive-downloads-javase6-419409.html#jre-6u22-oth-JPR>
License: <http://www.oracle.com/technetwork/java/javase/terms/license/index.html>

ODF Converter (<http://odf-converter.sourceforge.net/>)
Copyright (c) 2006-2008, Clever Age, DLaLOGIKa, Sonata Software Ltd All rights reserved.
Download: <http://sourceforge.net/projects/odf-converter/files/>
License: <http://odf-converter.sourceforge.net/#license>

OpenOffice.org Portable (http://portableapps.com/apps/office/openoffice_portable)
Copyright 2002,2008 Sun Microsystems, Inc.
Source: <http://sourceforge.net/projects/portableapps/files/Source%20%28OpenOffice.org%29/OpenOffice.org%203.2.0%20Source/>
Downloads: http://sourceforge.net/projects/portableapps/files/OpenOffice.org%20Portable/OpenOffice.org%20Portable%203.2.0/OpenOfficePortable_3.2.0_English.paf.exe/download

http://sourceforge.net/projects/portableapps/files/OpenOffice.org%20Portable/OpenOffice.org%20Portable%203.0/OpenOffice.org_Portable_3.0_en-us.paf.exe/download

Implementation/Integration: This open source product has not been recompiled and a call to binary file is directly made from the code, keeping the binaries totally separate from the Prizm Source Code.

String Search (<http://johannburkard.de/software/stringsearch/>)
StringSearch - high-performance pattern matching algorithms in Java
Copyright (c) 2003-2010 Johann Burkard
Download: <http://johannburkard.de/software/stringsearch/>
License: <http://johannburkard.de/software/stringsearch/copying.txt>

The Legion of the Bouncy Castle
Copyright (c) 2000-2009 The Legion Of The Bouncy Castle (<http://www.bouncycastle.org>)
Download: http://bouncycastle.org/latest_releases.html
License: <http://www.bouncycastle.org/licence.html>

Touch.exe (http://www.codeproject.com/KB/applications/touch_win.aspx)
Copyright 2002 by Jörgen Sigvardsson
Download: http://www.codeproject.com/KB/applications/touch_win.aspx
License: http://www.codeproject.com/KB/applications/touch_win.aspx

JTNEF (<http://www.freeutils.net/source/jtnef/>)
The JTNEF package used in this product is copyright (c) 2003-2010 by Amichai Rothman.
JavaBeans Activation Framework
(<http://www.oracle.com/technetwork/java/javase/downloads/index-135046.html>)
Download: <http://www.oracle.com/technetwork/java/javasebusiness/downloads/java-archive-downloads-java-plat-419418.html#jaf-1.1-fr-oth-JPR>
License: http://download.oracle.com/otn-pub/java/licenses/jaf-1.1-mrel-spec-oth-JPR_license_1.html

SWF Tools (<http://www.swftools.org>)
Source: <install path>/src/SWFTools/0.9.0/

Download: <http://www.swftools.org/swftools-0.9.0.exe>
Attributions, Notices & Copyrights

License (GPL v2): <install path>/Prizm/licenses/SWF Tools/gpl-2.0.txt
Implementation/Integration: This open source product has not been recompiled and a call to binary file is directly made from the code, keeping the binaries totally separate from the Prizm Source Code.

Tanuki Java Service Wrapper (<http://www.tanukisoftware.com>)
Copyright (C) 1999, 2010 Tanuki Software, Ltd. All rights reserved.
The Software Program includes software and documentation components developed in part by Silver Egg Technology, Inc. ("SET") prior to 2001 and released under the following license.

Copyright (c) 2001 Silver Egg Technology
Permission is hereby granted, free of charge, to any person obtaining a copy of this software and associated documentation files (the "Software"), to deal in the Software without restriction, including without limitation the rights to use, copy, modify, merge, publish, distribute, sub-license, and/or sell copies of the Software, and to permit persons to whom the Software is furnished to do so, subject to the following conditions:

The above copyright notice and this permission notice shall be included in all copies or substantial portions of the Software.

GraphicsUtil (<http://www.dncompute.com/blog/2008/07/17/graphicsutil-a-utility-class-for-drawing-arrows.html>)

Copyright (c) 2008 Noel Billig (www.dncompute.com)

Download: <http://www.dncompute.com/blog/2008/07/17/graphicsutil-a-utility-class-for-drawing-arrows.html>

License: MIT (in source)

URL Validator (<http://ctrloptcmd.com/archives/587/actionscript-3-url-validator-class/>)

Copyright 2009 Martin Jacobsen

Download: <http://ctrloptcmd.com/as3/URLValidator.as>

License: (in source)

jQuery (<http://jquery.org/>)

Copyright (c) 2011 John Resig

Download: http://docs.jquery.com/Downloading_jQuery

License: <http://jquery.org/license/>

Lazy Load - jQuery plugin for lazy loading images (<http://www.appelsiini.net/projects/lazyload>)

Copyright (c) 2007-2009 Mika Tuupola

Download: <http://www.appelsiini.net/projects/lazyload>

License: <http://www.opensource.org/licenses/mit-license.php>

jQuery.ScrollTo (<http://plugins.jquery.com/project/ScrollTo>)

Copyright (c) 2007-2009 Ariel Flesler

Download: <http://plugins.jquery.com/node/635/release>

License: MIT (in source)

ScrollView - jQuery plugin (<http://code.google.com/p/jquery-scrollview/>)

Copyright (c) 2009 Toshimitsu Takahashi

Download: <http://code.google.com/p/jquery-scrollview/downloads/detail?name=jquery.scrollview.js&can=2&q=>

License: <http://www.opensource.org/licenses/mit-license.php>

Viewport - jQuery selectors for finding elements in viewport
(<http://www.appelsiini.net/projects/viewport>)
Copyright (c) 2008-2009 Mika Tuupola
Download: <http://www.appelsiini.net/projects/viewport>
License: <http://www.opensource.org/licenses/mit-license.php>

transform: A jQuery cssHooks adding cross-browser 2d transform capabilities to \$.fn.css() and \$.fn.animate()
(<https://github.com/louisremi/jquery.transform.js>)
Copyright 2011 @louis_remi
Download: <https://github.com/louisremi/jquery.transform.js>
License: MIT (<https://github.com/louisremi/jquery.transform.js>)

jQuery UI (<http://jqueryui.com/>)
Copyright (c) 2011 Paul Bakaus
Download: <http://jqueryui.com/download>
License: <http://jquery-ui.googlecode.com/svn/tags/latest/MIT-LICENSE.txt>

jquery.waitforimages (<http://alexanderdickson.com/blog/2011/02/a-new-jquery-plugin-2/>)
Copyright (c) 2011 Alex Dickson
Download: <https://github.com/alexanderdickson/waitForImages>
License: <https://github.com/alexanderdickson/waitForImages/blob/master/README.md>

jQuery Context Menu Plugin (<http://abeautifulsite.net/blog/2008/09/jquery-context-menu-plugin/>)
Copyright A Beautiful Site, LLC
Download: <http://abeautifulsite.net/blog/2008/09/jquery-context-menu-plugin/>
License: MIT (in source)

jqprint (<http://plugins.jquery.com/project/jqPrint>)
Provided by Eros Fratini - eros@recoding.it
Download: <http://plugins.jquery.com/node/8069/release>
License: <http://www.opensource.org/licenses/mit-license.php>

jQuery Patch (<http://www.zachstronaut.com/posts/2009/08/07/jquery-animate-css-rotate-scale.html>)
2009-2010 Zachary Johnson www.zachstronaut.com
Download: <https://github.com/zachstronaut/jquery-animate-css-rotate-scale/>
License: MIT (<https://github.com/zachstronaut/jquery-animate-css-rotate-scale/blob/master/README>)

Google Translate API for .NET (<http://code.google.com/p/google-api-for-dotnet/>)
Copyright (c) 2008-2009 iron9light
Download: <http://code.google.com/p/google-api-for-dotnet/downloads/list>
License: <http://www.opensource.org/licenses/mit-license.php>
Other Terms: <http://code.google.com/apis/language/translate/terms.html>

SWFObject (<http://code.google.com/p/swfobject/>)
Provided by code.google.com
Download: <http://code.google.com/p/swfobject/downloads/list>
License: <http://www.opensource.org/licenses/mit-license.php>

Preface

This document describes how to install Prizm Content Connect Plus on Windows Server.

Intended Audience

This manual is intended for IT developers and administrators. Some familiarity with Java, JavaScript, and Windows OS is expected.

Revision History

The following changes have been made to this document.

| Revision History | Revision Date | Description |
|-------------------------|----------------------|---------------------------|
| Oct 2011 | | Updated for version 4.6.3 |
| Feb 2012 | | Updated for version 5.0 |

Table of Contents

| | |
|--|-----------|
| TABLE OF CONTENTS..... | 9 |
| CHAPTER 3..... | 12 |
| DEPLOYING SAMPLE CODE..... | 12 |
| CHAPTER 6..... | 25 |
| ENABLING ANNOTATIONS..... | 25 |
| PREREQUISITES..... | 25 |
| INSTALLATION..... | 25 |
| | 26 |
| CHAPTER 7..... | 26 |
| DISTRIBUTED CONFIGURATION SET UP..... | 26 |
| | 26 |

Introduction

Prizm Content Connect is a web-based online document viewer that can be embedded into any web page or web application. It is fast and fully customizable, and enables conversion of virtually any type of document (including Microsoft Word, or Excel, or PowerPoint document) to an Adobe ® Flash ® file (.swf). This file can be shared with other users who do not have the default viewing applications installed on their machines. These files can also be published over the web and accessed from anywhere in the world, or viewed with Adobe ® Flash ® Player across various platforms. The formatting, graphics, fonts, special characters, and colors of source documents are retained, regardless of the application used to create the original document.

Specifications: Server

Supported Operation Systems

The operating systems listed here have been tested with Prizm Content Connect and are officially supported:

- Windows 2003 Enterprise
- Windows 2003 Enterprise x64
- Windows 2003 Standard
- Windows 2003 Standard x64
- Windows Server 2008
- Windows Vista
- Windows Server 2008 x64
- Windows Vista x64
- Windows XP 32 & x64
- Windows 2000 32 & x64
- Windows 7 x64

All windows versions are supported including OEM, Retail, R2 etc

System Requirements

- Minimum 2GB RAM (Recommended 4GB+ RAM)
- 450 MB of free disk space
- Internet Explorer 5+ or Mozilla Firefox 2+

Specifications: Client

Prizm Content Connect is compatible with any JavaScript-enabled modern browser with Adobe Flash 9.0+ Plug-in (minimum) installed.

Installation

Installation of Prizm Content Connect is very straightforward for the Windows environment.

Make sure you are logged in as the Administrator

(Refer to Troubleshooting tips on how to login as Administrator on Vista)

Prizm Content Connect installs and starts the Prizm services that power the server side of the application using the following steps:

1. Creates Prizm Folder in the root directory (C:\Prizm)
2. Copies necessary files & folders
3. Sets up Registry Values
4. Sets up Environment Variables
5. Installs Prizm Service on port 18680, 18580 & 18691
6. Starts Prizm Service
7. Cleans install temporary files

Note- The installation might fail if you have any application already listening on ports 18680, 18580, 18581, 18582, 18583, 18584 & 18691. You will need to disable this application prior to Prizm Content Connect installation.

Verifying that installation was successful

There are 3 ways to verify that the services were successfully installed and started:

1. Go to Control Panel and then Services. You will see a service "Prizm" in the services list. Verify that the service is Started.
2. Go to <installpath>/logs directory, and open "proxyserver.log" file. Scroll down to the very end and verify that you the see the text similar to following:

```
=====
INFO | jvm 1 | 2011/04/06 02:16:25 |
INFO | jvm 1 | 2011/04/06 02:16:25 | Office Document Converter Proxy Server Started
INFO | jvm 1 | 2011/04/06 02:16:25 |
INFO | jvm 1 | 2011/04/06 02:16:25 |
=====
```

3. Browse to:
<http://localhost:18680/convert2swf> or <http://<ipaddress>:18680/>
This should show text like this. If you see text similar to below, it means it is running.
Prizm Conversion Server is running.
Server Time: Fri Jun 24 14:58:21 PDT 2011

Chapter 3

Sample Code

Sample code files are included with the Prizm Content Connect installation to show how integration can work.

Location of Sample Code for AJAX based desktop client: C:\Prizm\Samples\Base

Location of Sample Code for Mobile client: C:\Prizm\Samples\Mobile

Location of Sample Code for Zero Footprint client: C:\Prizm\Samples\ZeroFootprint

Detailed instructions for configuring and using the sample code are in the Developer Guide

Location of Developer Guide: C:\Prizm\

Deploying sample code

Step 1) Copy the sample code to C:\ProjectEnterpriseAnnotations

Step 2) Create a folder c:\tempcache and give it full read/write permission for all users

Step 3) Make sure that markups folder in C:\ProjectEnterpriseAnnotations has full read/write permission for all users. This is where markups will be stored.

Step 4) Open default.aspx or default.php (based on sample code chosen) and change the documentLocation parameter.

documentLocation is the location of your source document or document which you want to display in the Viewer.

documentLocation by default is set to C:\ProjectEnterpriseAnnotations in default.aspx/default.php

Step 5) Ensure that Prizm service is running in ControlPanel.

You can also verify that it is running by browsing to:

<http://localhost:18680/convert2swf> or <http://<ipaddress>:18680/>

This should show text like this. If you see text similar to below, it means it is running.

Prizm Conversion Server is running.

Server Time: Fri Jun 24 14:58:21 PDT 2011

Step 6) Deploy the sample code into IIS or Apache

Step 7) Browse the document in browser

<http://<servername>:port/ProjectEnterpriseAnnotations/default.aspx?document=Sample.doc>

or

<http://<servername>:port/samplecode-enterprise/default.php?document=Sample.doc>
where Sample.doc is the document in the c:\ProjectEnterpriseAnnotations or /var/www/html/
samplecode-enterprise or any other source directory you had chosen.

Registration & Activation

If you have received the evaluation version of Prizm Content Connect Plus, it will be fully functional for 30 days after its installation. This will allow you to convert documents and images to web ready viewable formats. The evaluation version of Prizm Content Connect Plus adds a DEMO watermark on the documents and also opens a popup when the viewer loads.

To use Prizm Content Connect Plus after this period expires or for business purposes, you must register your software copy and obtain a license.

Note that no license is needed to view converted documents – these can be viewed even on those computers where Prizm Content Connect Plus is not installed. The license is needed only to start the Prizm Content Connect Plus services and to convert documents.

After purchasing Prizm Content Connect Plus, you will receive a license key along with a customerid. Keep these in a safe place, as you will need them to activate the product. A single Prizm Content Connect Plus license allows you to install and setup the software on one server, for up to 25 users. A separate license should be bought for each additional server or machine, or each increment of 25 users.

Activating the product with your customerid & license key

Step1: Go to the Control Panel on your Windows Server & click on Administrative Tools. Go to Services.

(You can also open the Services window by typing 'services.msc' at the command prompt.) In the Services window, look for "Prizm" & Stop the service.

Step2: Go to C:\Prizm\conf folder

Use Notepad to open the proxyserver_jar.properties file

Look for "# Registration info" and enter your customerid & license key ("regkey") as shown below:

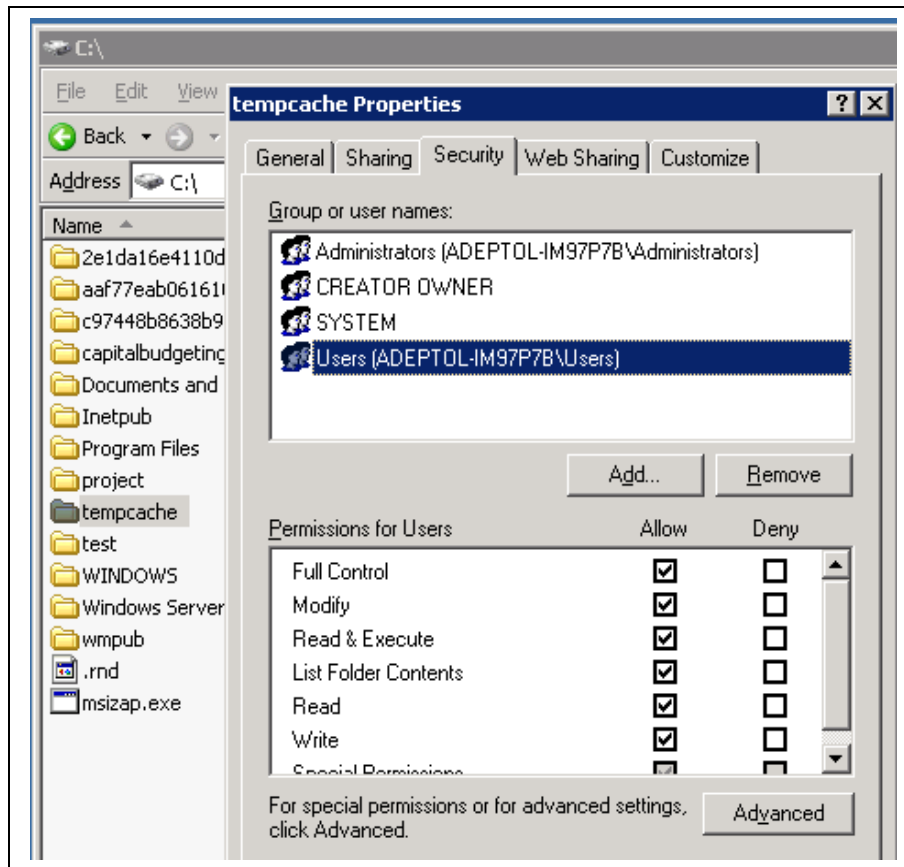
```
# Registration info
customerid=XXXXX
regkey=XXXX-XXXX-XXXX-XXXX
```

Contact us at support@accusoft.com if you have questions or problems while activating Prizm Content Connect Plus.

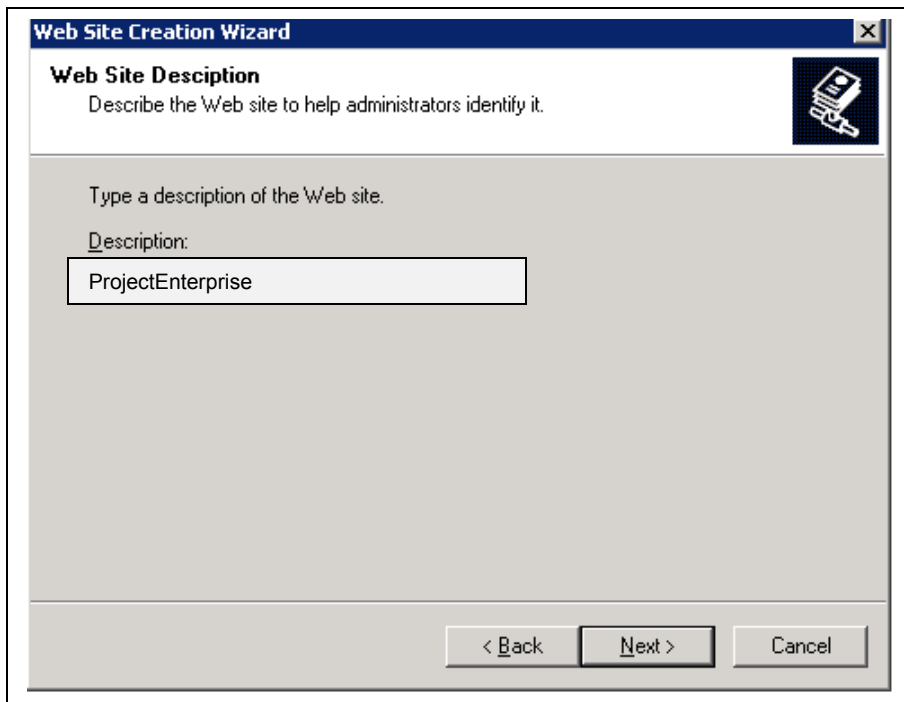
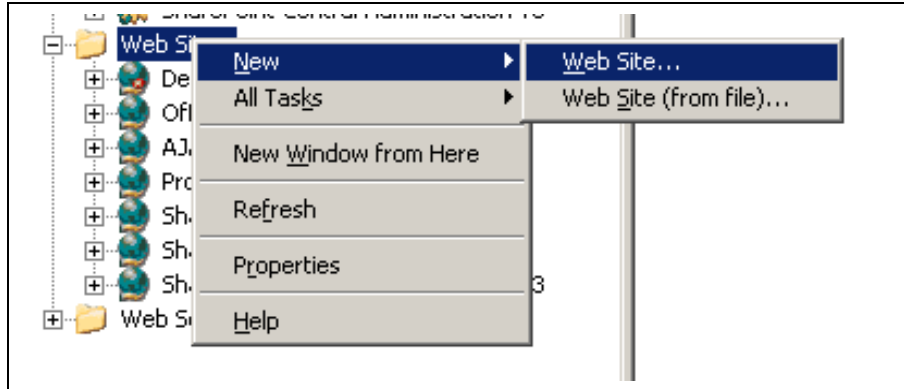
Deploying on IIS

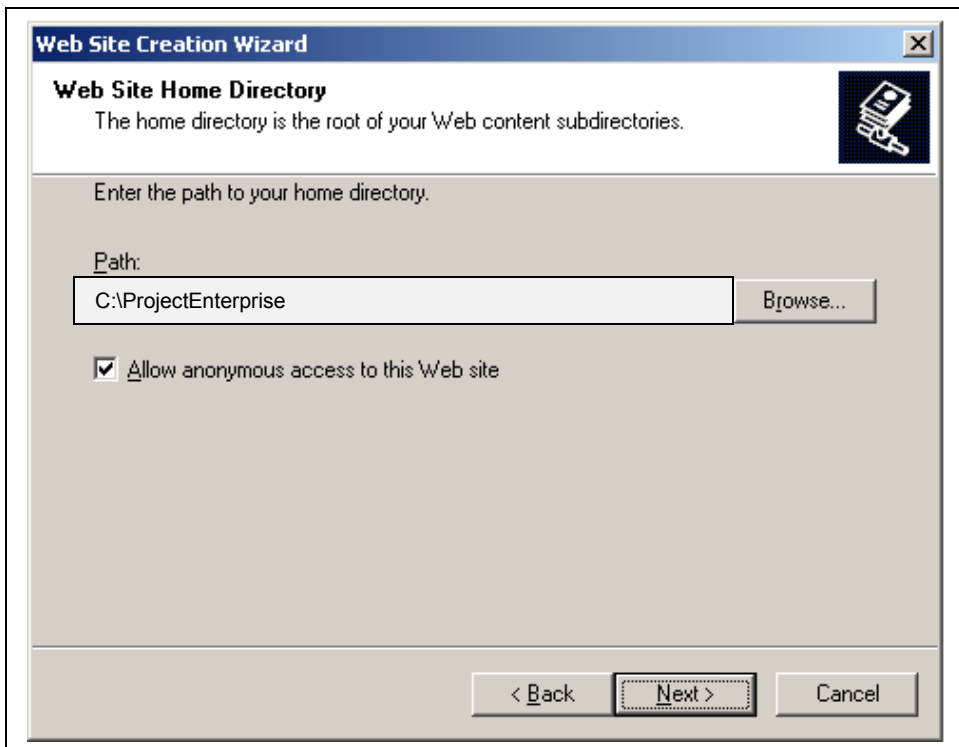
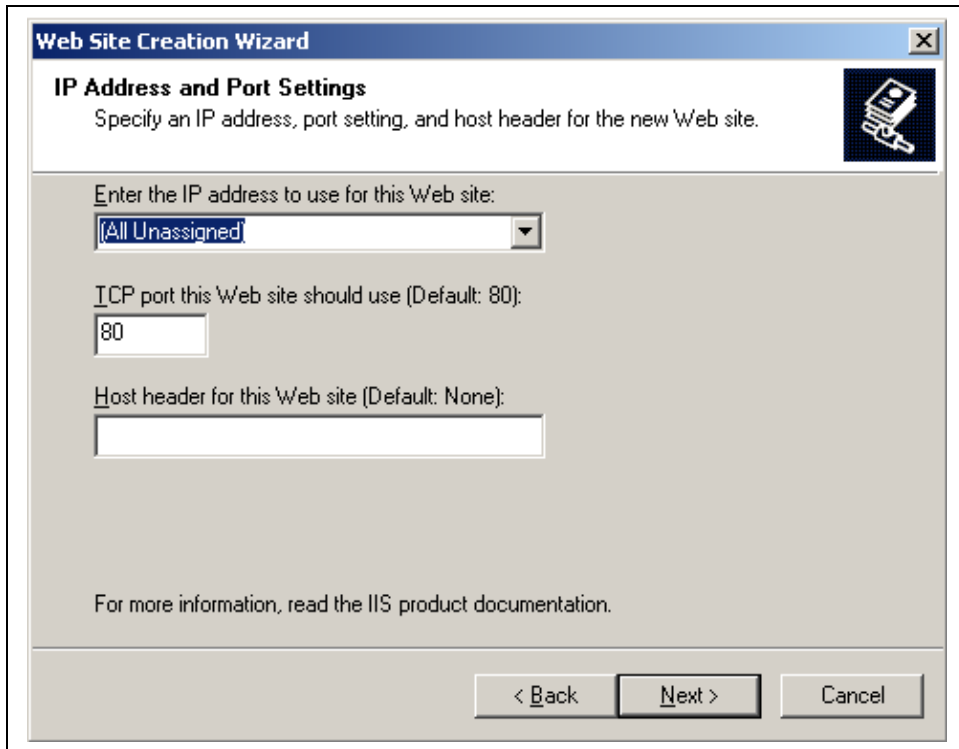
Deploying on IIS 6.0

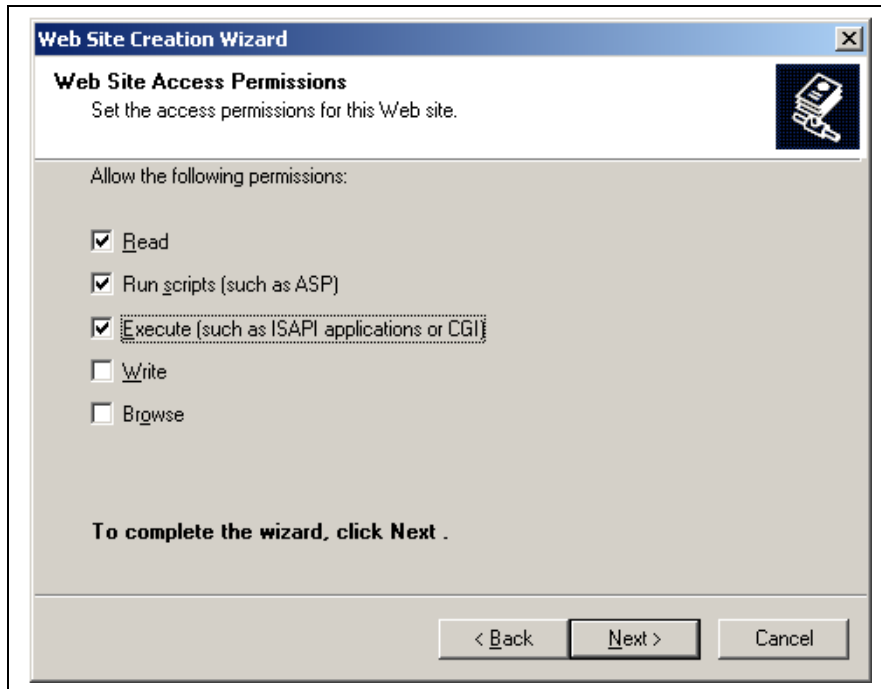
- Create a directory in the C: drive named tempcache (C:\tempcache)
- Give all users Write/Read permissions to C:\tempcache



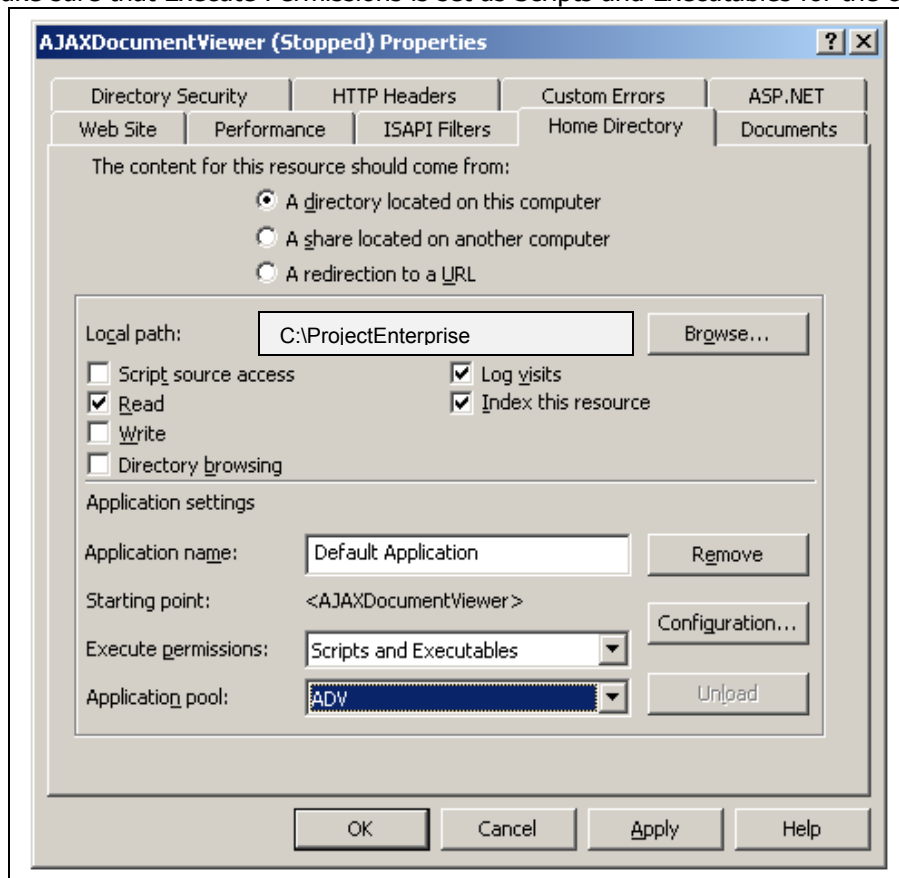
- Create a second directory in the C: drive named ProjectEnterprise (C:\ProjectEnterprise)
- Copy the sample code from C:\Prizm to C:\ProjectEnterprise
- Create a new Website or Virtual Directory in IIS named Project and point it to C:\ProjectEnterprise as shown below. Make sure you give all users Read, Write, and Execute permissions while creating the site







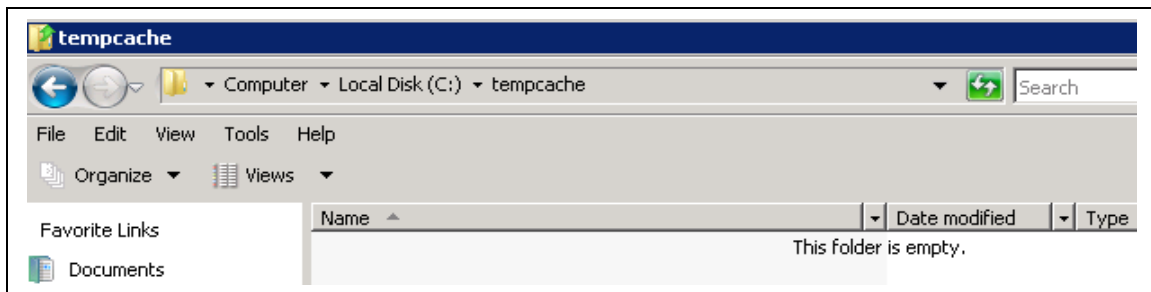
- Make sure that Execute Permissions is set as Scripts and Executables for the created site



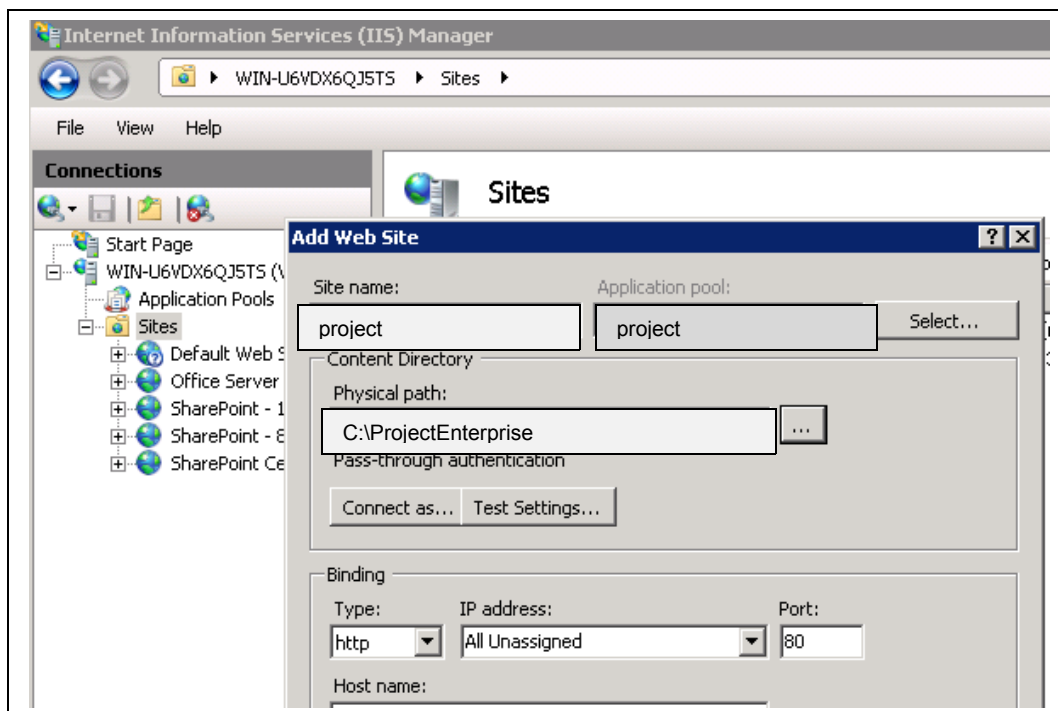
- Point your browser to <http://<server:port>/default.aspx?document=Sample.doc>
 - Ex. <http://localhost:80/default.aspx?document=Sample.doc> if you are using port 80 for the site on your local machine
 - Make sure Sample.doc exists in C:\ProjectEnterprise

Deploying on IIS 7.0

- 1) Create a directory in the C: drive named tempcache (C:\tempcache)
- 2) Give all users Write/Read permissions to C:\tempcache



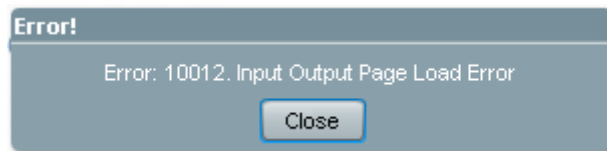
- 3) Create another directory in the C: drive named ProjectEnterprise (C:\ProjectEnterprise)
- 4) Copy the sample code from C:\Prizm to C:\ProjectEnterprise



- 5) Point your browser to <http://<server:port>/default.aspx?document=Sample.doc>
 - a. Ex. <http://localhost:80/default.aspx?document=Sample.doc> if you are using port 80 for the site on your local machine
 - b. Make sure Sample.doc exists in C:\ProjectEnterprise

Troubleshooting & Common Errors

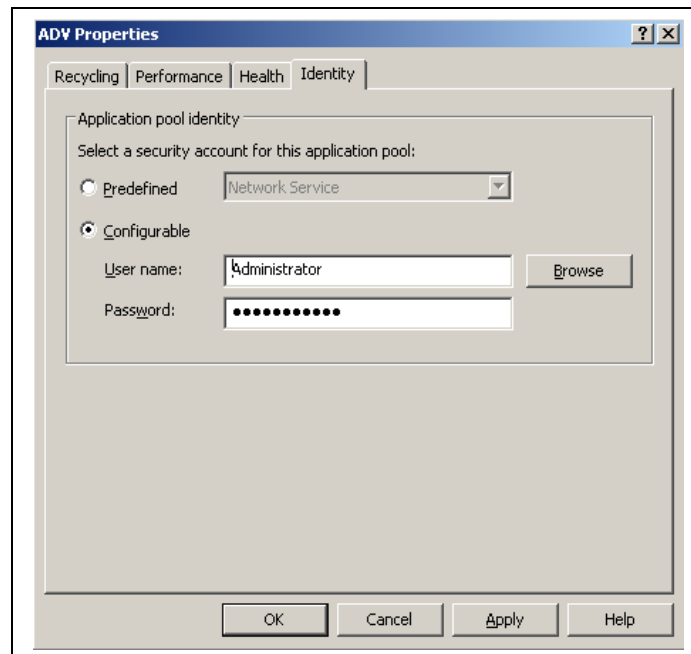
1) Input Output Page Load Error



The above error could occur due to following reasons:

- a) This could mean your default application pool does not have the permission to execute the convertdocument.asp or convert.aspx.

Click on the Application Pool that you created for the ProjectEnterprise site and right click on it to go to properties. Go to Identity and click on Configurable and enter Administrator username & password.



Restart IIS and Recycle the Application Pool and try index.asp again in a new browser window.

b) Ensure your settings.xml has the correct name of the conversion file being sent to convertdocument.asp or convert.aspx.

Ex.: If you are calling default.asp as <http://localhost/index.asp>, your settings.xml will look like this:

```
<settings>
<conversionFileURL> convertdocument.asp</conversionFileURL>
</settings>
```

c) make sure you are logged in as the Administrator to the local machine.

2) Input Output Page Conversion Error or convert.aspx could not be loaded

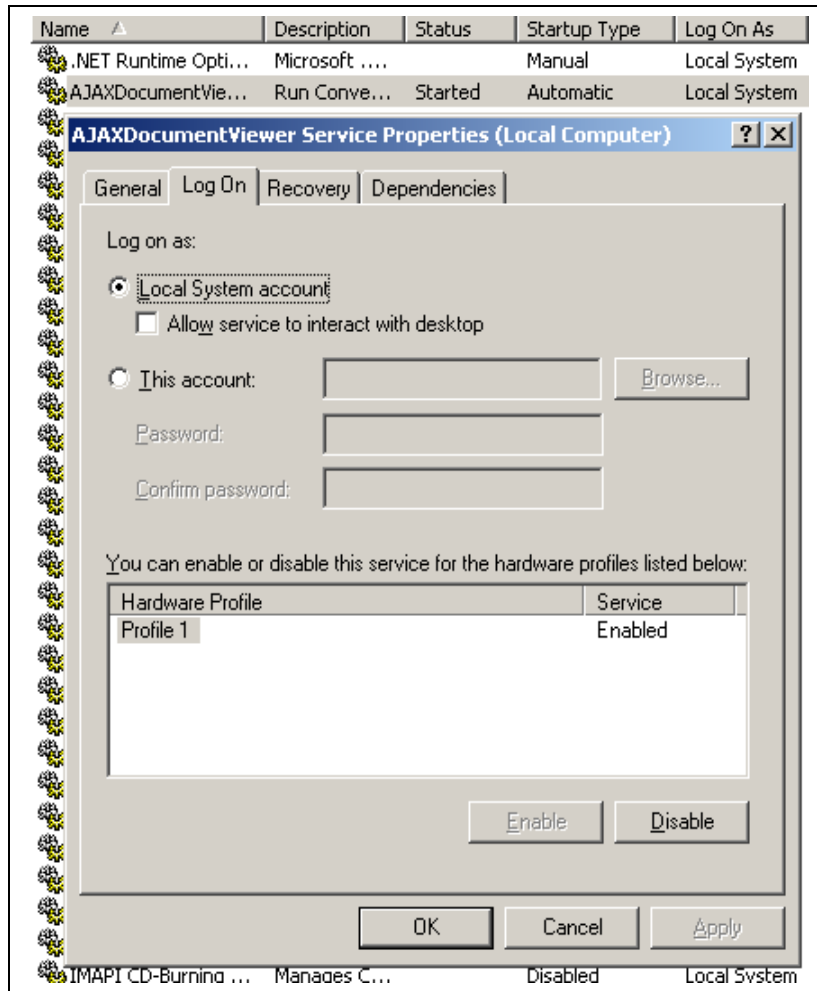
This error indicates that document conversion is not happening to a swf file. This could be due to following reasons:

a) Check Prizm service is running in Services under Control Panel.

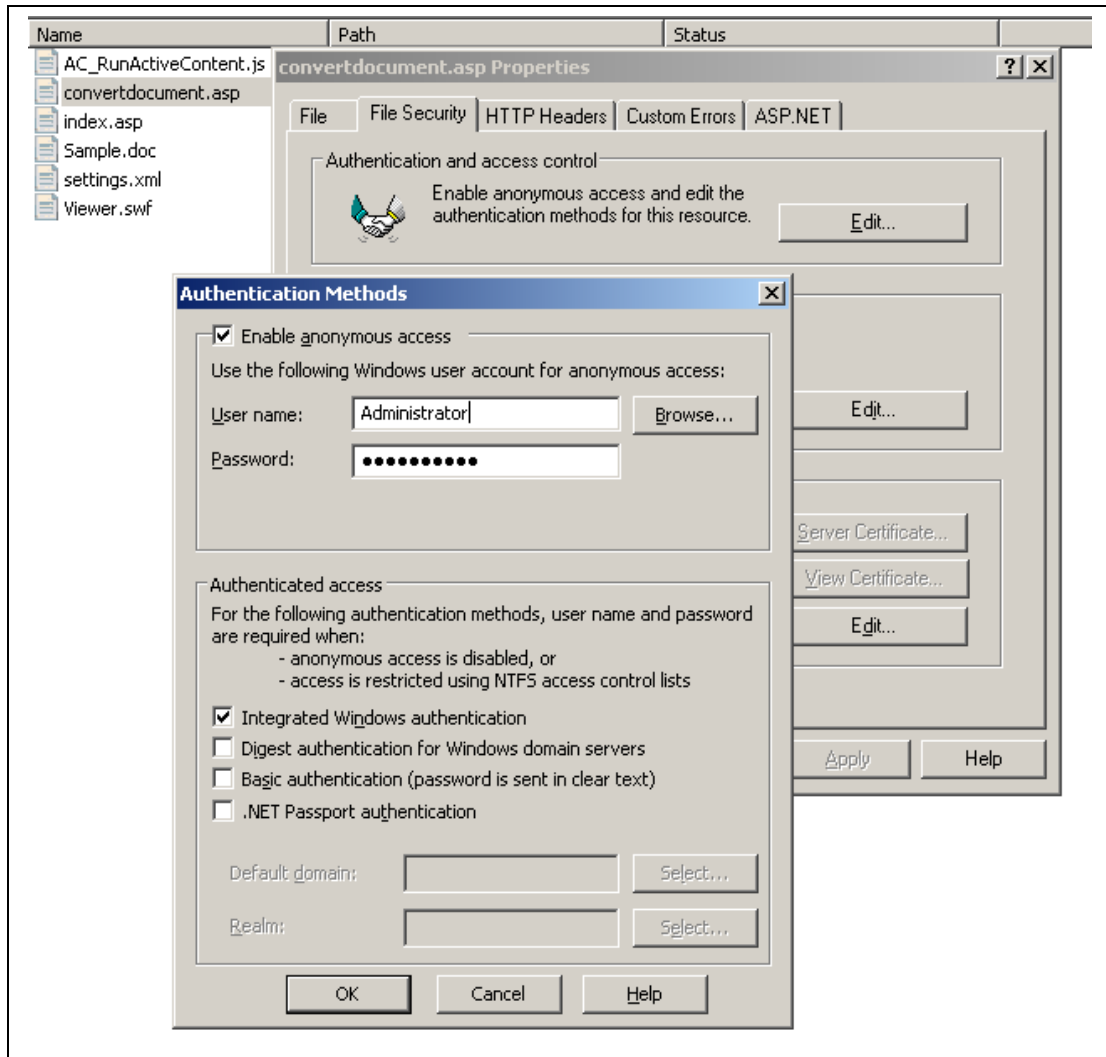
Or go to C:\Prizm\logs directory and open proxyserver.log file. You should see the following text toward the end:

```
=====
INFO | jvm 1 | 2009/03/19 16:49:11 |
INFO | jvm 1 | 2009/03/19 16:49:11 | Convert2SWF Proxy Daemon Started
INFO | jvm 1 | 2009/03/19 16:49:11 |
INFO | jvm 1 | 2009/03/19 16:49:11 |
=====
```

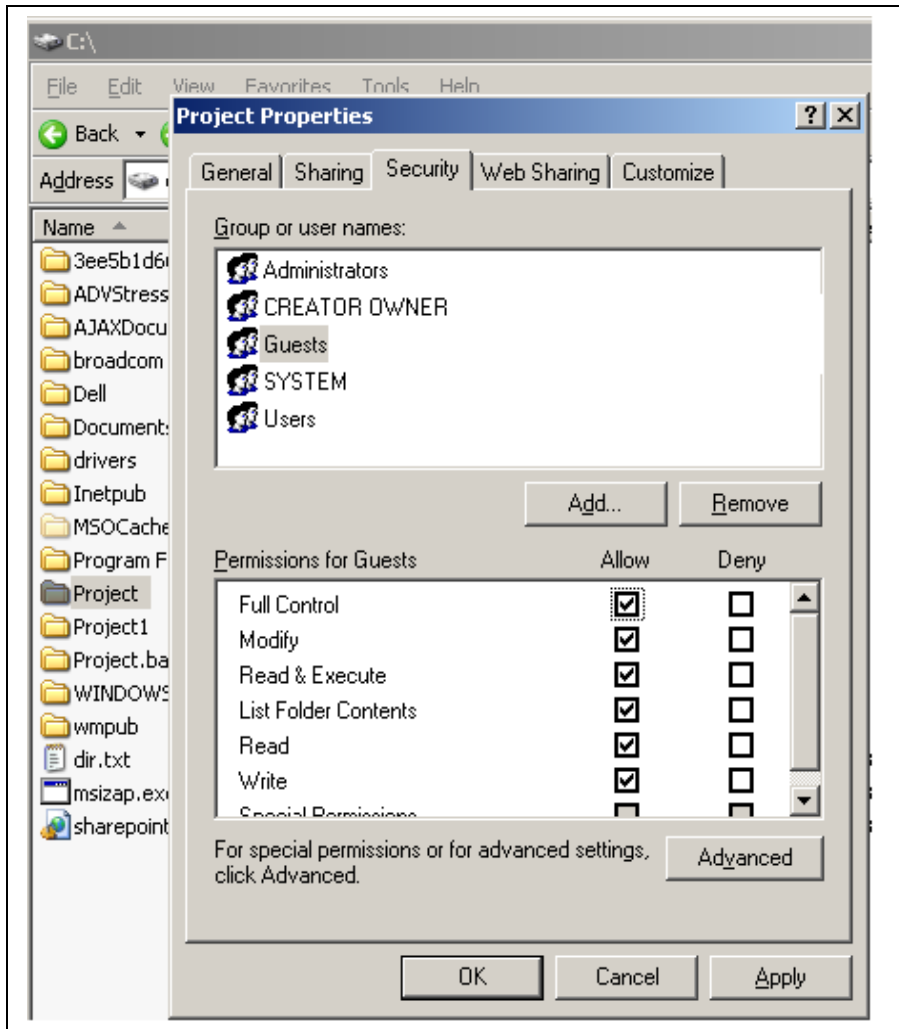
If Convert2SWF Proxy service is not fully started, go to Services from Control Panel and right click on Prizm service to go to Properties. Click on Log On under Properties. By default the service runs under Network Service account. If the service is not starting under this account, change to the Administrator user account of the machine and start the service.



- b) Make sure that convertdocument.asp or convertdocument.aspx has Administrator user account privileges in IIS.



- c) Make sure that the tempcache directory (C:\tempcache) has write permissions to users and IIS User.



- d) Ensure your settings.xml has the correct name of the convertdocument.asp or convertdocument.aspx.
- e) Make sure convert.aspx file is not returning anything except the binary of the generated .swf file from C:\tempcache

Enabling Annotations

Prerequisites

Implementing annotations capabilities within the Viewer requires Prizm Content Connect Plus to be fully installed, configured and in working state.

Installation

Installing the annotations tools is easy following two simple steps:

- Add the ViewerEnterpriseAnnotation.swf file into your Prizm Content Connect Plus code directory
- Update settingsenterprise.xml and corresponding server side rendering pages
- Create list, save and open markup pages
- Refer to the sample code provided for annotations

Chapter 7

Distributed Configuration Set Up

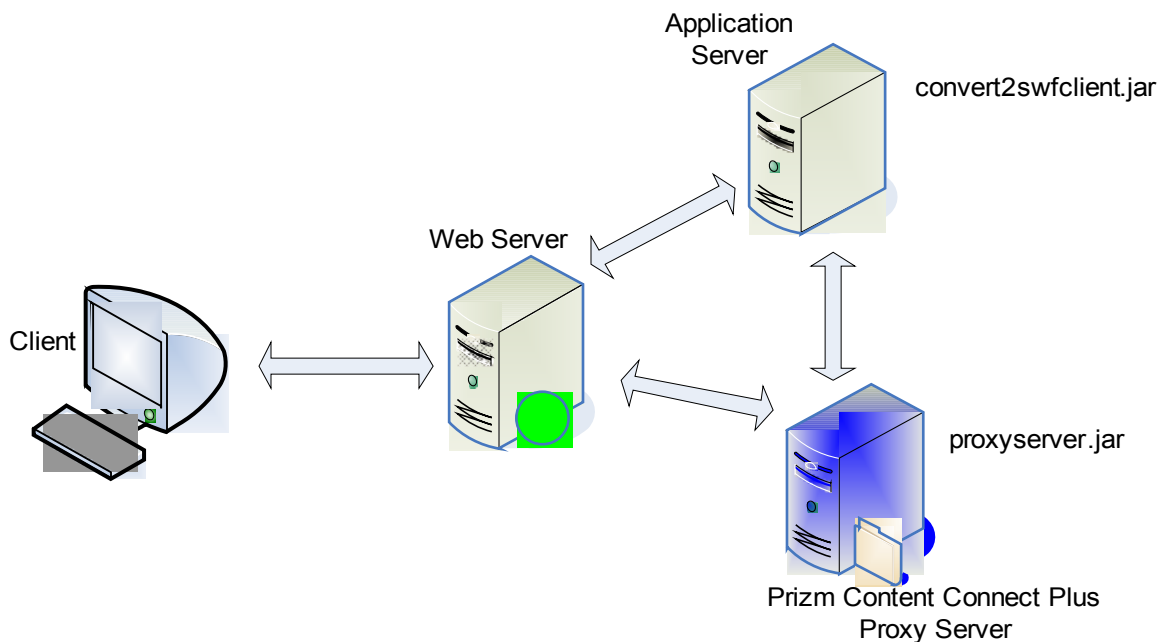
Prizm Content Connect can be configured in a distributed environment set up to achieve higher conversion rates.

Steps to set up Prizm Content Connect in Distributed mode:

- 1) Install Prizm Content Connect on proxy server. Stop the Prizm Services
- 2) Open /conf directory and then proxyserver /confi file.
Replace all occurrences of "localhost" with ip address of the server
- 3) **Go to Services** -> Prizm -> Logon and change the Logon as user to an account which is a network admin/user account which has access of both server on which Prizm Content Connect and network file server (or server on which source files are stored) will be located.
- 4) Start the Prizm Services

You can now access the conversion service from other server like this

<http://<ipaddress>:18680/convert2swf>



Distributed Configuration