

# **Prizm Content Connect Plus Developer Guide for Linux**

**Version 5.0**

Published Feb 2012

Accusoft believes the information in this publication is accurate as of its publication date. The information is subject to change without notice.

THE INFORMATION IN THIS PUBLICATION IS PROVIDED AS IS. WE MAKES NO REPRESENTATIONS OR WARRANTIES OF ANY KIND WITH RESPECT TO THE INFORMATION IN THIS PUBLICATION, AND SPECIFICALLY DISCLAIMS IMPLIED WARRANTIES OF MERCHANTABILITY OR FITNESS FOR A PARTICULAR PURPOSE.

Use, copying, and distribution of any software described in this publication requires an applicable software license.

For the most up-to-date listing of product names, see [www.accusoft.com](http://www.accusoft.com).

All other trademarks used herein are the property of their respective owners.

# Attributions, Notices & Copyrights

---

Apache PDFBox (<http://pdfbox.apache.org/>)  
Copyright 2002-2010 The Apache Software Foundation  
Download: <http://pdfbox.apache.org/download.html>  
License: <http://www.apache.org/licenses/LICENSE-2.0>

Apache FontBox (<http://pdfbox.apache.org/>)  
Copyright 2008-2010 The Apache Software Foundation  
Download: <http://pdfbox.apache.org/download.html>  
License: <http://www.apache.org/licenses/LICENSE-2.0>

Apache JempBox (<http://pdfbox.apache.org/>)  
Copyright 2008-2010 The Apache Software Foundation  
Download: <http://pdfbox.apache.org/download.html>  
License: <http://www.apache.org/licenses/LICENSE-2.0>

Apache POI (<http://poi.apache.org/>)  
Copyright 2001-2007 The Apache Software Foundation  
Download: <http://www.apache.org/dyn/closer.cgi/poi/>  
License: <http://www.apache.org/licenses/LICENSE-2.0>

Apache Commons FileUpload (<http://commons.apache.org/fileupload/>)  
Copyright 2002-2008 The Apache Software Foundation  
Download: [http://commons.apache.org/fileupload/download\\_fileupload.cgi](http://commons.apache.org/fileupload/download_fileupload.cgi)  
License: <http://www.apache.org/licenses/LICENSE-2.0>

Apache Commons IO (<http://commons.apache.org/io/>)  
Copyright 2001-2008 The Apache Software Foundation  
Download: [http://commons.apache.org/io/download\\_io.cgi](http://commons.apache.org/io/download_io.cgi)  
License: <http://www.apache.org/licenses/LICENSE-2.0>

Apache Commons Lang (<http://commons.apache.org/lang/>)  
Copyright 2001-2010 The Apache Software Foundation  
Download: [http://commons.apache.org/lang/download\\_lang.cgi](http://commons.apache.org/lang/download_lang.cgi)  
License: <http://www.apache.org/licenses/LICENSE-2.0>

Apache Commons Logging (<http://commons.apache.org/logging/>)  
Copyright 2003-2007 The Apache Software Foundation  
Download: [http://commons.apache.org/logging/download\\_logging.cgi](http://commons.apache.org/logging/download_logging.cgi)  
License: <http://www.apache.org/licenses/LICENSE-2.0>

Java Advanced Imaging API (<http://java.sun.com/javase/technologies/desktop/media/jai/>)  
Copyright (c) 2006 Sun Microsystems, Inc., 4150 Network Circle, Santa Clara, California 95054, U.S.A. All rights reserved.  
Download: [http://download.java.net/media/jai/builds/release/1\\_1\\_3/](http://download.java.net/media/jai/builds/release/1_1_3/)  
License: [http://download.java.net/media/jai/builds/release/1\\_1\\_3/LICENSE-jai.txt](http://download.java.net/media/jai/builds/release/1_1_3/LICENSE-jai.txt)

Java Advanced Imaging Image I/O Tools  
(<http://java.sun.com/javase/technologies/desktop/media/>)  
Copyright (c) 2006 Sun Microsystems, Inc., 4150 Network Circle, Santa Clara, California 95054, U.S.A. All rights reserved.  
Download: <http://download.java.net/media/jai-imageio/builds/release/1.1/>

License: [http://download.java.net/media/jai-imageio/builds/release/1.1/LICENSE-jai\\_imageio.txt](http://download.java.net/media/jai-imageio/builds/release/1.1/LICENSE-jai_imageio.txt)

JavaMail 1.4.3 (<http://www.oracle.com/technetwork/java/javamail/index.html>)  
Copyright © 2009 Sun Microsystems, Inc., 4150 Network Circle, Santa Clara, California 95054, U.S.A. All rights reserved.

Download: <http://www.oracle.com/technetwork/java/javamail/index-138643.html>  
License: [http://download.oracle.com/otn-pub/java/licenses/javamail-1.4.3-oth-JPR\\_license\\_1.html](http://download.oracle.com/otn-pub/java/licenses/javamail-1.4.3-oth-JPR_license_1.html)

#### JDOM

This product includes software developed by the JDOM Project (<http://www.jdom.org/>).  
Copyright (C) 2000-2004 Jason Hunter & Brett McLaughlin. All rights reserved.  
Source: <http://www.jdom.org/downloads/source.html>  
Download: <http://www.jdom.org/downloads/index.html>  
License: <install path>/Convert2swf/licenses/jdom/LICENSE.txt  
(<http://www.jdom.org/docs/faq.html#a0030>)

JRE 1.6.0.26 (<http://www.oracle.com/technetwork/java/javase/downloads/index.html>)  
Copyright © 2006, 2011, Oracle and/or its affiliates. All rights reserved.  
Download: <http://www.oracle.com/technetwork/java/javasebusiness/downloads/java-archive-downloads-javase6-419409.html#jre-6u26-oth-JPR>  
License: <http://www.oracle.com/technetwork/java/javase/terms/license/index.html>

ODF Converter (<http://katana.ooninja.com/w/odf-converter-integrator>)  
Copyright (c) 2006, Clever Age. All rights reserved.  
Download: <http://katana.ooninja.com/f/software/odf-converter-integrator-0.2.3-1.i386.rpm>  
License: BSD-like license (<install path>/licenses/OdfConverter/license.txt)  
Implementation/Integration: This open source product has not been recompiled and a call to binary file (OdfConverter) is directly made from the code, keeping the binaries totally separate from the Prizm Source Code.

OpenOffice.org Portable ([http://portableapps.com/apps/office/openoffice\\_portable](http://portableapps.com/apps/office/openoffice_portable))  
Copyright 2002,2008 Sun Microsystems, Inc.  
Download:

[http://sourceforge.net/projects/portableapps/files/OpenOffice.org%20Portable/OpenOffice.org%20Portable%203.0/OpenOffice.org\\_Portable\\_3.0\\_en-us.paf.exe/download](http://sourceforge.net/projects/portableapps/files/OpenOffice.org%20Portable/OpenOffice.org%20Portable%203.0/OpenOffice.org_Portable_3.0_en-us.paf.exe/download)  
License (LGPL v3): <install directory>/licenses/OpenOfficePortable/license.txt  
Implementation/Integration: This open source product has not been recompiled and a call to binary file is directly made from the code, keeping the binaries totally separate from the Prizm Source Code.

String Search (<http://johannburkard.de/software/stringsearch/>)  
StringSearch - high-performance pattern matching algorithms in Java  
Copyright (c) 2003-2010 Johann Burkard  
Download: <http://johannburkard.de/software/stringsearch/>  
License: <http://johannburkard.de/software/stringsearch/copying.txt>

The Legion of the Bouncy Castle  
Copyright (c) 2000-2009 The Legion Of The Bouncy Castle (<http://www.bouncycastle.org>)  
Download: [http://bouncycastle.org/latest\\_releases.html](http://bouncycastle.org/latest_releases.html)  
License: <http://www.bouncycastle.org/licence.html>

JTNEF (<http://www.freeutils.net/source/jtnef/>)

The JTNEF package used in this product is copyright (c) 2003-2010 by Amichai Rothman.

JavaBeans Activation Framework

(<http://www.oracle.com/technetwork/java/javase/downloads/index-135046.html>)

Download: <http://www.oracle.com/technetwork/java/javasebusiness/downloads/java-archive-downloads-java-plat-419418.html#jaf-1.1-fr-oth-JPR>

License: [http://download.oracle.com/otn-pub/java/licenses/jaf-1.1-mrel-spec-oth-JPR\\_license\\_1.html](http://download.oracle.com/otn-pub/java/licenses/jaf-1.1-mrel-spec-oth-JPR_license_1.html)

SWF Tools (<http://www.swftools.org>)

Source: <install path>/src/SWFTools/0.9.0/

Source: <install path>/src/SWFTools/0.9.1/

License (GPL v2): <install path>/Convert2swf/licenses/SWF Tools/COPYING

Implementation/Integration: This open source product has not been recompiled and a call to binary file is directly made from the code, keeping the binaries totally separate from the Prizm Source Code.

Tanuki Java Service Wrapper (<http://www.tanukisoftware.com>)

Copyright (C) 1999, 2010 Tanuki Software, Ltd. All rights reserved.

The Software Program includes software and documentation components developed in part by Silver Egg Technology, Inc. ("SET") prior to 2001 and released under the following license.

Copyright (c) 2001 Silver Egg Technology

Permission is hereby granted, free of charge, to any person obtaining a copy of this software and associated documentation files (the "Software"), to deal in the Software without restriction, including without limitation the rights to use, copy, modify, merge, publish, distribute, sub-license, and/or sell copies of the Software, and to permit persons to whom the Software is furnished to do so, subject to the following conditions:

The above copyright notice and this permission notice shall be included in all copies or substantial portions of the Software.

The Linux Server component of the Program also uses the following software, installed separately:

ImageMagick (<http://www.imagemagick.org>)

OpenOffice.org (<http://www.openoffice.org/>)

GraphicsUtil (<http://www.dncompute.com/blog/2008/07/17/graphicsutil-a-utility-class-for-drawing-arrows.html>)

Copyright (c) 2008 Noel Billig ([www.dncompute.com](http://www.dncompute.com))

Download: <http://www.dncompute.com/blog/2008/07/17/graphicsutil-a-utility-class-for-drawing-arrows.html>

License: MIT (in source)

URL Validator (<http://ctrloptcmd.com/archives/587/actionsript-3-url-validator-class/>)

Copyright 2009 Martin Jacobsen

Download: <http://ctrloptcmd.com/as3/URLValidator.as>

License: (in source)

jQuery (<http://jquery.org/>)

Copyright (c) 2011 John Resig

Download: [http://docs.jquery.com/Downloading\\_jQuery](http://docs.jquery.com/Downloading_jQuery)

License: <http://jquery.org/license/>

Lazy Load - jQuery plugin for lazy loading images (<http://www.appelsiini.net/projects/lazyload>)

Copyright (c) 2007-2009 Mika Tuupola

Download: <http://www.appelsiini.net/projects/lazyload>  
License: <http://www.opensource.org/licenses/mit-license.php>

jQuery.ScrollTo (<http://plugins.jquery.com/project/ScrollTo>)  
Copyright (c) 2007-2009 Ariel Flesler  
Download: <http://plugins.jquery.com/node/635/release>  
License: MIT (in source)

ScrollView - jQuery plugin (<http://code.google.com/p/jquery-scrollview/>)  
Copyright (c) 2009 Toshimitsu Takahashi  
Download: <http://code.google.com/p/jquery-scrollview/downloads/detail?name=jquery.scrollview.js&can=2&q=>  
License: <http://www.opensource.org/licenses/mit-license.php>

Viewport - jQuery selectors for finding elements in viewport  
(<http://www.appelsiini.net/projects/viewport>)  
Copyright (c) 2008-2009 Mika Tuupola  
Download: <http://www.appelsiini.net/projects/viewport>  
License: <http://www.opensource.org/licenses/mit-license.php>

transform: A jQuery cssHooks adding cross-browser 2d transform capabilities to \$.fn.css() and \$.fn.animate()

(<https://github.com/louisremi/jquery.transform.js>)  
Copyright 2011 @louis\_remi  
Download: <https://github.com/louisremi/jquery.transform.js>  
License: MIT (<https://github.com/louisremi/jquery.transform.js>)

jQuery UI (<http://jqueryui.com/>)  
Copyright (c) 2011 Paul Bakaus  
Download: <http://jqueryui.com/download>  
License: <http://jquery-ui.googlecode.com/svn/tags/latest/MIT-LICENSE.txt>

jquery.waitforimages (<http://alexanderdickson.com/blog/2011/02/a-new-jquery-plugin-2/>)  
Copyright (c) 2011 Alex Dickson  
Download: <https://github.com/alexanderdickson/waitForImages>  
License: <https://github.com/alexanderdickson/waitForImages/blob/master/README.md>

jQuery Context Menu Plugin (<http://abeautifulsite.net/blog/2008/09/jquery-context-menu-plugin/>)  
Copyright A Beautiful Site, LLC  
Download: <http://abeautifulsite.net/blog/2008/09/jquery-context-menu-plugin/>  
License: MIT (in source)

jqprint (<http://plugins.jquery.com/project/jqPrint>)  
Provided by Eros Fratini - [eros@recoding.it](mailto:eros@recoding.it)  
Download: <http://plugins.jquery.com/node/8069/release>  
License: <http://www.opensource.org/licenses/mit-license.php>

jQuery Patch (<http://www.zachstronaut.com/posts/2009/08/07/jquery-animate-css-rotate-scale.html>)  
2009-2010 Zachary Johnson [www.zachstronaut.com](http://www.zachstronaut.com)  
Download: <https://github.com/zachstronaut/jquery-animate-css-rotate-scale/>  
License: MIT (<https://github.com/zachstronaut/jquery-animate-css-rotate-scale/blob/master/README>)

Google Translate API for .NET (<http://code.google.com/p/google-api-for-dotnet/>)  
Copyright (c) 2008-2009 iron9light

Download: <http://code.google.com/p/google-api-for-dotnet/downloads/list>

License: <http://www.opensource.org/licenses/mit-license.php>

Other Terms: <http://code.google.com/apis/language/translate/terms.html>

SWFObject (<http://code.google.com/p/swfobject/>)

Provided by [code.google.com](http://code.google.com)

Download: <http://code.google.com/p/swfobject/downloads/list>

License: <http://www.opensource.org/licenses/mit-license.php>

# Preface

---

This document describes how to integrate and use Prizm Content Connect Plus with your application.

## Intended Audience

The audience of this manual is intended to be developers who are familiar with Java, Java Script, & overall Linux OS.

## Revision History

The following changes have been made to this document.

---

<b>Revision History</b>	<b>Revision Date</b>	<b>Description</b>
Oct 11		Draft for version 4.6.3
Feb 12		Draft for version 5.0

# Table of Contents

---

<b>INTENDED AUDIENCE.....</b>	<b>8</b>
<b>REVISION HISTORY.....</b>	<b>8</b>
<b>TABLE OF CONTENTS.....</b>	<b>9</b>
<b>CHAPTER 1.....</b>	<b>11</b>
<b>HOW DOES THE VIEWER WORK?.....</b>	<b>11</b>
<b>CHAPTER 2.....</b>	<b>13</b>
<b>COMPONENTS &amp; COMMAND LINE SYNTAX.....</b>	<b>13</b>
CONVERT2SWFCLIENT.JAR.....	13
PROXYSERVER.JAR - PRIZM PROXY SERVICE.....	16
STARTING THE PROXY SERVER.....	16
VIEWERENTERPRISE.SWF.....	17
<b>CHAPTER 3.....</b>	<b>18</b>
<b>DOCUMENT CONVERSION PROXYWEBSERVICE.....</b>	<b>18</b>
SETUP PROXY SERVICE ON PORT OTHER THAN 18680.....	20
<b>CHAPTER 4.....</b>	<b>23</b>
<b>INTEGRATION WITH YOUR APPLICATION.....</b>	<b>23</b>
<b>CHAPTER 5.....</b>	<b>24</b>
<b>CUSTOMIZING THE VIEWER.....</b>	<b>24</b>
.....	24
<b>CHAPTER 6.....</b>	<b>28</b>
<b>EVENTS TO/FROM VIEWER.....</b>	<b>28</b>
<b>CHAPTER 7.....</b>	<b>32</b>
<b>TRANSLATIONS.....</b>	<b>32</b>
<b>CHAPTER 8.....</b>	<b>38</b>
<b>LOCALIZING THE VIEWER.....</b>	<b>38</b>
<b>CHAPTER 9.....</b>	<b>41</b>
<b>GENERATING THUMBNAILS.....</b>	<b>41</b>
<b>CHAPTER 10.....</b>	<b>42</b>
<b>GENERATING IMAGES.....</b>	<b>42</b>
.....	42
<b>CHAPTER 11.....</b>	<b>44</b>
<b>EXTRACTING TEXT.....</b>	<b>44</b>
<b>CHAPTER 12.....</b>	<b>45</b>
<b>CLIENT SIDE FLASH DETECTION.....</b>	<b>45</b>
<b>CHAPTER 13.....</b>	<b>46</b>

<b>ERROR CODES &amp; EXCEPTION HANDLING</b> .....	<b>46</b>
<b>RESPONSE.STATUSCODE = 500;</b> .....	<b>47</b>
<b>CHAPTER 14</b> .....	<b>48</b>
<b>FINE TUNING THE VIEWER</b> .....	<b>48</b>
<b>CHAPTER 15</b> .....	<b>51</b>
<b>DISTRIBUTED CONFIGURATION SET UP</b> .....	<b>51</b>
.....	51

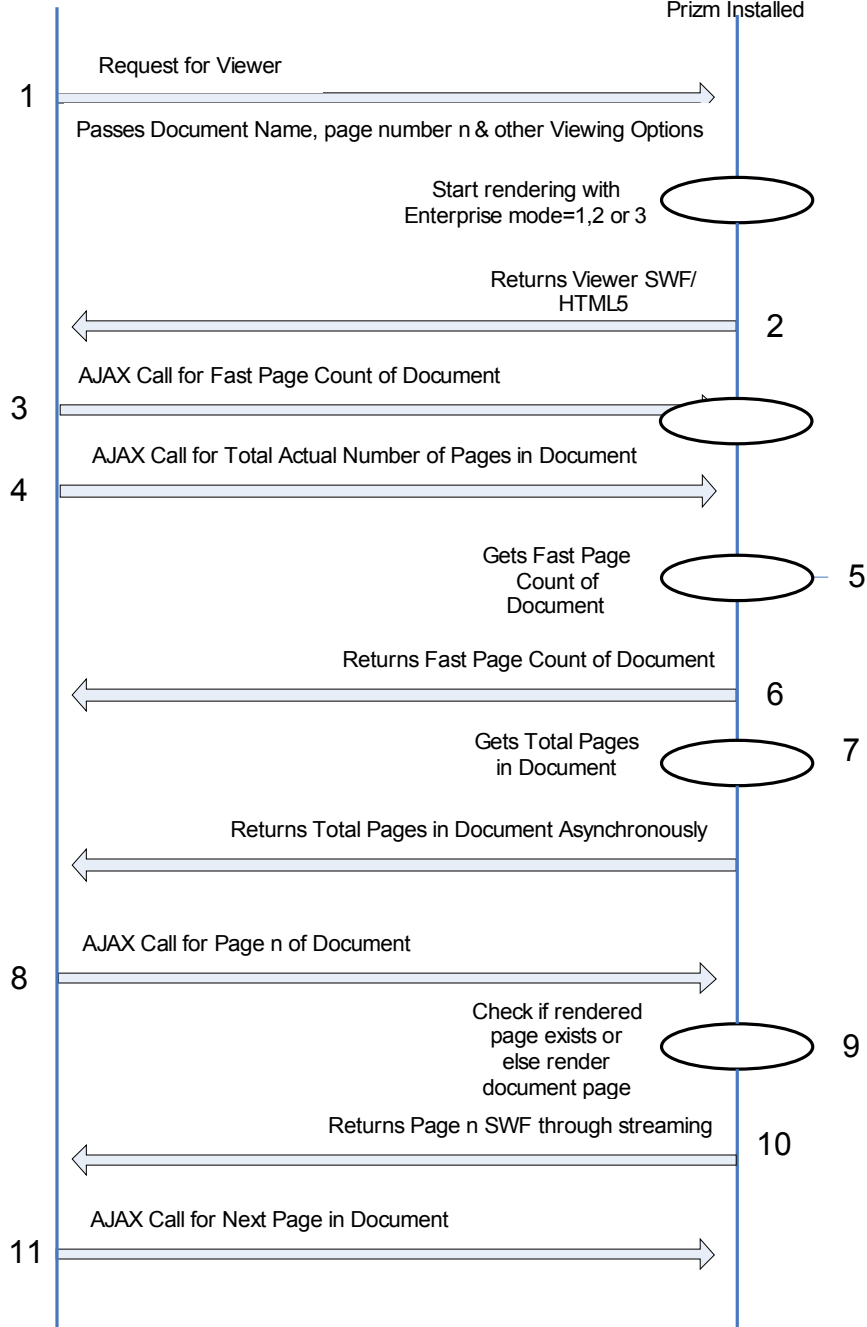
## How Does the Viewer Work?

Prizm Content Connect uses a combination of Flex, Flash & AJAX technology to render the documents. Here are steps which show in detail how the viewer works:

- Step 1** – A request is sent from client browser for a document, including start page and document viewing options
- Step 2** – Server returns a swf file
- Step 3** – Viewer loads on client side and makes an AJAX call for Fast Page Count
- Step 4** – Viewer makes an AJAX call for Actual Total Page Count
- Step 5** – Fast Page Count of document is calculated on server
- Step 6** – Server returns Fast Page Count of Document
- Step 7** – Total Page Count of document is calculated on server and returned asynchronously. (Fast Page is calculated synchronously to reach step 8 quickly, and actual page count is returned asynchronously)
- Step 8** – Viewer makes an AJAX call for page n of the document
- Step 9**– Conversion File on the server gets the document name and page number and converts page n in the document to swf file
- Step 10** – Conversion File returns the generated swf file in a stream for viewer to display
- Step 11** – Viewer makes an AJAX call for the next page of the document

Client Browser  
Flash/HTML5  
UI Frontend

Web Server  
Web server with App  
Server, File server and  
Prizm Installed



### Components & Command Line Syntax

Prizm installs various components & utilities which work together to do the conversion. Here are some of the main components and & files which perform specific functions

Components/Utilities	Description	Location
<b>convert2swf.jar</b>	Performs actual conversion of documents	Installation Directory <installpath>
<b>convert2swfclient.jar</b>	Makes a call to convert2swf.jar for conversion. Can be on a different machine in 3 tier installation mode	Installation Directory <installpath>
<b>proxyserver.jar</b>	Proxy Server which manages conversion and performs load balancing	<installpath>\bin
<b>convert2swf_proxy.properties</b>	Properties file required by Proxy Server proxyserver.jar	<installpath>\conf
<b>jrunner.properties</b>	Properties file required by utility jrunner  jrunner-linux-x86-32.properties for 32 bit Linux OS jrunner-linux-x86-64.properties for 64 bit Linux OS	<installpath>\conf
<b>proxyserver.log</b>	Log file generated by Proxy Server proxyserver.jar	<installpath>\logs
<b>Service Start Up/Install Scripts</b>	Scripts which call jrunner and are provided for easier start/stop of Prizm Proxy Service	<installpath>/scripts
<b>ViewerEnterprise.swf</b>	Viewer file which contains viewer logic and makes AJAX calls to other files	<installpath> or <installpath>\SampleCode
<b>settingsenterprise.xml</b>	Settings file used by ViewerEnterprise.swf and contains conversion file name	<installpath> or <installpath>\SampleCode

#### ***convert2swfclient.jar***

Note- convert2swf.jar is deprecated and remains for backwards compatibility only. For new installations, always use convert2swfclient.jar.

convert2swfclient.jar is a Java-based Jar file that provides methods to convert your documents to swf format to be used by the Viewer file. This jar file can only be run if Proxy Server is running.

To run this utility simply type *java -jar convert2swfclient.jar*. Recommended way is to always call *convert2swfclient.jar*

**Usage:** `java -jar convert2swfclient.jar argument1=value1 argument2=value2 ...`

**Argument list:**

ooserver	OpenOffice.org server hostname:port
proxyserver	Convert2SWF Proxy server hostname:port
source	source file path
target	target directory or target file path if target is empty, the result is saved to the source directory
log	log file path, if not specified all logging goes to a terminal
pages	indicates the range of pages to be printed, semicolon separated ex.: to print all pages, beginning from 2nd: 2- to print 1st, 3rd, and 5th page: 1;3;5 to print first 10 pages: 1-10 to print 1st, 2nd and a range from 10 to 20: 1;2;10-20 to print 2nd, and the rest from 10th: 2;10
openpass	password that allows the user to open the PDF file, enclose the value in double-quotes if you want to use space(s) ex.: openpass=hj1uLWI openpass="Best Converter 2 PDF and PNG"
optimize	specifies the optimization level (0, 1, 2)
embedfonts	embeds fonts in png for a better search in png (Default No:0) (Values= 0 or 1)
ignoreswferrors	forces swf conversion (Default No: 0) (Values= 0 or 1)
totalpages	returns the number of the pages in document (returns accurate total number of pages but requires more processing time)
fastpgcnt	returns the number of pages in the document (faster but less accurate - use totalpages for actual page count)
pagesize	Used when converting tiff image, possible values: a4 - resize the result pages to A4 (210 x 297 mm) (default) letter - resize the result pages to Letter (8,5 x 11") original - keep the original size of the pages
modulesdir	directory to be used for modules and interprocess communication (by default this directory exists in the installation directory)
pagetype	used when converting multi-page tiff images, possible values: a4 - resize the result pages to A4 (210 x 297 mm) letter - resize the result pages to Letter (8,5 x 11") original (default) - keep the original size of the pages
pdfdensity	used when converting encrypted pdf documents (Default: 100)
fidelity	the factor which will make docx, xlsx and pptx documents appear exactly same as original; setting fidelity as 'high' means more time spent for conversion (default: high)
convtimeout	maximum time to wait for the conversion to be done (in seconds)(used for large files). Use 0 to wait for infinite time, default: 660 seconds
linktoward	use 1 to open the hyperlink in the same window
linktarget	sets the target window name of a hyperlink
linkcolor	sets the color of a hyperlink button (format: RRGGBBTT), where: RRGGBB = the color in HTML notation. TT = color transparency value (00-FF)
linkdisable	use 1 to disable hyperlinks
flashver	sets the flash version of the converted .swf (Default: 9) (Viewer

	supports 9+)
wtmtext	watermark text. Adds watermark on each page (Note – Watermark feature requires full license key. It does not work with trial evaluation key)
wtmfont	watermark font, default: Helvetica
wtmsize	watermark size, default: 130
wtmalpha	watermark opacity (1-100), default: 10
thumbnail	specifies thumbnail image width and height, e.g.: 150x200. Only used for creating thumbnails in png format of document pages
customerid	customer id used for licensing and activation
regkey	registration key used for licensing and activation
monochrome	create grayscale TIFF images (monochrome= 1)
getattachments	get attachment list for msg formats (getattachments= 1)
extractattachments	extract attachments from msg formats (extractattachments= 1)
xlsfidelity	suppress the XLS pre-processing of one page per sheet. (Default: High) (Values: low/high)
showFullscreenNotice	Allows the fullscreen keyboard events notice to not be displayed if set to No. (Default=Yes)
suppressSaveAnnotationNotice	Allows Annotation Saved notice to not be displayed when set to Yes. (Default=No)
srcencoding	specifies the text import filter parameters for text files. (only for .txt and .text files) For Korean files srcencoding would be: srcencoding=EUC_KR,CRLF,Times New Roman,ko-KR where: EUC_KR is the encoding, complete list is here: <a href="http://docs.python.org/release/2.4.2/lib/standard-encodings.html">http://docs.python.org/release/2.4.2/lib/standard-encodings.html</a> CRLF is the line ending character (either: CR, LF, CRLF) Times New Roman is the default font used ko-KR is the language encoding
dpi	specifies depth per index ratio of output png and image files Default:100

**Example 1:**

To convert sample.doc to sample.swf having Proxy Server running on 18580:  
java -jar convert2swfclient.jar source=sample.doc

**Example 2:**

To convert page 1 only of sample.doc to sample.swf:  
java -jar convert2swfclient.jar pages=1 source=sample.doc

**Example 3:**

To convert pages 1,5,7 only of sample.doc to sample.swf having Proxy Server running on 18580:  
java -jar convert2swfclient.jar pages=1,5,7 source=sample.doc

**Example 4:**

To get total pages in sample.doc:  
java -jar convert2swfclient.jar totalpages source=/usr/local/temp/sample.doc

**Example 5:**

To get fast page count in sample.doc:  
java -jar convert2swfclient.jar source=sample.doc

fastpgcnt – gets total pages in the document quickly but might not always be as accurate as totalpages

**Example 6:** (Note – Watermark feature requires full license key.)

To convert sample.doc to sample.swf and add watermark "Confidential":

```
java -jar convert2swfclient.jar source=sample.doc wtmtext=Confidential wtmfont= Helvetica  
wtmsize=100 wtalpha=10
```

**Example 7:**

To create a thumbnail of page 1 of sample.doc:

```
java -jar convert2swfclient.jar source=sample.doc thumbnail=100x100 pages=1
```

**Example 8:**

To create a thumbnail of all pages of sample.doc:

```
java -jar convert2swfclient.jar source=sample.doc thumbnail=100x100
```

**Example 9:**

To create a thumbnail of page 6 of sample.doc, specify target location, and add watermark "Approved" on each thumbnail:

```
java -jar convert2swfclient.jar source=/usr/local/temp/sample.doc target=/usr/local/temp/  
thumbnail=100x100 wtmtext=Approved wtmfont=Helvetica wtmsize=50 wtalpha=70
```

**Note:** If the registration information is not valid or empty, the library runs in demo mode. Some features are limited.

**Note:** For unregistered products or in trial mode, the Convert2SWF runs in trial mode and produces a DEMO watermark on converted documents.

## ***proxyserver.jar - Prizm Proxy Service***

Prizm proxy service is required for convert2swf utility to run. This service is installed and started during the installation process.

**convert2swf\_proxy.properties** contains the parameters and port information needed for Prizm Proxy Service to run and is located in <installpath>/conf directory.

### ***Starting the Proxy Server***

Start the server using the following command

```
./<install>/scripts/proxyserver.sh start
```

You can also stop and check status of proxyserver using following commands

```
./<install>/scripts/proxyserver.sh stop
```

```
./<install>/scripts/proxyserver.sh status
```

To see the log files, check:

```
<install>/logs/proxyserver.log
```

You can also run proxyserver in a console

- run  
<install>/scripts/proxyserver.sh console  
to run the proxyserver in a console mode.

## ***ViewerEnterprise.swf***

ViewerEnterprise.swf is the Prizm Content Connect Plus navigation and viewer file containing the UI code. ViewerEnterprise.swf basically acts as a wrapper viewing file and makes AJAX calls to get the document pages in swf format. This file is used with convert2swf utility to produce the resulting swf file with the navigation UI.

## ***settingsenterprise.xml***

settingsenterprise.xml file contains parameters used by the viewer. Updated the various parameters based on your installation and machine configuration.

<b>Parameter</b>	<b>Value</b>
tempLocationURL	Webserver Link for above tempLocation
conversionFileURL	Exact url of the file which will take care of ajax calls and perform the conversion
getTotalPagesURL	Exact url of the file which will return total pages of the document
getFastPagesURL	Exact url of the file which will return fast page count of the document

### **Example - settingsenterprise.xml file**

```
<settings>  
<conversionFileURL>http://yourdomain/samplecode-enterprise/convertdocument.php</conversionFileURL>  
<getTotalPagesURL>http://yourdomain/samplecode-  
enterprise/gettotalpagecount.php</getTotalPagesURL>  
<getFastPagesURL>http://yourdomain/samplecode-enterprise/getfastpagecount.php</getFastPagesURL>  
</settings>
```

## Chapter 3

### Document Conversion ProxyWebservice

Prizm has a built in HTTP & HTTPS WebServer which serves the document conversion requests and does load balancing and various other tasks.

By default, after complete installation you can check if the Prizm HTTP WebServer is running by typing in browser

<http://localhost:18680/convert2swf>

convert2swf Webservice by default is setup to run on port 18680 and in http mode.

#### Usage:

ooserver	OpenOffice.org server hostname:port
proxyserver	Convert2SWF Proxy server hostname:port
source	source file path
target	target directory or target file path if target is empty, the result is saved to the source directory
log	log file path, if not specified all logging goes to a terminal
pages	indicates the range of pages to be printed, semicolon separated ex.: to print all pages, beginning from 2nd: 2- to print 1st, 3rd, and 5th page: 1;3;5 to print first 10 pages: 1-10 to print 1st, 2nd and a range from 10 to 20: 1;2;10-20 to print 2nd, and the rest from 10th: 2;10
openpass	password that allows the user to open the PDF file, enclose the value in double-quotes if you want to use space(s) ex.: openpass=hj1uLWI openpass="Best Converter 2 PDF and PNG"
optimize	specifies the optimization level (0, 1, 2)
embedfonts	embeds fonts in png for a better search in png (Default No:0) (Values= 0 or 1)
ignoreswfferrors	forces swf conversion (Default No: 0) (Values= 0 or 1)
totalpages	returns the number of the pages in document (returns accurate total number of pages but requires more processing time)
fastpgcnt	returns the number of pages in the document (faster but less accurate - use totalpages for actual page count)
pagesize	Used when converting tiff image, possible values: a4 - resize the result pages to A4 (210 x 297 mm) (default) letter - resize the result pages to Letter (8,5 x 11") original - keep the original size of the pages
modulesdir	directory to be used for modules and interprocess communication (by default this directory exists in the installation directory)
pagetype	used when converting multi-page tiff images, possible values: a4 - resize the result pages to A4 (210 x 297 mm) letter - resize the result pages to Letter (8,5 x 11")

	original (default) - keep the original size of the pages
pdfdensity	used when converting encrypted pdf documents (Default: 100)
fidelity	the factor which will make docx, xlsx and pptx documents appear exactly same as original; setting fidelity as 'high' means more time spent for conversion (default: high)
convtimeout	maximum time to wait for the conversion to be done (in seconds)(used for large files). Use 0 to wait for infinite time, default: 660 seconds
linktownd	use 1 to open the hyperlink in the same window
linktarget	sets the target window name of a hyperlink
linkcolor	sets the color of a hyperlink button (format: RRGGBBTT), where: RRGGBB = the color in HTML notation. TT = color transparency value (00-FF)
linkdisable	use 1 to disable hyperlinks
flashver	sets the flash version of the converted .swf (Default: 9) (Viewer supports 9+)
wtmtext	watermark text. Adds watermark on each page (Note – Watermark feature requires full license key. It does not work with trial evaluation key)
wtmfont	watermark font, default: Helvetica
wtmsize	watermark size, default: 130
wtmalpha	watermark opacity (1-100), default: 10
thumbnail	specifies thumbnail image width and height, e.g.: 150x200. Only used for creating thumbnails in png format of document pages
customerid	customer id used for licensing and activation
regkey	registration key used for licensing and activation
monochrome	create grayscale TIFF images (monochrome= 1)
getattachments	get attachment list for msg formats (getattachments= 1)
extractattachments	extract attachments from msg formats (extractattachments= 1)
xlsfidelity	suppress the XLS pre-processing of one page per sheet. (Default: High) (Values: low/high)
showFullscreenNotice	Allows the fullscreen keyboard events notice to not be displayed if set to No. (Default=Yes)
suppressSaveAnnotationNotice	Allows Annotation Saved notice to not be displayed when set to Yes. (Default=No)
srcencoding	specifies the text import filter parameters for text files. (only for .txt and .text files) For Korean files srcencoding would be: srcencoding=EUC_KR,CRLF,Times New Roman,ko-KR where: EUC_KR is the encoding, complete list is here: <a href="http://docs.python.org/release/2.4.2/lib/standard-encodings.html">http://docs.python.org/release/2.4.2/lib/standard-encodings.html</a> CRLF is the line ending character (either: CR, LF, CRLF) Times New Roman is the default font used ko-KR is the language encoding
dpi	specifies depth per index ratio of output png and image files Default:100

**Example 1:**

To convert sample.doc to sample.swf:

<http://localhost:18680/convert2swf?>

[source=/var/www/html/samplecode/sample.doc&target=/var/www/html/samplecode/sample.swf](http://localhost:18680/convert2swf?source=/var/www/html/samplecode/sample.doc&target=/var/www/html/samplecode/sample.swf)

**Example 2:**

To convert page 1 only of sample.doc to sample.swf:

<http://localhost:18680/convert2swf?source=/var/www/html/samplecode/sample.doc&pages=1>

**Example 3:**

To convert pages 1,5,7 only of sample.doc to sample.swf:

<http://localhost:18680/convert2swf?source=/var/www/html/samplecode/sample.doc&target=/var/www/html/samplecode/sample.swf&pages=1,5,7>

**Example 4:**

To get total pages in sample.doc:

<http://localhost:18680/convert2swf?source=/var/www/html/samplecode/sample.doc&totalpages>

**Example 5:**

To get fast page count in sample.doc:

<http://localhost:18680/convert2swf?source=/var/www/html/samplecode/sample.doc&fastpgcnt>

fastpgcnt – gets total pages in the document quickly but might not always be as accurate as totalpages

**Example 6:**

To convert sample.doc to sample.swf with http\_port set to 1111 and SSL enabled:

<https://localhost:1111/convert2swf?source=/var/www/html/samplecode/sample.doc&pages=1>

**Example 7:** (Note – Watermark feature requires full license key.)

To convert sample.doc to sample.swf and add watermark "Confidential":

<http://localhost:18680/convert2swf?>

[source=/var/www/html/samplecode/sample.doc&wtmtext=Confidential&wtmfont=Helvetica&wtmsize=100&wtmalpha=10](http://localhost:18680/convert2swf?source=/var/www/html/samplecode/sample.doc&wtmtext=Confidential&wtmfont=Helvetica&wtmsize=100&wtmalpha=10)

**Example 8:**

To create a thumbnail of page 1 of sample.doc:

<http://localhost:18680/convert2swf?>

[source=/var/www/html/samplecode/sample.doc&thumbnail=100x100&pages=1](http://localhost:18680/convert2swf?source=/var/www/html/samplecode/sample.doc&thumbnail=100x100&pages=1)

**Example 9:**

To create a thumbnail of all pages of sample.doc:

java -jar convert2swfclient.jar source=sample.doc thumbnail=100x150

<http://localhost:18680/convert2swf?>

[source=/var/www/html/samplecode/sample.doc&thumbnail=100x150](http://localhost:18680/convert2swf?source=/var/www/html/samplecode/sample.doc&thumbnail=100x150)

**Example 10:**

To create a thumbnail of page 6 of sample.doc, specify target location, and add watermark

"Approved" on each thumbnail: <http://localhost:18680/convert2swf?>

[source=/var/www/html/samplecode/sample.doc&wtmtext=Approved&wtmfont=Helvetica&wtmsize=100&wtmalpha=10&target=/usr/local/tempcache/](http://localhost:18680/convert2swf?source=/var/www/html/samplecode/sample.doc&wtmtext=Approved&wtmfont=Helvetica&wtmsize=100&wtmalpha=10&target=/usr/local/tempcache/)

## ***Setup proxy service on port other than 18680***

Open <install\_path>/conf/proxyserverconfiguration.config and change proxy\_port

After changing the http\_port, restart the proxyserver by using following commands

```
cd <install_path>/scripts
proxyserver.sh stop
proxyserver.sh start
```

## Setup proxy service to run on SSL https

Following steps have to be done to achieve this:

1) Modify proxyserver.jar.properties

Stop proxyserver

```
cd <install_path>/scripts
```

```
proxyserver.sh stop
```

```
cd <install_path>/config
```

Open proxyserverconfiguration.config

```
set http_ssl_enabled=true
```

2) Modify web.xml (Tomcat / JBoss Application - WAR, EAR)

(Only Applicable if you are using WAR or EAR provided in Sample Code)

(Ignore this step if you are not using the provided sample code WAR or EAR)

```
<param-name>proxyserver</param-name>
```

```
<param-value>https://localhost:18680</param-value>
```

3) Start the proxyserver

```
cd <install_path>/scripts
```

```
proxyserver.sh start
```

Check logs at <install\_path>/convert2swf/logs/proxyserver.log

SSL mode is denoted in proxyserver.log at initialization phase, e.g.:

```
INFO | jvm 1 | 2009/09/10 08:00:26 | http server ssl enabled : true
INFO | jvm 1 | 2009/09/10 08:00:26 | http server ssl keystore : /var/www/cgi-
bin/convert2swf/bin/proxyserver_ssc.jks
INFO | jvm 1 | 2009/09/10 08:00:26 | http server ssl password : *****
:
INFO | jvm 1 | 2009/09/10 08:00:38 | [ info ] [https-server] starting...
INFO | jvm 1 | 2009/09/10 08:00:38 | [ info ] [https-server] adding to the pool: worker-0
INFO | jvm 1 | 2009/09/10 08:00:39 | [ info ] [https-server] binded to: ssl
socket,host=localhost,port=18680
```

and with each client request, e.g.:

```
INFO | jvm 1 | 2009/09/10 08:00:56 | [ info ] [https-server] [worker-0] handling client
request
```

### Doing Conversions in SSL Mode

Specify proxyserver parameter

Calling convert2swfclient.jar has to contain proxyserver parameter that specifies the https protocol, host and port, e.g.:

```
java -jar convert2swfclient.jar proxyserver=https://localhost:18680 source=sample.doc
```

or

When using proxyserver convert2swf service

<https://localhost:18680/convert2swf?source=/var/www/html/samplecode/sample.doc&pages=1>

### What is proxyserver\_ssc.jks?

This file is so called "keystore". It is necessary for SSL handshake phase and data encryption.

proxyserver\_ssc.jks contains self-signed certificate that is intended to be used in trusted environments (difficult to tamper), such as localhost or intranets.

To print the content of the keystore you may use following command:

```
"Java/jdk1.6.0_16/bin/keytool" -list -v -keystore  
<installpath>/convert2swf/bin/proxyserver_ssc.jks -storepass "password"
```

### Integration with Your Application

Prizm Content Connect Plus supports real time processing of documents and be integrated with your existing applications. This allows you to not only convert your documents to PDF format and allow your users to download them in PDF format but also to convert them into SWF format with an easy to use full featured viewer.

#### **ViewerEnterprise File**

Calls the ViewerEnterprise.swf and passes document location along with Viewer display properties.

#### **ViewerEnterprise.swf file**

Contains the logic for viewing the documents. ViewerEnterprise.swf makes AJAX calls to Conversion File mentioned below.

#### **settingsenterprise.xml file**

Used by ViewerEnterprise.swf and contains location for a temp directory where swf file will be generated and conversion file url.

For php sample code, settingsenterprise.xml would look like this:

```
<settings>
<conversionFileURL>getdocument.php</conversionFileURL>
<getTotalPagesURL>gettotalpagecount.php</getTotalPagesURL>
<getFastPagesURL>getfastpagecount.php</getFastPagesURL>
</settings>
```

#### **Conversion File (getdocument)**

Called from ViewerEnterprise.swf to perform the actual conversion. Conversion File is assumed by default to be on same domain as ViewerEnterprise.swf.

Conversion file accepts document as a form POST parameter and returns generated SWF file name.

**Arguments:** *fileName, pageNumber*

**Returns:** *SWFFile=generatedfile.swf*

*Or SWFFile=Error (in case of error or other problems)*

#### **GetFastPageCount**

Called from ViewerEnterprise.swf to return the page count of the file

**Arguments:** *fileName, pageNumber*

**Returns:** *pages=fasttotalpages*

#### **GetTotalPageCount**

Called from ViewerEnterprise.swf to return the actual total page count of the file

**Arguments:** *fileName, pageNumber*

**Returns:** *pages=totalpages*

## Customizing the viewer

Prizm Content Connect Plus is fully customizable and you can not only switch the various buttons on and off on the viewer, but also add up to 3 custom buttons.

Your custom code needs to appear as 'FlashVars' param variable so that it can be passed to the flash file at run time.

There are several ways to embed flash into a web page. Prizm Content Connect can support all of those methods.

Here are some of flash embed examples:

1) Basic Embed using Embed & Object Tags (using AC\_RunActiveContent.js)  
[http://kb2.adobe.com/cps/127/tn\\_12701.html](http://kb2.adobe.com/cps/127/tn_12701.html)

2) Using SWF Objects  
<http://code.google.com/p/swfobject/>

3) Using JQuery SWF Object Plugin  
<http://jquery.thewikies.com/swfobject/>

Given below is an example with code showing SWF Objects.

```
<script src="swfobject.2.2.js" language="javascript"></script>
<script type="text/javascript">
  var params = {
    wmode: 'opaque',
    scale: 'noscale',
    allowFullScreen: true,
    allowScriptAccess: 'always',
    bgcolor: '#ffffff'
  };
  var attributes = {
    id: 'ViewerEnterprise',
    name: 'ViewerEnterprise'
  };
  var flashvars = {
    documentname: '<? echo $document; ?>',
    saveDocumentLocation: 'savedocument.php'
  };
  swfobject.embedSWF("ViewerEnterprise.swf?<? echo time();?>", "documentviewer", "620", "800",
"10.0.0", false, flashvars, params, attributes);
</script>
<noscript>
  Javascript needs to be enabled to view the document in viewer.
</noscript>
<div id="documentviewer"></div>
```

### Prizm Flash Variables

Name	Description	Default	Values
------	-------------	---------	--------

		Value	
XMLSettingsURL	Pass settings xml file as flash variable		XMLSettingsURL=settingsenterprise.xml
docLoadDelay	Controls the request time between each page	100	10 + any numeric value
documentname	Name of document to be displayed	Name String Value (Required)	Any String
startPage	Page which should load when viewer opens	1 (Required)	1 to any. Cannot have value as 0 or any alphanumeric digits or negative numbers.
toolbarButtonSize	Allows to change the size of the buttons in the toolbar.	36	Any numeric value
hideToolbarCategories	Allows to turn on/off the category names in the toolbar	Yes	Yes/No
toolbar	Removes toolbar all together	Yes	Yes/No
interfaceColor	Change the toolbar color	0xff0000	Any hex code
saveDocument (Requires setting of saveDocumentLocation)	Removes the same document options from all tabs.	Yes	Yes/No
saveDocumentLocation	Works with saveButton and points to original document or any other document rendition (such as pdf)		Link to the Original Document or pdf format of Original Document Example: <a href="http://www.testsite.com/documents/originaldoc.doc">http://www.testsite.com/documents/originaldoc.doc</a>
ignoreExternalLinks	Turns off the external links on the document	No	If set to Yes, when external links are clicked, they will not be opened automatically. (Look at JavaScript events viewerOnExternalLinkClick & viewerOnInternalLinkClick for using in relation to this parameter)
copyText	Disables the option to copy text to clipboard from the viewer	Yes	Yes/No
jsFullscreen	Traps full screen button event. Disables fullscreen event of viewer. Setting jsFullscreen=Yes allows override of the fullscreen event. Set jsFullscreen=Yes and then on JS event viewerOnDocumentFullScreen (documentname) change viewer height/width to needed.	No	Yes/No
searchTab	Turns search tab on/off	Yes	Yes/No
viewTab	Turns view tab on/off	Yes	Yes/No

translationTool	Turns translation on/off	Yes	Yes/No
selectedTab	Tab to select when document first loads	Home	Name of the tab. Example: selectedTab:'Home' selectedTab:'Search' selectedTab:'खोज'  If using translation, pass the translated tab name to load it on document load.

## Home Tab Buttons

buttonHomeSave buttonHomePrint buttonHomeZoom buttonHomeFit buttonHomeLeft buttonHomeRight buttonHomeClip buttonHomeFullscreen buttonSearch buttonSearchFullScreen buttonViewFit buttonViewRotate buttonViewThumbs buttonViewFullScreen buttonTranslateFullscre	Allows you to independently turn off buttons on Home tab  Example: buttonHomeZoom=No	All buttons are on by default. Default: Yes	Yes/No
---	---	---	--------

## Print Specific Variables

Name	Details
printOptionPrintAll	Yes/No Allows you to remove Print All pages options in the print dialog box
printOptionPrintPageRange	Yes/No Allows you to remove Print Page Range option in the print dialog box
printOptionPrintCurrentPage	Yes/No Allows you to remove Print Current Page option in the print dialog box

## Custom Tab Variables

Adding custom tab with custom buttons.  
(Only 1 custom tab is allowed)  
(Upto 3 buttons on custom tab are allowed)

Name	Description
customTabName	Name of custom tab
customTabCategoryName	Category name for custom buttons. All buttons get added to 1 category
customButton1Image	Image to appear on button

customButton1Url	URL to go to when button is clicked
customButton1Target	Target for url like _blank, _top etc
customButton1Tooltip	Tooltip for the custom button

## Search Variables

Name	Description	Default Value	Values
searchQuery	Load viewer with search keywords highlighted		Can be any keywords in the document.
highlightsLinksXML	Pass search variables in xml form		xml
highlightsLinksXML URL	Pass search variables in a url to a xml		Link to xml

**Example searchQuery:** Loading Viewer with first "Magic" search keyword pre highlighted and then let user jump to next "Magic" keyword in document  
Search Variables: searchQuery=Magic

Passing multiple variables to load for search  
Search Variables: searchQuery=Magic|this  
| is the delimiter

### Example highlightsLinksXML or highlightsLinksXMLURL

highlightsLinksXML = "<root><actions><action type='.....'"  
highlightsLinksXMLURL = 'highlights.xml'

Sample highlight.xml

```
<root>
<actions>
<action type='addLink'><link documentname="Sample.doc" id="test123" userid="" tooltip=""
mode="ByText" occurrence="all" page="2" allowDelete="true" color="16776960" start="0"
end="0" annotation="0" link="http://www.yahoo.com" editable="0"><![CDATA[the]]></link>
</action>
<action type='addHighlight'>
<highlight documentname=" Sample.doc " id="test123" userid="" tooltip="" mode="ByText"
occurrence="all" page="2" allowDelete="true" color="16776960" start="0" end="0"
annotation="0" editable="0"><![CDATA[this]]></highlight>
</action>
</actions>
</root>
```

Setting editable="0" will not open the highlight options when clicked on the highlighted text or link.

## Events to/from Viewer

Prizm Content Connect Plus is built in such a way that it can be truly integrated and embedded into your application. Events are JavaScript AJAX calls that Viewer can generate when certain actions occur. Developers can also send JavaScript AJAX events to Viewer from their code and have Viewer perform certain actions without reloading the whole page.

### Sending events to Viewer

To send events to viewer you have to follow the following steps –

- 1) Pass a FlashVar to ViewerEnterprise.swf to indicate you will be sending events to Viewer

```
sendViewerEvents=Yes
```

- 2) In your page where you call ViewerEnterprise.swf, add the following code

```
<script src="swfobject.2.2.js" language="javascript"></script>
<script type="text/javascript">
    var params = {
        wmode: 'opaque',
        scale: 'noscale',
        allowFullScreen: true,
        allowScriptAccess: 'always',
        bgcolor: '#ffffff'
    };
    var attributes = {
        id: 'ViewerEnterprise',
        name: 'ViewerEnterprise'
    };
    var flashvars = {
        documentname: '<? echo $document; ?>',
        saveDocumentLocation: 'savedocument.php',
        sendViewerEvents:'Yes'
    };
    swfobject.embedSWF("ViewerEnterprise.swf?<? echo time();?>", "documentviewer", "620", "800",
"10.0.0", false, flashvars, params, attributes);
</script>
<noscript>
    Javascript needs to be enabled to view the document in viewer.
</noscript>
<div id="documentviewer"></div>
```

**sendTextToFlash** function is used to interact with Viewer and following events can be sent:

Event	Details
Next	Move to next page
Previous	Move to pervious page
ZoomIn	Zoom In on the document
ZoomOut	Zoom Out on document
FitToWidth	Set Zoom=100%
MoveDown	Move the page down
MoveUp	Move the page up
MoveLeft	Move the page left
MoveRight	Move the page right

Print	Print the document
Rotate	Rotate the document by 90 degree

Example:

```
<a href=javascript:ViewerEnterprise.sendTextToFlash("Previous")>Previous</a>
<a href=javascript:ViewerEnterprise.sendTextToFlash("Next")>Next</a>
<a href=javascript:ViewerEnterprise.sendTextToFlash("ZoomIn")>Next</a>
```

### Calling Viewer Methods

Method	Details
alert	Show an alert box in the viewer with a message
<b>assignHighlightColor</b>	Assign a color through javascript for text selection
<b>loadHighlights</b>	Passing Highlights XML to Viewer through JavaScript
<b>clearHighlights</b>	Clear loaded highlights XML

### Showing an alert box in the Viewer

```
alert("text to be shown in alert box")
```

Example:

```
<a href=javascript: ViewerEnterprise.alert("text to be shown in alert box")>Show Alert</a>
```

### Assigning text selection color via javascript

```
assignHighlightColor(hexcode of color)
```

Example:

```
<a href=javascript: ViewerEnterprise.assignHighlightColor (0xFFFF00)>Set Color</a>
```

### Passing Highlights XML to Viewer through JavaScript

```
loadHighlights(XML_TO_ADD)
clearHighlights()
```

Example:

```
ViewerEnterprise.loadHighlights( "<root><actions><action type='addHighlight'> <highlight
documentname='PowerCfg.odt' id='AE40B90F8A971CF262C3090970DEC151' userid='' tooltip=''
mode='ByText' occurrence='1' page='0' allowDelete='true' color='16776960' start='0' end='0'
annotation='0'><![CDATA[paper]]></highlight></action></actions></root>" );
```

```
ViewerEnterprise.clearHighlights();
```

### Receiving events from Viewer

Viewer can send events when certain actions are performed in the viewer.

To receive the events follow these steps :

- 1) Pass a FlashVar to ViewerEnterprise.swf to indicate you will be sending events to Viewer

getViewerEvents=Yes

2) Add the javascript code in your page as shown below

```
<script src="swfobject.2.2.js" language="javascript"></script>
<script type="text/javascript">
  var params = {
    wmode: 'opaque',
    scale: 'noscale',
    allowFullScreen: true,
    allowScriptAccess: 'always',
    bgcolor: '#ffffff'
  };
  var attributes = {
    id: 'ViewerEnterprise',
    name: 'ViewerEnterprise'
  };
  var flashvars = {
    documentname: '<? echo $document; ?>',
    saveDocumentLocation: 'savedocument.php',
    getViewerEvents:'Yes'
  };
  swfobject.embedSWF("ViewerEnterprise.swf<? echo time();?>", "documentviewer", "620", "800",
"10.0.0", false, flashvars, params, attributes);
</script>
<noscript>
Javascript needs to be enabled to view the document in viewer.
</noscript>
<div id="documentviewer"></div>
```

The following events are sent by the Viewer

Event	Details
OnError(documentname, pagenumber)	A custom HTTP Status Error Code 500 is returned from conversion url instead of converted swf
viewerOnDocumentZoom(documentname, zoom)	Zoom is pressed. Returns documentname & zoom size
viewerOnDocumentScroll(documentname)	Document is scrolled
viewerOnDocumentLoad(documentname)	Document is loaded in the viewer
viewerOnDocumentDownload(documentname)	Document is downloaded/Save button was pressed
viewerOnDocumentRotate(documentname)	Document is rotated by 90 degree
viewerOnDocumentPrint(documentname)	Print button was clickec
viewerOnDocumentFullScreen(documentname)	Document is viewed in Full Screen Mode
viewerOnSelectText(documentname, pagenumber, startpos, endpos, selectedtext)	Text is selected on document. Returns Document Name, Page Number, Start Character Position of Text Highlighted, End Character Position of Text Highlighted, Selected Text Contents
viewerOnDocumentTextSelected(documentname)	After text selection is complete
viewerOnInternalLinkClick(pageClicked)	An internal link in document is clicked. Like bookmark or link to another page in the document
viewerOnExternalLinkClick(linkUrl)	An external link in document is clicked. Like www.google.com is a link in

	document and is clicked
onHighlightEvent(eventName , highlightXML)	This is the event passed by viewer when a certain text is selected by used and added as Highlight, Link, Tag or Redaction.
onPagesAllLoaded()	Fired when all pages in the document have been loaded
onThumbView()	Fired when user clicks on thumbnail view button
onFullView()	Fired when user comes out of the thumbnail view
tabChanged ( nameOfActivatedTab:String )	Event fired when tab is changed in the viewer

### Highlight Events Sent by viewer

JS method that is called : onHighlightEvent ( eventName , highlightXML )

#### eventNames

highlightSaveMenuOpened  
highlightAdd  
highlightExistingMenuOpened  
highlightMenuCancelled  
highlightRemove  
highlightOpenLink

#### Example:

```
<script language="javascript">
function viewerOnDocumentPrint(documentname)
{
  alert("document: " + documentname);
}

function viewerOnSelectText(documentname,pagenumner,startpos,endpos,selecetdtext)
{
  alert(startpos+" "+endpos);
}

function onHighlightEvent(eventName, highlightXML)
{
  alert(eventName + " " + highlightXML);
}
</script>
```

#### Show an alert and redirect on Server Error

Send an HTTP Status Error Code 500 from server for this event to trigger

```
<script language="javascript">
function OnDocumentError(documentname,pageNumber)
{
  ViewerEnterprise.alert("Some error occurred");
  location.href="error.aspx";
}
</script>
```

## Translations

Prizm Content Connect has a built in translation option to allow document text translation using a translation service.

Translation service can be set to anything or you can use the free translation services like Google Translate or Yahoo Bablefish etc.

### Translation Variables

Name	Description	Value
translationTool	Turns translation on/off	Yes/No
translationPoweredBy	Allows you to write Powered by text. Serves the legal requirement by some free translation engines like Google.	
langFrom	Sets the languages to be allowed to choose for. This the set of languages from which translation can occur	langFrom=English,Afrikaans,Albanian,Arabic,Belarusian,Bulgarian,Chinese,Croatian,Czech,Danish,Dutch,Estonian,Filipino,Finnish,French,Galician,German,Greek,Hebrew,Hindi,Hungarian,Icelandic,Indonesian,Irish,Italian,Japanese,Korean,Latvian,Lithuania n,Macedonian,Malay,Maltese,Norwegian,Persian,Polish,Portuguese,Romanian,Russian,Spanish,Serbian,Slovak,Slovenian,Swahili,Swedish,Thai,Turkish,Ukrainian,Vietnamese,Welsh,Yiddish
langTo	Sets the languages to be allowed to choose for. This the set of languages to which translation can occur	langTo=Afrikaans,Albanian,Arabic,Belarusian,Bulgarian,Chinese,Croatian,Czech,Danish,Dutch,English,Estonian,Filipino,Finnish,French,Galician,German,Greek,Hebrew,Hindi,Hungarian,Icelandic,Indonesian,Irish,Italian,Japanese,Korean,Latvian,Lithuanian,Macedonian,Malay,Maltese,Norwegian,Persian,Polish,Portuguese,Romanian,Russian,Spanish,Serbian,Slovak,Slovenian,Swahili,Swedish,Thai,Turkish,Ukrainian,Vietnamese,Welsh,Yiddish
translationServiceURL	The url which performs the translation and returns the translated text	translationServiceURL=/translate/translation.php

Example Code (Using SWF Object):

```
<script src="swfobject.2.2.js" language="javascript"></script>
<script type="text/javascript">
  var params = {
    wmode: 'opaque',
    scale: 'noscale',
```

```

allowFullScreen: true,
allowScriptAccess: 'always',
bgcolor: '#ffffff'
};
var attributes = {
    id: 'ViewerEnterprise',
    name: 'ViewerEnterprise'
};
var flashvars = {
documentname: '<? echo $filename; ?>',

saveDocumentLocation: 'savedocument.php?document=<? echo $filename; ?>',

translationTool: 'Yes',

```

**langFrom: 'English,Afrikaans,Albanian,Arabic,Belarusian,Bulgarian,Chinese,Croatian,Czech,Danish,Dutch,Estonian,Filipino,Finnish,French,Galician,German,Greek,Hebrew,Hindi,Hungarian,Icelandic,Indonesian,Irish,Italian,Japanese,Korean,Latvian,Lithuanian,Macedonian,Malay,Maltese,Norwegian,Persian,Polish,Portuguese,Romanian,Russian,Spanish,Serbian,Slovak,Slovenian,Swahili,Swedish,Thai,Turkish,Ukrainian,Vietnamese,Welsh,Yiddish',**

**langTo: 'Afrikaans,Albanian,Arabic,Belarusian,Bulgarian,Chinese,Croatian,Czech,Danish,Dutch,English,Estonian,Filipino,Finnish,French,Galician,German,Greek,Hebrew,Hindi,Hungarian,Icelandic,Indonesian,Irish,Italian,Japanese,Korean,Latvian,Lithuanian,Macedonian,Malay,Maltese,Norwegian,Persian,Polish,Portuguese,Romanian,Russian,Spanish,Serbian,Slovak,Slovenian,Swahili,Swedish,Thai,Turkish,Ukrainian,Vietnamese,Welsh,Yiddish',**

**translationPoweredBy: 'Powered by Google Translate',**

```

translationServiceURL: 'translate/translation.php'      };
swfobject.embedSWF("ViewerEnterprise.swf<? echo time();?>", "documentviewer", "620", "800",
"10.0.0.0", false, flashvars, params, attributes);
</script>
<noscript>
Javascript needs to be enabled to view the document in viewer.
</noscript>
<div id="documentviewer"></div>

```

## Example Translation Service (PHP) (Using Google API Translate)

```

<?php
header('Content-Type: text/html; charset=utf-8');

$langFrom=$_POST["langFrom"];
$langTo=$_POST["langTo"];
$text = $_POST["text"];

$langFrom=getLanCode($langFrom);
$langTo=getLanCode($langTo);

translate($text,$langFrom,$langTo);

function getLanCode($langC)
{
switch ($langC)
{

```

Case "Afrikaans":

```
$langcode="af";
```

```
break;
```

Case "Albanian":

```
$langcode="sq";
```

```
break;
```

Case "Arabic":

```
$langcode="ar";
```

```
break;
```

Case "Belarusian":

```
$langcode="be";
```

```
break;
```

Case "Bulgarian":

```
$langcode="bg";
```

```
break;
```

Case "Catalan":

```
$langcode="ca";
```

```
break;
```

Case "Chinese":

```
$langcode="zh-CN";
```

```
break;
```

Case "Croatian":

```
$langcode="hr";
```

```
break;
```

Case "Czech":

```
$langcode="cs";
```

```
break;
```

Case "Danish":

```
$langcode="da";
```

```
break;
```

Case "Dutch":

```
$langcode="nl";
```

```
break;
```

Case "English":

```
$langcode="en";
```

```
break;
```

Case "Estonian":

```
$langcode="et";
```

```
break;
```

Case "Filipino":

```
$langcode="tl";
```

```
break;
```

Case "Finnish":

```
$langcode="fi";
```

```
break;
```

Case "French":

```
$langcode="fr";
```

```
break;
```

Case "Galician":

```
$langcode="gl";
```

```
break;
```

Case "German":

```
$langcode="de";
```

```
break;
```

```
Case "Greek":
$langcode="el";
break;

Case "Hebrew":
$langcode="iw";
break;

Case "Hindi":
$langcode="hi";
break;

Case "Hungarian":
$langcode="hu";
break;

Case "Icelandic":
$langcode="is";
break;

Case "Indonesian":
$langcode="id";
break;

Case "Irish":
$langcode="ga";
break;

Case "Italian":
$langcode="it";
break;

Case "Japanese":
$langcode="ja";
break;

Case "Korean":
$langcode="ko";
break;

Case "Latvian":
$langcode="lv";
break;

Case "Lithuanian":
$langcode="lt";
break;

Case "Macedonian":
$langcode="mk";
break;

Case "Malay":
$langcode="ms";
break;

Case "Maltese":
$langcode="mt";
break;

Case "Norwegian":
$langcode="no";
break;

Case "Persian":
$langcode="fa";
break;

Case "Polish":
$langcode="pl";
break;

Case "Portuguese":
```

```

$langcode="pt";
break;

Case "Romanian":
$langcode="ro";
break;

Case "Russian":
$langcode="ru";
break;

Case "Serbian":
$langcode="sr";
break;

Case "Slovak":
$langcode="sk";
break;

Case "Slovenian":
$langcode="sl";
break;

Case "Spanish":
$langcode="es";
break;

Case "Swahili":
$langcode="sw";
break;

Case "Swedish":
$langcode="sv";
break;

Case "Thai":
$langcode="th";
break;

Case "Turkish":
$langcode="tr";
break;

Case "Ukrainian":
$langcode="uk";
break;

Case "Vietnamese":
$langcode="vi";
break;

Case "Welsh":
$langcode="cy";

break;

Case "Yiddish":
$langcode="yi";
break;

}

return $langcode;
}

function translate($text,$srcLang = 'en',$destLang = 'hi') {
$text = urlencode($text);
$destLang = urlencode( $destLang );
$srcLang = urlencode( $srcLang );

```

```
$trans = @file_get_contents("http://ajax.googleapis.com/ajax/services/language/translate?
v=1.0&q={$text}&langpair={$srcLang}|{$destLang}");

$translate = explode("translatedText:",$trans);
$translate = explode("}',",$translate[1]);

echo "<root>";
echo "<translation from=\"" . $srcLang . " to=\"" . $destLang . "\">";
    //echo $translate[0];
    echo $translate[0];
echo "</translation>";
echo "</root>";
}
?>
```

### Localizing the Viewer

Prizm Content Connect can be totally localized to the languages needed.

For example to display German Language tooltips, simply pass FlashVar as **locale=german**.

where german is the german.xml residing at same location as ViewerEnterprise.swf

XML shown below is a sample xml for locale=english

To generate xml for any other language or change the text, simply replace the xml nodes with local language text. Example for locale=hindi you can have xml node PreviousPage as

```
<PreviousPage>पिछले पृष्ठ</PreviousPage>
```

```
<tooltips>
<PreviousPage>Previous</PreviousPage>
<DateFormat>MMMM D, YYYY</DateFormat>
<CurrentPage>Current Page</CurrentPage>
<TotalPages>Total Pages</TotalPages>
<NextPage>Next Page</NextPage>
<ZoomIn>Zoom In</ZoomIn>
<ZoomOut>Zoom Out</ZoomOut>
<FitToWidth>Fit To Width</FitToWidth>
<Rotate>Rotate</Rotate>
<ZoomSlider>Zoom Slider</ZoomSlider>
<CurrentZoom>Current Zoom</CurrentZoom>
<TextToSearch>Text to search</TextToSearch>
<StartSearch>Search / Next result</StartSearch>
<SearchResults>Search Results</SearchResults>
<PreviousSearchResult>Previous search results</PreviousSearchResult>
<NextSearchResult>Next search result</NextSearchResult>
<CloseSearch>Close search</CloseSearch>
<SelectText>Select text</SelectText>
<PrintDocument>Print document</PrintDocument>
<FullScreen>Go fullscreen</FullScreen>
<Save>Save</Save>
<ThumbNailView>Thumbnail view</ThumbNailView>
<HighlightColor>Highlight color</HighlightColor>
<CopyText>Copy text</CopyText>
<CustomBtn1></CustomBtn1>
<CustomBtn2></CustomBtn2>
<CustomBtn3></CustomBtn3>
<TranslateText>Translate Text</TranslateText>
<ChangeLanguage>Change Language</ChangeLanguage>
<Close>Close</Close>
<TranslatedFrom>Translated From</TranslatedFrom>
<To>To</To>
<From>From</From>
<TranslatingPleaseWait>Translating, please wait...</TranslatingPleaseWait>
<PrintThisRange>print this range</PrintThisRange>
<PrintAllPages>print all pages</PrintAllPages>
<PrintCurrentPage>print current page</PrintCurrentPage>
<RangeDescription>Enter a single page, or a range of pages. Examples: 5-12 or 5 or
3,2,5</RangeDescription>
<CancelPrinting>cancel printing</CancelPrinting>
<TranslationSettings>Translation Settings</TranslationSettings>
<FullScreenSearchWarning>Please perform search outside of full screen
mode.</FullScreenSearchWarning>
```

```

<AnnotationSaveSuccessMsg>Annotations saved!</AnnotationSaveSuccessMsg>
<AnnotationErrorGettingFiles>Error getting annotation files from server :</AnnotationErrorGettingFiles>
<AnnotationErrorSavingFiles>Error saving annotations to server :</AnnotationErrorSavingFiles>
<AnnotationErrorGettingAnnotations>Error getting annotations from server
:</AnnotationErrorGettingAnnotations>
<AnnotationsClickFileToOpen>Click on file to open...</AnnotationsClickFileToOpen>
<Cancel>Cancel</Cancel>
<SaveBtn>Save</SaveBtn>
<AnnotationsSave>Save annotations</AnnotationsSave>
<AnnotationsFileName>Markup name :</AnnotationsFileName>
<AnnotationSaveToDesktop>Save document to your desktop</AnnotationSaveToDesktop>
<AnnotationSaveAnnotations>Save Annotations</AnnotationSaveAnnotations>
<AnnotationSaveCancel>Cancel</AnnotationSaveCancel>
<StampSelectText>Select stamp text :</StampSelectText>
<StampNewStamp>(new stamp text)</StampNewStamp>
<AnnotationRichTextDone>Done</AnnotationRichTextDone>
<HighlightRemoveTag>Remove Tag</HighlightRemoveTag>
<HighlightRemoveHighlight>Remove Highlight</HighlightRemoveHighlight>
<HighlightCancel>Cancel</HighlightCancel>
<HighlightProperties>Properties</HighlightProperties>
<AnnotationRemoveHighlight>Remove Highlight</AnnotationRemoveHighlight>
<PreFilledSearchText>Search...</PreFilledSearchText>
<TabHome>Home</TabHome>
<TabHomeCategoryFile>File</TabHomeCategoryFile>
<TabHomeCategoryZoom>Zoom</TabHomeCategoryZoom>
<TabHomeCategoryNavigate>Navigate</TabHomeCategoryNavigate>
<TabHomeCategoryClipboard>Clipboard</TabHomeCategoryClipboard>
<TabHomeCategoryFullscreen>Fullscreen</TabHomeCategoryFullscreen>
<TabView>View</TabView>
<TabViewCategoryDocumentViews>Document Views</TabViewCategoryDocumentViews>
<TabSearch>Search</TabSearch>
<TabSearchCategorySearch>Search</TabSearchCategorySearch>
<TabTranslate>Translate</TabTranslate>
<TabTranslateCategoryTranslate>Translate</TabTranslateCategoryTranslate>
<TabReview>Review</TabReview>
<TabReviewCategoryFile>File</TabReviewCategoryFile>
<TabReviewCategoryShowHide>Delete/Hide</TabReviewCategoryShowHide>
<TabReviewCategoryDraw>Draw</TabReviewCategoryDraw>
<PrintAnnotations>Print annotations?</PrintAnnotations>
<ReviewSelectText>Select text</ReviewSelectText>
<ReviewCircle>Circle</ReviewCircle>
<ReviewCircleFilled>Filled Circle</ReviewCircleFilled>
<ReviewRectangle>Rectangle</ReviewRectangle>
<ReviewRectangleFilled>Filled Rectangle</ReviewRectangleFilled>
<ReviewRectangleTrans>Transparent Rectangle</ReviewRectangleTrans>
<ReviewArrow>Arrow</ReviewArrow>
<ReviewLine>Line</ReviewLine>
<ReviewColor>Color</ReviewColor>
<ReviewToggleOn>Toggle view on</ReviewToggleOn>
<ReviewToggleOff>Toggle view off</ReviewToggleOff>
<ReviewDelete>Delete</ReviewDelete>
<ReviewStamp>Stamp</ReviewStamp>
<ReviewText>Text</ReviewText>
<HighlightRemoveLink>Remove Link</HighlightRemoveLink>
<HighlightOpenLink>Open Link</HighlightOpenLink>
<HighlightRemoveRedaction>Remove Redaction</HighlightRemoveRedaction>
<HighlightLinkInputInstructions>Please input a link location:</HighlightLinkInputInstructions>
<selectAddTag>Add Tag</selectAddTag>
<selectHighlight>Add Highlight</selectHighlight>
<selectLink>Add Link</selectLink>
<selectRedaction>Add Redaction</selectRedaction>
<selectCopyText>Copy Text</selectCopyText>
<selectCancel>Cancel</selectCancel>
<searchNoAdditionalResults>No additional results found.</searchNoAdditionalResults>
<selectAddTag>Add Tag</selectAddTag>

```

```
<selectHighlight>Add Highlight</selectHighlight>
<selectLink>Add Link</selectLink>
<selectCopyText>Copy Text</selectCopyText>
<selectCancel>Cancel</selectCancel>
<fullscreenNoticeText>You have entered full screen mode. Please note that keyboard controls are not
available while in this mode.</fullscreenNoticeText>
<fullscreenNoticeSupressCheckbox>Do not show this warning again</fullscreenNoticeSupressCheckbox>
<fullscreenNoticeOKButton>OK</fullscreenNoticeOKButton>
</tooltips>
```

# Generating Thumbnails

Prizm Content Connect has a built in script to generate thumbnail images of the various pages of the documents. These thumbnails can be displayed as png image files in various applications or used to create several applications like thin client viewer, mobile viewer etc

For creating a batch process or other applications, thumbnails can be generated using convert2swfclient or by using the Webservice.

Thumbnail related arguments

wtmtext	watermark text. Adds watermark on each page(Note – Watermark feature requires full license key. It does not work with trial evaluation key)
wtmfont	watermark font, default: Helvetica
wtmsize	watermark size, default: 130
wtmalpha	watermark opacity (1-100), default: 10

## Generating thumbnails using convert2swfclient

### Example 1:

To create a thumbnail of page 1 of sample.doc:

```
java -jar convert2swfclient.jar source=sample.doc thumbnail=100x100 pages=1
```

### Example 2:

To create a thumbnail of all pages of sample.doc:

```
java -jar convert2swfclient.jar source=sample.doc thumbnail=100x100
```

**Example 3:** (Note – Watermark feature requires full license key.)

To create a thumbnail of page 6 of sample.doc, specify target location, and add watermark "Approved" on each thumbnail:

```
java -jar convert2swfclient.jar source=/var/www/html/samplecode/sample.doc  
target=/var/www/html/samplecode/ thumbnail=100x100 wtmtext=Approved wtmfont=Helvetica  
wtmsize=50 wtmalpha=70
```

## Generating thumbnails using Webservice

### Example 1:

To create a thumbnail of page 1 of sample.doc:

```
http://localhost:18680/convert2swf?  
source=/var/www/html/samplecode/sample.doc&thumbnail=100x100&pages=1
```

### Example 2:

To create a thumbnail of all pages of sample.doc:

```
java -jar convert2swfclient.jar source=sample.doc thumbnail=100x150  
http://localhost:18680/convert2swf?  
source=/var/www/html/samplecode/sample.doc&thumbnail=100x150
```

**Example 3:** (Note – Watermark feature requires full license key.)

To create a thumbnail of page 6 of sample.doc, specify target location, and add watermark "Approved" on each thumbnail:

```
http://localhost:18680/convert2swf?  
source=/var/www/html/samplecode/sample.doc&wtmtext=Approved&wtmfont=Helvetica&wtm  
size=100&wtmalpha=10&target=/var/www/html/temp/
```

## Generating Images

Prizm Content Connect has a built in script to generate images (jpeg, png, tiff or bmp) of the various pages of the documents. These images can be displayed in various applications or used to create several applications like thin client viewer, mobile viewer etc

Related arguments

source	the source file for conversion.
target	the target folder and target file. Target can be image (jpeg, png, tiff or bmp)
dpi	for specifying depth per inch ratio of output swf and image files

### Generating images using convert2swfclient

#### Example 1:

To create a .png image of page 1 of sample.doc:

```
java -jar convert2swfclient.jar source=sample.doc target=sample.png pages=1
```

To create a .bmp image of page 1 of sample.doc:

```
java -jar convert2swfclient.jar source=sample.doc target=sample.bmp pages=1
```

#### Example 2:

To create a .png image of all pages of sample.doc:

```
java -jar convert2swfclient.jar source=sample.doc target=sample.png
```

To create a .tiff image of all pages of sample.doc:

```
java -jar convert2swfclient.jar source=sample.doc target=sample.tiff
```

#### Example 3: (Note – Watermark feature requires full license key.)

To create an image of all pages of sample.doc and add watermark "Approved" on each image:

```
java -jar convert2swfclient.jar source=/var/www/html/samplecode/sample.doc  
target=/var/www/html/samplecode/sample.png wtmtext=Approved wtmfont=Helvetica  
wtmsize=50 wtmalpha=70
```

### Generating images using Webservice

#### Example 1:

To create a .png image of page 1 of sample.doc:

```
http://localhost:18680/convert2swf?  
source=/var/www/html/samplecode/sample.doc&target=/var/www/html/samplecode/sample.png  
&pages=1
```

To create a .bmp image of page 1 of sample.doc:

```
http://localhost:18680/convert2swf?  
source=/var/www/html/samplecode/sample.doc&target=/var/www/html/samplecode/sample.bm  
p&pages=1
```

#### Example 2:

To create a .png image of all pages of sample.doc:

```
http://localhost:18680/convert2swf?  
source=/var/www/html/samplecode/sample.doc&target=/var/www/html/samplecode/sample.png
```

To create a .tiff image of all pages of sample.doc:

```
http://localhost:18680/convert2swf?  
source=/var/www/html/samplecode/sample.doc&target=/var/www/html/samplecode/sample.tiff
```

**Example 3:** (Note – Watermark feature requires full license key.)

To create an image of all pages of sample.doc and add watermark “Approved” on each image:

[http://localhost:18680/convert2swf?  
source=/var/www/html/samplecode/sample.doc&wtmtext=Approved&wtmfont=Helvetica&wtmsi  
ze=100&wtmalpha=10&target=/var/www/html/temp/test.png](http://localhost:18680/convert2swf?source=/var/www/html/samplecode/sample.doc&wtmtext=Approved&wtmfont=Helvetica&wtmsize=100&wtmalpha=10&target=/var/www/html/temp/test.png)

## Extracting Text

Prizm Content Connect has a built in script to extract for any type of documents. Specific license may be required for text extraction to work

Related arguments

source	the source file for conversion.
target	the target folder and target file

### Extracting text using convert2swfclient

#### Example 1:

To extract text of all pages sample.doc and place in same directory as source:

```
java -jar convert2swfclient.jar source=sample.doc target=sample.txt
```

#### Example 2:

To extract text of page 1 sample.doc and place in same directory as source:

```
java -jar convert2swfclient.jar source=sample.doc target=sample.txt pages=1
```

#### Example 3:

To extract text of page 1 sample.doc and place in a different directory:

```
java -jar convert2swfclient.jar source=sample.doc target=/var/www/html/samplecode/sample.txt  
pages=1
```

### Extracting text using Webservice

#### Example 1:

To extract text of all pages sample.doc and place in same directory as source:

<http://localhost:18680/convert2swf?>

[source=/var/www/html/samplecode/sample.doc&target=/var/www/html/samplecode/sample.txt](http://localhost:18680/convert2swf?source=/var/www/html/samplecode/sample.doc&target=/var/www/html/samplecode/sample.txt)

#### Example 2:

To extract text of page 1 sample.doc and place in same directory as source:

<http://localhost:18680/convert2swf?>

[source=/var/www/html/samplecode/sample.doc&target=/var/www/html/samplecode/sample.txt  
&pages=1](http://localhost:18680/convert2swf?source=/var/www/html/samplecode/sample.doc&target=/var/www/html/samplecode/sample.txt&pages=1)

#### Example 3:

To extract text of page 1 sample.doc and place in a different directory:

<http://localhost:18680/convert2swf?>

[source=/var/www/html/samplecode/sample.doc&target=/var/www/html/samplecode/sample.txt  
&pages=1](http://localhost:18680/convert2swf?source=/var/www/html/samplecode/sample.doc&target=/var/www/html/samplecode/sample.txt&pages=1)

### Client Side Flash Detection

Prizm Content Connect Plus requires client browser to have version 9 of Flash Player Kit or Plugin installed. So you must ensure that the audience always has the right version of Flash Player installed.

This chapter provides details on how developers can detect the installed version of Flash Player using Client-Side Scripting. There are several ways to detect flash version.

This method uses JavaScript to check for the existence of a Netscape plug-in or an ActiveX control, and provides the logic for either displaying your Flash content or initiating an installation of the correct player version. Use script-based detection when deploying Flash content to modern browsers and operating systems. If you want to display alternate content based on the configuration of end users' computers and browsers, script-based detection can determine version and configuration information that is not detectable by other methods.

#### Client-side detection method sample files

<http://www.adobe.com/devnet/flashplayer/articles/swfobject.html>

Here is an example of detecting flash version using JavaScript SWF Object:

```
<script src="swfobject.2.2.js" language="javascript"></script>

<script type="text/javascript">
var playerVersion = swfobject.getFlashPlayerVersion();
var output = "You have Flash player " + playerVersion.major + "." + playerVersion.minor + "." +
playerVersion.release + " installed"; alert(output);
</script>

<script type="text/javascript">
    var params = {
        wmode: 'opaque',
        scale: 'noscale',
        allowFullScreen: true,
        allowScriptAccess: 'always',
        bgcolor: '#ffffff'
    };
    var attributes = {
        id: 'ViewerEnterprise',
        name: 'ViewerEnterprise'
    };
    var flashvars = {
        documentname: '<? echo $document; ?>'
    };
    swfobject.embedSWF("ViewerEnterprise.swf?<? echo time();?>", "documentviewer", "620", "800",
"10.0.0", false, flashvars, params, attributes);
</script>
<noscript>
Javascript needs to be enabled to view the document in viewer.
</noscript>
<div id="documentviewer"></div>
```

## Error Codes & Exception Handling

Prizm Content Connect Plus can throw exceptions at two different levels – Viewer & convert2swfclient.jar

### Viewer Error Codes

Error Code	Description of Error
10000	Document could not be loaded. Please specify the 'documentname' variable in your html code
10001	Settings XML File Not Found. Make sure settingsenterprise.xml file exists in same location as ViewerEnterprise.swf
10002	Input Output Fast Page Count Error. getFastPageCount file not found or contains error
10003	Security Fast Page Count Error. getFastPageCount file not accessible
10004	This document has only n pages.Wrong start page given
10005	Input Output Total Pages Error. getTotalPages file not found or contains error
10006	Security Total Pages Error. getTotalPages file not accessible
10007	Internal Argument Error
10008	Container Security Error
10009	External interface not available
10010	Input Output Page Conversion Error. Conversion file not found or contains error
10011	Security Page Conversion Error. Conversion file not accessible
10012	Input Output Page Load Error. Generated swf file on server not accessible or cannot be loaded
10013	Security Fast Page Load Error. Generated swf file on server not accessible
99999	Unknown Error

### Convert2SWF Error & Exception Codes:

FlexiDocException signals that some exception has occurred in OpenOffice.org background process.

### FlexiDocException

```
public FlexiDocException(java.lang.String message,
                        int errorId,
                        java.lang.Exception runtimeException)
```

Constructs a new FlexiDocException with a message, error id and Exception object.

Parameters:

message - a string containing the error message

errorId - a number containing error id

runtimeException - an Exception object to be stored inside new FlexiDocException object

Exception Summary	
ERROR_CALC_SHEET	an error has occurred manipulating a document in calc (201)
ERROR_CONNECTION_INIT	error while connection initialization (1)
ERROR_CONVERT_INIT	error while conversion initialization (2)
ERROR_EXCEPTION	reserved for general exception (9999)
ERROR_OK	no error (0)
ERROR_WRITER_IMAGE	an error has occurred manipulating an image in writer (103)
ERROR_WRITER_OPENDOC	an error has occurred while opening document in writer(101)
ERROR_WRITER_SAVEDOC	an error has occurred while saving document in writer (102)

## Viewer JS Events for Handling Error

Viewer fires a Javascript event when an error is encountered from server

OnDocumentError(documentname, pagenumber)	A custom HTTP Status Error Code 500 Internal Server Error is returned from conversion url instead of converted swf
---	--

### Show an alert and redirect on Server Error

Send an HTTP Status Error Code 500 from server for this event to trigger

```
<script language="javascript">
function OnDocumentError(documentname,pageNumber)
{
  ViewerEnterprise.alert("Some error occurred");
  location.href="error.aspx";
}
</script>
```

**Sample Server ASP .net code sending** Status Error Code 500 Internal Server Error

```
Response.Status = "500 Internal Server Error";
```

```
Response.StatusCode = 500;
```

## Fine Tuning the Viewer

Prizm proxy service is required to be running for convert2swf utility to run. This service is installed and started during the installation process. Prizm Service basically creates a proxy which handles the document conversions and provides load balancing by using various ports on the machine. The Prizm Proxy Server will need to be fine tuned based on the load you are expecting on your server. By default AJAX Document Proxy Server runs as a service on port 18580,18680 and uses several ports. You can add more ports as your server load increases.

Prizm Proxy can be started from command line using the following syntax

```
java -jar bin\convert2swf.jar proxyconfig=conf/ proxyserver_jar.properties
```

**run\_proxy** script can be also be used to start the proxy directly from the command line.

**proxyserver\_jar.properties** contains the parameters and port information needed for Prizm Proxy Service to run.

**jrunner.properties** contains the Prizm Proxy Service setup information.

jrunner-linux-x86-32.properties for 32 bit Linux OS

jrunner-linux-x86-64.properties for 64 bit Linux OS

*convert2swf\_proxy.properties & jrunner.properties are located in conf directory.*

To set up the service manually or to start the service manually you can use the included utilities to start, stop or install and uninstall the service. These utilities reside in 'scripts' folder under installation directory.

Script	Description	Arguments
install-service	Install the Prizm Service	
start-service	Start the Prizm Service	
stop-service	Stop the Prizm Service	
remove-service	Remove the Prizm Service	

### proxyserver\_jar.properties

convert2swf proxy needs proxyserver\_jar.properties to run and you can change the proxy server configuration by changing the parameters in proxyserver\_jar.properties file.

Parameter	Value
http_host	HTTP server listen host or IP (This is host for Prizm Webservice)
http_port	HTTP server listen port
http_workers_ini	HTTP server initial number of workers
http_workers_max	HTTP server maximum number of workers
http_socket_timeout	HTTP server socket timeout
http_response_timeout	HTTP server response timeout
proxy_host	Proxy listen host or IP
proxy_port	Proxy listen port
ooo_installation	Location where open office is located in Prizm installation directory (Recommended location is C:/prizm/App/openoffice)
Customerid	Registration info customerid provided after purchase of product
Regkey	Registration Key

	regkey provided after purchase of product
proxy_host	Location where proxy server is running. Default Value is Localhost
work_directory	work directory (contains proxy workers user profiles and temporary files) Default Value is ../work
ooo_worker_host	OpenOffice.org workers base host or IP Default Value is localhost
ooo_instances	Number of OpenOffice.org instances (workers) to be started Each worker listens on ooo_base_host:[ooo_base_port+instance_number], where instance_number = {0, 1, .., (ooo_instances-1)} ooo_instances=2  You can start more instances based on load over your server. Each instance on average requires about 150MB dedicated RAM to run. Default value is 2
ooo_startup_delay	Number of seconds to wait for a worker instance to start. The parameter is important during startup. If the any of instance working thread does not respond within this interval such situation is treated as 'fatal error' and the proxyserver exits. Default value is 60
ooo_usage_count	Number of 'uses' after which worker instance will be restarted Once the worker thread hits this limit the threads are restarted. Default value is 20
ooo_usage_count_rand	Random attribute for usage count to avoid load peaks after certain point of time Default value is 5
sleeping_delay	Number of seconds how long the proxy should put worker in 'sleeping mode' before it will be assigned another task (helps garbage collector) Default value is 2
shutdown_delay	Number of seconds how long the proxy should wait for the shutdown of a worker thread Default value is 1
worker_timeout	Number of seconds how long the single worker thread is allowed to run Default value is 300
log_level	Logging levels NONE                                shows no output at all ERROR                                shows only errors and fatal errors INFO                                    shows information messages WARNING                                shows warnings DEBUG                                  shows debugging information (very verbose!) Default Value is INFO <i>Logs are created under log directory</i>
jvm_daily_restart	JVM daily auto restart schedule for cleaning and Garbage Collection Set this to time during the day when you get low traffic Default Value is 6AM - 6:00 You can also specify multiple values 6:00,11:00,22:00

## jranner.properties

jranner.properties contains the Prizm Service installation & startup parameters.

Parameter	Default Value
jranner.java.command	Java Application. (Do not change this) java
jranner.java.mainclass	Java Main class. (Do not change this) com.ilfiron.JRunner
jranner.java.classpath.1	Add class path elements as needed starting from 1(Do not change this) proxyserver.jar
jranner.working.dir	working directory that is used after the jranner is initialized(Do not change this) ./
jranner.app.parameter.1	Application parameters. Add parameters as needed starting from 1(Do not change this) proxyconfig=../conf/proxyserver.jar.properties
jranner.java.initmemory	Initial Java Heap Size (in MB) Default Value is 30
jranner.java.maxmemory	Maximum Java Heap Size (in MB) Default Value is 1024
jranner.shutdown.timeout	Maximum timeout to wait for the process shutdown Default Value is 120
jranner.jvm_exit.timeout	Maximum timeout to wait for JVM to shutdown

	Default Value is 120
jranner.console.format	<p>Logging Properties Format of output for the CONSOLE.</p> <p>The format consists of the tokens 'L' for log level 'P' for prefix 'D' for thread 'T' for time 'Z' for millisecond time 'M' for message</p> <p>If the format contains these values then it will be included in the format. The order of the tokens does not affect the way the log appears, but the 'M' token should usually be placed last as it is the only column without a uniform width. If the property is missing or commented out, then the default value 'LPTM' will be used. Setting the property to a blank value will cause file logging to be disabled. Default value LPZM <i>Log are created under logs directory</i></p>
jranner.console.loglevel	<p>The Valid log levels are: NONE - no output messages at all FATAL - show fatal error messages only ERROR - show all error messages STATUS - show all state changes INFO - shows all JVM output and informative messages DEBUG - shows detailed debug information</p> <p>The default value is INFO <i>Log are created under logs directory</i></p>
jranner.logfile	<p>Log file to use for jRunner output logging. Either relative to jranner.working.dir or full path. Default Value is ../logs/proxyserver.log</p>
jranner.logfile.maxsize	<p>Maximum size that the log file will be allowed to grow to before the log is rolled. Size is specified in bytes. The default value of 0, disables log rolling. May abbreviate with the 'k' (kb) or 'm' (mb) suffix. For example: 10m = 10 megabytes. Default Value is 0</p>
jranner.logfile.maxfiles	<p>Maximum number of rolled log files which will be allowed before old files are deleted. The default value of 0 implies no limit.</p>
jranner.syslog.loglevel	<p>Log Level for sys/event log output. Default value is NONE</p>
jranner.console.title	<p>Title to use when running as a console Default value 'Convert2SWF Proxy Server Console'</p>
jranner.ntservice.name	<p>Name of the service Convert2SWFSvc</p>
	<p>Display name of the service jranner.ntservice.displayname=Prizm</p>
jranner.ntservice.description	<p>Description of the service Run Convert2SWF Proxy Server Service helper for converting documents to SWF format</p>
jranner.ntservice.dependency.1	<p>Service dependencies. Add dependencies as needed starting from 1 Default Value is blank</p>
jranner.ntservice.starttype	<p>Mode in which the service is installed. AUTO_START or DEMAND_START AUTO_START</p>
jranner.ntservice.interactive	<p>Allow the service to interact with the desktop. Default value is false</p>

## Distributed Configuration Set Up

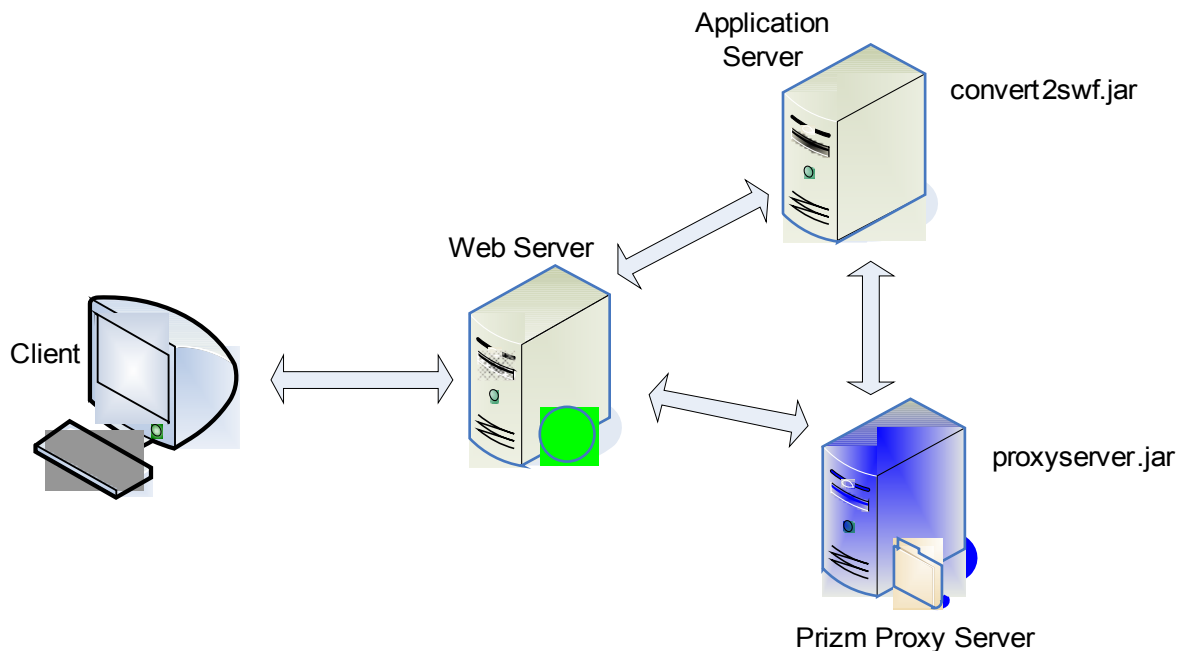
Prizm Content Connect Plus can be configured in a distributed environment set up to achieve higher conversion rates. Prizm Proxy Server serves as a conversion server and runs Open Office. proxyserver.jar resides on Prizm Proxy Server and does the conversion of documents. convert2swf.jar resides on Application Server and connects to the Prizm Proxy Server for conversion.

### Steps to set up Prizm Content Connect Plus in Distributed mode:

- 1) Install Prizm Application on Proxy Server. Stop the proxyserver service from scripts
- 2) Open conf directory and then proxyserver config file. Replace all occurrences of "localhost" with ip address of the server
- 3) Start the proxyserver service from scripts

You can now access the conversion service from other server like this  
<http://<ipaddress>:18680/>

192.168.0.1:18580 is the IP Address of the Proxy Server and 18580 is the port at which Proxy Server is running  
source is the location of file on Application Server



**Distributed Configuration**