

# **Prizm Content Connect Developer Guide for Linux**

**Version 5.0**

Published Feb 2012

Accusoft believes the information in this publication is accurate as of its publication date. The information is subject to change without notice.

THE INFORMATION IN THIS PUBLICATION IS PROVIDED AS IS. WE MAKES NO REPRESENTATIONS OR WARRANTIES OF ANY KIND WITH RESPECT TO THE INFORMATION IN THIS PUBLICATION, AND SPECIFICALLY DISCLAIMS IMPLIED WARRANTIES OF MERCHANTABILITY OR FITNESS FOR A PARTICULAR PURPOSE.

Use, copying, and distribution of any software described in this publication requires an applicable software license.

For the most up-to-date listing of product names, see [www.accusoft.com](http://www.accusoft.com).

All other trademarks used herein are the property of their respective owners.

## Attributions, Notices & Copyrights

---

Apache PDFBox (<http://pdfbox.apache.org/>)  
Copyright 2002-2010 The Apache Software Foundation  
Download: <http://pdfbox.apache.org/download.html>  
License: <http://www.apache.org/licenses/LICENSE-2.0>

Apache FontBox (<http://pdfbox.apache.org/>)  
Copyright 2008-2010 The Apache Software Foundation  
Download: <http://pdfbox.apache.org/download.html>  
License: <http://www.apache.org/licenses/LICENSE-2.0>

Apache JempBox (<http://pdfbox.apache.org/>)  
Copyright 2008-2010 The Apache Software Foundation  
Download: <http://pdfbox.apache.org/download.html>  
License: <http://www.apache.org/licenses/LICENSE-2.0>

Apache POI (<http://poi.apache.org/>)  
Copyright 2001-2007 The Apache Software Foundation  
Download: <http://www.apache.org/dyn/closer.cgi/poi/>  
License: <http://www.apache.org/licenses/LICENSE-2.0>

Apache Commons FileUpload (<http://commons.apache.org/fileupload/>)  
Copyright 2002-2008 The Apache Software Foundation  
Download: [http://commons.apache.org/fileupload/download\\_fileupload.cgi](http://commons.apache.org/fileupload/download_fileupload.cgi)  
License: <http://www.apache.org/licenses/LICENSE-2.0>

Apache Commons IO (<http://commons.apache.org/io/>)  
Copyright 2001-2008 The Apache Software Foundation  
Download: [http://commons.apache.org/io/download\\_io.cgi](http://commons.apache.org/io/download_io.cgi)  
License: <http://www.apache.org/licenses/LICENSE-2.0>

Apache Commons Lang (<http://commons.apache.org/lang/>)  
Copyright 2001-2010 The Apache Software Foundation  
Download: [http://commons.apache.org/lang/download\\_lang.cgi](http://commons.apache.org/lang/download_lang.cgi)  
License: <http://www.apache.org/licenses/LICENSE-2.0>

Apache Commons Logging (<http://commons.apache.org/logging/>)  
Copyright 2003-2007 The Apache Software Foundation  
Download: [http://commons.apache.org/logging/download\\_logging.cgi](http://commons.apache.org/logging/download_logging.cgi)  
License: <http://www.apache.org/licenses/LICENSE-2.0>

Java Advanced Imaging API (<http://java.sun.com/javase/technologies/desktop/media/jai/>)  
Copyright (c) 2006 Sun Microsystems, Inc., 4150 Network Circle, Santa Clara, California 95054, U.S.A. All rights reserved.  
Download: [http://download.java.net/media/jai/builds/release/1\\_1\\_3/](http://download.java.net/media/jai/builds/release/1_1_3/)  
License: [http://download.java.net/media/jai/builds/release/1\\_1\\_3/LICENSE-jai.txt](http://download.java.net/media/jai/builds/release/1_1_3/LICENSE-jai.txt)

Java Advanced Imaging Image I/O Tools  
(<http://java.sun.com/javase/technologies/desktop/media/>)  
Copyright (c) 2006 Sun Microsystems, Inc., 4150 Network Circle, Santa Clara, California 95054, U.S.A. All rights reserved.  
Download: <http://download.java.net/media/jai-imageio/builds/release/1.1/>  
License: [http://download.java.net/media/jai-imageio/builds/release/1.1/LICENSE-jai\\_imageio.txt](http://download.java.net/media/jai-imageio/builds/release/1.1/LICENSE-jai_imageio.txt)

JavaMail 1.4.3 (<http://www.oracle.com/technetwork/java/javamail/index.html>)  
Copyright © 2009 Sun Microsystems, Inc., 4150 Network Circle, Santa Clara, California 95054, U.S.A. All rights reserved.

Download: <http://www.oracle.com/technetwork/java/javamail/index-138643.html>  
License: [http://download.oracle.com/otn-pub/java/licenses/javamail-1.4.3-oth-JPR\\_license\\_1.html](http://download.oracle.com/otn-pub/java/licenses/javamail-1.4.3-oth-JPR_license_1.html)

#### JDOM

This product includes software developed by the JDOM Project (<http://www.jdom.org/>).  
Copyright (C) 2000-2004 Jason Hunter & Brett McLaughlin. All rights reserved.  
Source: <http://www.jdom.org/downloads/source.html>  
Download: <http://www.jdom.org/downloads/index.html>  
License: <install path>/Convert2swf/licenses/jdom/LICENSE.txt  
(<http://www.jdom.org/docs/faq.html#a0030>)

JRE 1.6.0.26 (<http://www.oracle.com/technetwork/java/javase/downloads/index.html>)  
Copyright © 2006, 2011, Oracle and/or its affiliates. All rights reserved.  
Download: <http://www.oracle.com/technetwork/java/javasebusiness/downloads/java-archive-downloads-javase6-419409.html#jre-6u26-oth-JPR>  
License: <http://www.oracle.com/technetwork/java/javase/terms/license/index.html>

ODF Converter (<http://katana.ooninja.com/w/odf-converter-integrator>)  
Copyright (c) 2006, Clever Age. All rights reserved.  
Download: <http://katana.ooninja.com/f/software/odf-converter-integrator-0.2.3-1.i386.rpm>  
License: BSD-like license (<install path>/licenses/OdfConverter/license.txt)  
Implementation/Integration: This open source product has not been recompiled and a call to binary file (OdfConverter) is directly made from the code, keeping the binaries totally separate from the Prizm Source Code.

String Search (<http://johannburkard.de/software/stringsearch/>)  
StringSearch - high-performance pattern matching algorithms in Java  
Copyright (c) 2003-2010 Johann Burkard  
Download: <http://johannburkard.de/software/stringsearch/>  
License: <http://johannburkard.de/software/stringsearch/copying.txt>

The Legion of the Bouncy Castle  
Copyright (c) 2000-2009 The Legion Of The Bouncy Castle (<http://www.bouncycastle.org>)  
Download: [http://bouncycastle.org/latest\\_releases.html](http://bouncycastle.org/latest_releases.html)  
License: <http://www.bouncycastle.org/licence.html>

JTNEF (<http://www.freeutils.net/source/jtnef/>)  
The JTNEF package used in this product is copyright (c) 2003-2010 by Amichai Rothman.  
JavaBeans Activation Framework  
(<http://www.oracle.com/technetwork/java/javase/downloads/index-135046.html>)  
Download: <http://www.oracle.com/technetwork/java/javasebusiness/downloads/java-archive-downloads-java-plat-419418.html#jaf-1.1-fr-oth-JPR>  
License: [http://download.oracle.com/otn-pub/java/licenses/jaf-1.1-mrel-spec-oth-JPR\\_license\\_1.html](http://download.oracle.com/otn-pub/java/licenses/jaf-1.1-mrel-spec-oth-JPR_license_1.html)

SWF Tools (<http://www.swftools.org>)  
Source: <install path>/src/SWFTools/0.9.0/  
Source: <install path>/src/SWFTools/0.9.1/  
License (GPL v2): <install path>/Convert2swf/licenses/SWF Tools/COPYING  
Implementation/Integration: This open source product has not been recompiled and a call to binary file is directly made from the code, keeping the binaries totally separate from the Prizm Source Code.

Tanuki Java Service Wrapper (<http://www.tanukisoftware.com>)  
Copyright (C) 1999, 2010 Tanuki Software, Ltd. All rights reserved.  
The Software Program includes software and documentation components developed in part by Silver Egg Technology, Inc. ("SET") prior to 2001 and released under the following license.

Copyright (c) 2001 Silver Egg Technology  
Permission is hereby granted, free of charge, to any person obtaining a copy of this software and associated documentation files (the "Software"), to deal in the Software without restriction, including without limitation the rights to use, copy, modify, merge, publish, distribute, sub-license, and/or sell copies of the Software, and to permit persons to whom the Software is furnished to do so, subject to the following conditions:

The above copyright notice and this permission notice shall be included in all copies or substantial portions of the Software.

The Linux Server component of the Program also uses the following software, installed separately:

ImageMagick (<http://www.imagemagick.org>)  
OpenOffice.org (<http://www.openoffice.org/>)

GraphicsUtil (<http://www.dncompute.com/blog/2008/07/17/graphicsutil-a-utility-class-for-drawing-arrows.html>)  
Copyright (c) 2008 Noel Billig ([www.dncompute.com](http://www.dncompute.com))  
Download: <http://www.dncompute.com/blog/2008/07/17/graphicsutil-a-utility-class-for-drawing-arrows.html>  
License: MIT (in source)

URL Validator (<http://ctrloptcmd.com/archives/587/actionsript-3-url-validator-class/>)  
Copyright 2009 Martin Jacobsen  
Download: <http://ctrloptcmd.com/as3/URLValidator.as>  
License: (in source)

jQuery (<http://jquery.org/>)  
Copyright (c) 2011 John Resig  
Download: [http://docs.jquery.com/Downloading\\_jQuery](http://docs.jquery.com/Downloading_jQuery)  
License: <http://jquery.org/license/>

Lazy Load - jQuery plugin for lazy loading images (<http://www.appelsiini.net/projects/lazyload>)  
Copyright (c) 2007-2009 Mika Tuupola  
Download: <http://www.appelsiini.net/projects/lazyload>  
License: <http://www.opensource.org/licenses/mit-license.php>

jQuery.ScrollTo (<http://plugins.jquery.com/project/ScrollTo>)  
Copyright (c) 2007-2009 Ariel Flesler  
Download: <http://plugins.jquery.com/node/635/release>  
License: MIT (in source)

ScrollView - jQuery plugin (<http://code.google.com/p/jquery-scrollview/>)  
Copyright (c) 2009 Toshimitsu Takahashi  
Download: <http://code.google.com/p/jquery-scrollview/downloads/detail?name=jquery.scrollview.js&can=2&q=>  
License: <http://www.opensource.org/licenses/mit-license.php>

Viewport - jQuery selectors for finding elements in viewport (<http://www.appelsiini.net/projects/viewport>)

Copyright (c) 2008-2009 Mika Tuupola  
Download: <http://www.appelsiini.net/projects/viewport>  
License: <http://www.opensource.org/licenses/mit-license.php>

transform: A jQuery cssHooks adding cross-browser 2d transform capabilities to \$.fn.css() and \$.fn.animate()

(<https://github.com/louisremi/jquery.transform.js>)  
Copyright 2011 @louis\_remi  
Download: <https://github.com/louisremi/jquery.transform.js>  
License: MIT (<https://github.com/louisremi/jquery.transform.js>)

jQuery UI (<http://jqueryui.com/>)  
Copyright (c) 2011 Paul Bakaus  
Download: <http://jqueryui.com/download>  
License: <http://jquery-ui.googlecode.com/svn/tags/latest/MIT-LICENSE.txt>

jquery.waitforimages (<http://alexanderdickson.com/blog/2011/02/a-new-jquery-plugin-2/>)  
Copyright (c) 2011 Alex Dickson  
Download: <https://github.com/alexanderdickson/waitForImages>  
License: <https://github.com/alexanderdickson/waitForImages/blob/master/README.md>

jQuery Context Menu Plugin (<http://abeautifulsite.net/blog/2008/09/jquery-context-menu-plugin/>)  
Copyright A Beautiful Site, LLC  
Download: <http://abeautifulsite.net/blog/2008/09/jquery-context-menu-plugin/>  
License: MIT (in source)

jqprint (<http://plugins.jquery.com/project/jqPrint>)  
Provided by Eros Fratini - [eros@recoding.it](mailto:eros@recoding.it)  
Download: <http://plugins.jquery.com/node/8069/release>  
License: <http://www.opensource.org/licenses/mit-license.php>

jQuery Patch (<http://www.zachstronaut.com/posts/2009/08/07/jquery-animate-css-rotate-scale.html>)  
2009-2010 Zachary Johnson [www.zachstronaut.com](http://www.zachstronaut.com)  
Download: <https://github.com/zachstronaut/jquery-animate-css-rotate-scale/>  
License: MIT (<https://github.com/zachstronaut/jquery-animate-css-rotate-scale/blob/master/README>)

Google Translate API for .NET (<http://code.google.com/p/google-api-for-dotnet/>)  
Copyright (c) 2008-2009 iron9light  
Download: <http://code.google.com/p/google-api-for-dotnet/downloads/list>  
License: <http://www.opensource.org/licenses/mit-license.php>  
Other Terms: <http://code.google.com/apis/language/translate/terms.html>

SWFObject (<http://code.google.com/p/swfobject/>)  
Provided by [code.google.com](http://code.google.com)  
Download: <http://code.google.com/p/swfobject/downloads/list>  
License: <http://www.opensource.org/licenses/mit-license.php>

# Preface

---

This document describes how to integrate and use Prizm Content Connect with your application.

## Intended Audience

The audience of this manual is intended to be developers who are familiar with Java, Java Script, & overall Linux OS.

## Revision History

The following changes have been made to this document.

---

Revision History	Revision Date	Description
------------------	---------------	-------------

Oct 11		Draft for version 4.6.3
Feb 12		Draft for version 5.0

# Table of Contents

---

<b>INTENDED AUDIENCE.....</b>	<b>7</b>
<b>REVISION HISTORY.....</b>	<b>7</b>
<b>TABLE OF CONTENTS.....</b>	<b>8</b>
<b>CHAPTER 1.....</b>	<b>9</b>
<b>HOW DOES THE VIEWER WORK?.....</b>	<b>9</b>
<b>CHAPTER 2.....</b>	<b>11</b>
<b>COMPONENTS &amp; COMMAND LINE SYNTAX.....</b>	<b>11</b>
CONVERT2SWFCLIENT.JAR.....	11
PROXYSERVER.JAR - PRIZM PROXY SERVICE.....	14
STARTING THE PROXY SERVER.....	14
<b>CHAPTER 3.....</b>	<b>15</b>
<b>DOCUMENT CONVERSION PROXYWEBSERVICE.....</b>	<b>15</b>
SETUP PROXY SERVICE ON PORT OTHER THAN 18680.....	17
<b>CHAPTER 5.....</b>	<b>19</b>
<b>INTEGRATION WITH YOUR APPLICATION.....</b>	<b>19</b>
JSP SAMPLE CODE.....	19
PHP SAMPLE CODE.....	20
<b>CHAPTER 6.....</b>	<b>21</b>
<b>CUSTOMIZING THE VIEWER.....</b>	<b>21</b>
<b>CHAPTER 7.....</b>	<b>26</b>
<b>EVENTS TO/FROM VIEWER.....</b>	<b>26</b>
<b>CHAPTER 8.....</b>	<b>29</b>
<b>LOCALIZING THE VIEWER.....</b>	<b>29</b>
<b>CHAPTER 9.....</b>	<b>30</b>
<b>GENERATING THUMBNAILS.....</b>	<b>30</b>
<b>CHAPTER 10.....</b>	<b>31</b>
<b>GENERATING IMAGES.....</b>	<b>31</b>
<b>CHAPTER 11.....</b>	<b>32</b>
<b>EXTRACTING TEXT.....</b>	<b>32</b>
<b>CHAPTER 12.....</b>	<b>33</b>
<b>CLIENT SIDE FLASH DETECTION.....</b>	<b>33</b>
<b>CHAPTER 14.....</b>	<b>34</b>
<b>ERROR CODES &amp; EXCEPTION HANDLING.....</b>	<b>34</b>
<b>CHAPTER 15.....</b>	<b>35</b>

<b><u>FINE TUNING THE PRIZM APPLICATION</u></b>	<b>35</b>
<b><u>CHAPTER 16.....</u></b>	<b>38</b>
<b><u>DISTRIBUTED CONFIGURATION SET UP.....</u></b>	<b>38</b>
	39
<b><u>CHAPTER 17.....</u></b>	<b>39</b>
<b><u>TROUBLESHOOTING</u></b>	<b>39</b>

## Chapter 1

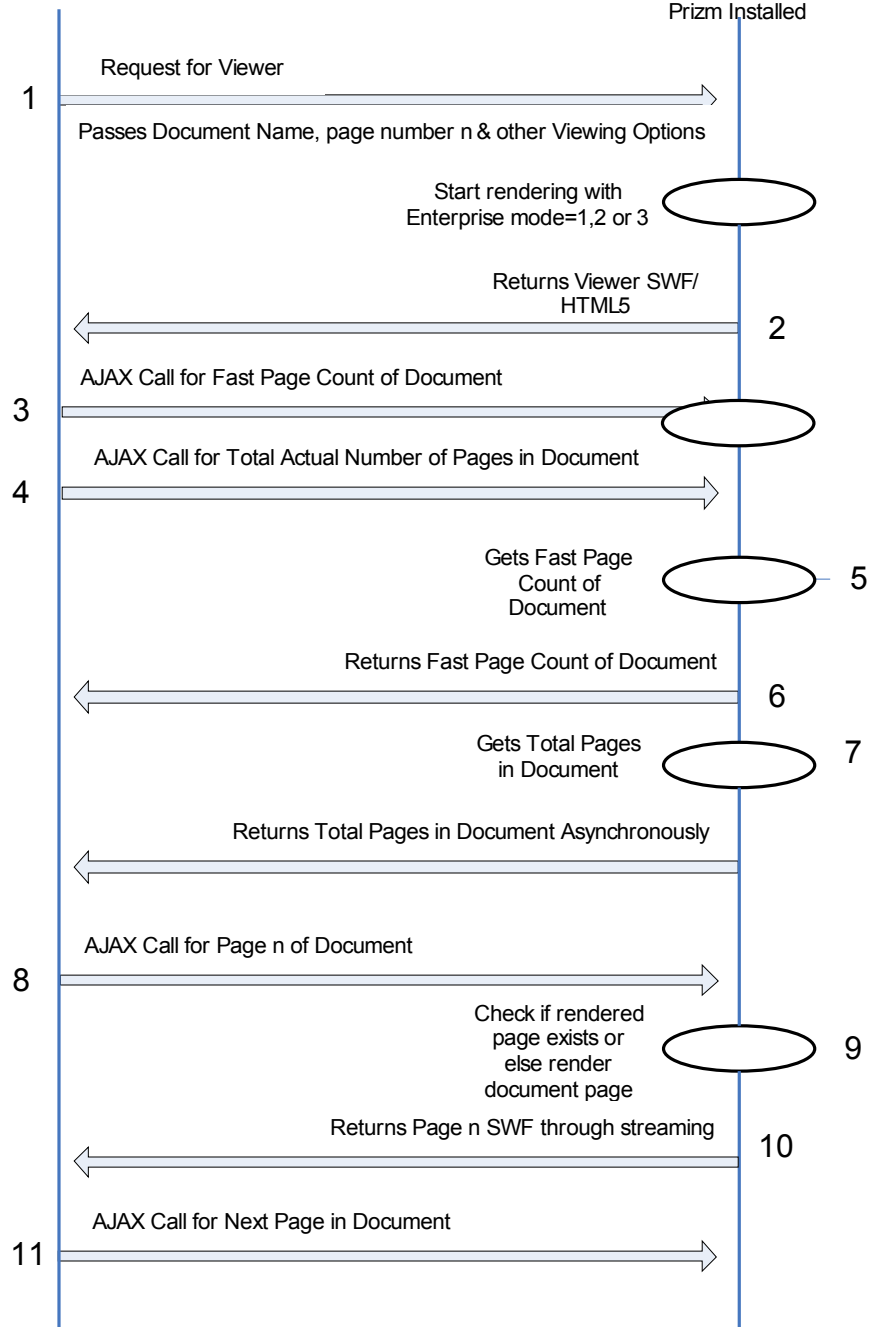
### How Does the Viewer Work?

Prizm Content Connect uses a combination of Flex, Flash & AJAX technology to render the documents. Here are steps which show in detail how the viewer works:

- Step 1** – A request is sent from client browser for a document, including start page and document viewing options
- Step 2** – Server returns a swf file
- Step 3** – Viewer loads on client side and makes an AJAX call for Fast Page Count
- Step 4** – Viewer makes an AJAX call for Actual Total Page Count
- Step 5** – Fast Page Count of document is calculated on server
- Step 6** – Server returns Fast Page Count of Document
- Step 7** – Total Page Count of document is calculated on server and returned asynchronously. (Fast Page is calculated synchronously to reach step 8 quickly, and actual page count is returned asynchronously)
- Step 8** – Viewer makes an AJAX call for page n of the document
- Step 9**– Conversion File on the server gets the document name and page number and converts page n in the document to swf file
- Step 10** – Conversion File returns the generated swf file in a stream for viewer to display
- Step 11** – Viewer makes an AJAX call for the next page of the document

Client Browser  
Flash/HTML5  
UI Frontend

Web Server  
Web server with App  
Server, File server and  
Prizm Installed



### Components & Command Line Syntax

Prizm installs various components & utilities which work together to do the conversion. Here are some of the main components and & files which perform specific functions

Components/Utilities	Description	Location
<b>convert2swf.jar</b>	Performs actual conversion of documents	Installation Directory <installpath>
<b>convert2swfclient.jar</b>	Makes a call to convert2swf.jar for conversion. Can be on a different machine in 3 tier installation mode	Installation Directory <installpath>
<b>proxyserver.jar</b>	Proxy Server which manages conversion and performs load balancing	<installpath>\bin
<b>convert2swf_proxy.properties</b>	Properties file required by Proxy Server proxyserver.jar	<installpath>\conf
<b>jrunner.properties</b>	Properties file required by utility jrunner  jrunner-linux-x86-32.properties for 32 bit Linux OS jrunner-linux-x86-64.properties for 64 bit Linux OS	<installpath>\conf
<b>proxyserver.log</b>	Log file generated by Proxy Server proxyserver.jar	<installpath>\logs
<b>Service Start Up/Install Scripts</b>	Scripts which call jrunner and are provided for easier start/stop of Prizm Proxy Service	<installpath>/scripts
<b>ViewerEnterprise.swf</b>	Viewer file which contains viewer logic and makes AJAX calls to other files	<installpath> or <installpath>\SampleCode
<b>settingsenterprise.xml</b>	Settings file used by ViewerEnterprise.swf and contains conversion file name	<installpath> or <installpath>\SampleCode

#### ***convert2swfclient.jar***

Note- convert2swf.jar is deprecated and remains for backwards compatibility only. For new installations, always use convert2swfclient.jar.

convert2swfclient.jar is a Java-based Jar file that provides methods to convert your documents to swf format to be used by the Viewer file. This jar file can only be run if Proxy Server is running.

To run this utility simply type *java -jar convert2swfclient.jar*. Recommended way is to always call *convert2swfclient.jar*

**Usage:** `java -jar convert2swfclient.jar argument1=value1 argument2=value2 ...`

**Argument list:**

ooserver	OpenOffice.org server hostname:port
proxyserver	Convert2SWF Proxy server hostname:port
source	source file path
target	target directory or target file path if target is empty, the result is saved to the source directory
log	log file path, if not specified all logging goes to a terminal
pages	indicates the range of pages to be printed, semicolon separated ex.: to print all pages, beginning from 2nd: 2- to print 1st, 3rd, and 5th page: 1;3;5 to print first 10 pages: 1-10 to print 1st, 2nd and a range from 10 to 20: 1;2;10-20 to print 2nd, and the rest from 10th: 2;10
openpass	password that allows the user to open the PDF file, enclose the value in double-quotes if you want to use space(s) ex.: openpass=hj1uLWI openpass="Best Converter 2 PDF and PNG"
optimize	specifies the optimization level (0, 1, 2)
embedfonts	embeds fonts in png for a better search in png (Default No:0) (Values= 0 or 1)
ignoreswferrors	forces swf conversion (Default No: 0) (Values= 0 or 1)
totalpages	returns the number of the pages in document (returns accurate total number of pages but requires more processing time)
fastpgcnt	returns the number of pages in the document (faster but less accurate - use totalpages for actual page count)
pagesize	Used when converting tiff image, possible values: a4 - resize the result pages to A4 (210 x 297 mm) (default) letter - resize the result pages to Letter (8,5 x 11") original - keep the original size of the pages
modulesdir	directory to be used for modules and interprocess communication (by default this directory exists in the installation directory)
pagetype	used when converting multi-page tiff images, possible values: a4 - resize the result pages to A4 (210 x 297 mm) letter - resize the result pages to Letter (8,5 x 11") original (default) - keep the original size of the pages
pdfdensity	used when converting encrypted pdf documents (Default: 100)
fidelity	the factor which will make docx, xlsx and pptx documents appear exactly same as original; setting fidelity as 'high' means more time spent for conversion (default: high)
convtimeout	maximum time to wait for the conversion to be done (in seconds)(used for large files). Use 0 to wait for infinite time, default: 660 seconds
thumbnail	specifies thumbnail image width and height, e.g.: 150x200. Only used for creating thumbnails in png format of document pages
customerid	customer id used for licensing and activation
regkey	registration key used for licensing and activation
monochrome	create grayscale TIFF images (monochrome= 1)
getattachments	get attachment list for msg formats (getattachments= 1)

extractattachments	extract attachments from msg formats (extractattachments= 1)
xlsfidelity	suppress the XLS pre-processing of one page per sheet. (Default: High) (Values: low/high)
showFullscreenNotice	Allows the fullscreen keyboard events notice to not be displayed if set to No. (Default=Yes)
srcencoding	specifies the text import filter parameters for text files. (only for .txt and .text files) For Korean files srcencoding would be: srcencoding=EUC_KR,CRLF,Times New Roman,ko-KR where: EUC_KR is the encoding, complete list is here: <a href="http://docs.python.org/release/2.4.2/lib/standard-encodings.html">http://docs.python.org/release/2.4.2/lib/standard-encodings.html</a> CRLF is the line ending character (either: CR, LF, CRLF) Times New Roman is the default font used ko-KR is the language encoding
dpi	specifies depth per index ratio of output png and image files Default:100

**Example 1:**

To convert sample.doc to sample.swf having Proxy Server running on 18580 in Demo Mode:  
java -jar convert2swfclient.jar source=sample.doc

**Example 2:**

To convert page 1 only of sample.doc to sample.swf:  
java -jar convert2swfclient.jar pages=1 source=sample.doc

**Example 3:**

To convert pages 1,5,7 only of sample.doc to sample.swf having Proxy Server running on 18580:  
java -jar convert2swfclient.jar pages=1,5,7 source=sample.doc

**Example 4:**

To get total pages in sample.doc:  
java -jar convert2swfclient.jar totalpages source=/usr/local/temp/sample.doc

**Example 5:**

To get fast page count in sample.doc:  
java -jar convert2swfclient.jar source=sample.doc  
fastpgcnt – gets total pages in the document quickly but might not always be as accurate as totalpages

**Example 6:**

To create a thumbnail of page 1 of sample.doc:  
java -jar convert2swfclient.jar source=sample.doc thumbnail=100x100 pages=1

**Example 7:**

To create a thumbnail of all pages of sample.doc:  
java -jar convert2swfclient.jar source=sample.doc thumbnail=100x100

**Note:** If the registration information is not valid or empty, the library runs in demo mode. Some features are limited.

**Note:** For unregistered products or in trial mode, the Convert2SWF runs in trial mode and produces a DEMO watermark on converted documents.

## ***proxyserver.jar - Prizm Proxy Service***

Prizm proxy service is required for convert2swf utility to run. This service is installed and started during the installation process.

**convert2swf\_proxy.properties** contains the parameters and port information needed for Prizm Proxy Service to run and is located in <installpath>/conf directory.

### ***Starting the Proxy Server***

Start the server using the following command

```
./<install>/scripts/proxyserver.sh start
```

You can also stop and check status of proxyserver using following commands

```
./<install>/scripts/proxyserver.sh stop
```

```
./<install>/scripts/proxyserver.sh status
```

To see the log files, check:

```
<install>/logs/proxyserver.log
```

You can also run proxyserver in a console

- run

```
<install>/scripts/proxyserver.sh console
```

to run the proxyserver in a console mode.

<b>Parameter</b>	<b>Value</b>
tempLocationURL	Webserver Link for above tempLocation
conversionFileURL	Exact url of the file which will take care of ajax calls and perform the conversion
getTotalPagesURL	Exact url of the file which will return total pages of the document
getFastPagesURL	Exact url of the file which will return fast page count of the document

## Chapter 3

### Document Conversion ProxyWebservice

Prizm has a built in HTTP & HTTPS WebServer which serves the document conversion requests and does load balancing and various other tasks.

By default, after complete installation you can check if the Prizm HTTP WebServer is running by typing in browser

<http://localhost:18680/convert2swf>

convert2swf Webservice by default is setup to run on port 18680 and in http mode.

#### Usage:

ooserver	OpenOffice.org server hostname:port
proxyserver	Convert2SWF Proxy server hostname:port
source	source file path
target	target directory or target file path if target is empty, the result is saved to the source directory
log	log file path, if not specified all logging goes to a terminal
pages	indicates the range of pages to be printed, semicolon separated ex.: to print all pages, beginning from 2nd: 2- to print 1st, 3rd, and 5th page: 1;3;5 to print first 10 pages: 1-10 to print 1st, 2nd and a range from 10 to 20: 1;2;10-20 to print 2nd, and the rest from 10th: 2;10
openpass	password that allows the user to open the PDF file, enclose the value in double-quotes if you want to use space(s) ex.: openpass=hj1uLWI openpass="Best Converter 2 PDF and PNG"
optimize	specifies the optimization level (0, 1, 2)
embedfonts	embeds fonts in png for a better search in png (Default No:0) (Values= 0 or 1)
ignoreswferrors	forces swf conversion (Default No: 0) (Values= 0 or 1)
totalpages	returns the number of the pages in document (returns accurate total number of pages but requires more processing time)
fastpgcnt	returns the number of pages in the document (faster but less accurate - use totalpages for actual page count)
pagesize	Used when converting tiff image, possible values: a4 - resize the result pages to A4 (210 x 297 mm) (default) letter - resize the result pages to Letter (8,5 x 11") original - keep the original size of the pages
modulesdir	directory to be used for modules and interprocess communication (by default this directory exists in the installation directory)
pagetype	used when converting multi-page tiff images, possible values: a4 - resize the result pages to A4 (210 x 297 mm) letter - resize the result pages to Letter (8,5 x 11") original (default) - keep the original size of the pages
pdfdensity	used when converting encrypted pdf documents (Default: 100)

fidelity	the factor which will make docx, xlsx and pptx documents appear exactly same as original; setting fidelity as 'high' means more time spent for conversion (default: high)
convtimeout	maximum time to wait for the conversion to be done (in seconds)(used for large files). Use 0 to wait for infinite time, default: 660 seconds
thumbnail	specifies thumbnail image width and height, e.g.: 150x200. Only used for creating thumbnails in png format of document pages
customerid	customer id used for licensing and activation
regkey	registration key used for licensing and activation
monochrome	create grayscale TIFF images (monochrome= 1)
getattachments	get attachment list for msg formats (getattachments= 1)
extractattachments	extract attachments from msg formats (extractattachments= 1)
xlsfidelity	suppress the XLS pre-processing of one page per sheet. (Default: High) (Values: low/high)
showFullscreenNotice	Allows the fullscreen keyboard events notice to not be displayed if set to No. (Default=Yes)
srcencoding	specifies the text import filter parameters for text files. (only for .txt and .text files) For Korean files srcencoding would be: srcencoding=EUC_KR,CRLF,Times New Roman,ko-KR where: EUC_KR is the encoding, complete list is here: <a href="http://docs.python.org/release/2.4.2/lib/standard-encodings.html">http://docs.python.org/release/2.4.2/lib/standard-encodings.html</a> CRLF is the line ending character (either: CR, LF, CRLF) Times New Roman is the default font used ko-KR is the language encoding
dpi	specifies depth per index ratio of output png and image files Default:100

#### Example 1:

To convert sample.doc to sample.swf:

<http://localhost:18680/convert2swf?>

[source=/var/www/html/samplecode/sample.doc&target=/var/www/html/samplecode/sample.swf](http://localhost:18680/convert2swf?source=/var/www/html/samplecode/sample.doc&target=/var/www/html/samplecode/sample.swf)

#### Example 2:

To convert page 1 only of sample.doc to sample.swf:

<http://localhost:18680/convert2swf?source=/var/www/html/samplecode/sample.doc&pages=1>

#### Example 3:

To convert pages 1,5,7 only of sample.doc to sample.swf:

<http://localhost:18680/convert2swf?source=/var/www/html/samplecode/sample.doc&target=/var/www/html/samplecode/sample.swf&pages=1,5,7>

#### Example 4:

To get total pages in sample.doc:

<http://localhost:18680/convert2swf?source=/var/www/html/samplecode/sample.doc&totalpages>

#### Example 5:

To get fast page count in sample.doc:

<http://localhost:18680/convert2swf?source=/var/www/html/samplecode/sample.doc&fastpgcnt>

fastpgcnt – gets total pages in the document quickly but might not always be as accurate as totalpages

**Example 6:**

To convert sample.doc to sample.swf with http\_port set to 1111 and SSL enabled:

<https://localhost:1111/convert2swf?source=/var/www/html/samplecode/sample.doc&pages=1>

**Example 7:**

To create a thumbnail of page 1 of sample.doc:

[http://localhost:18680/convert2swf?](http://localhost:18680/convert2swf?source=/var/www/html/samplecode/sample.doc&thumbnail=100x100&pages=1)

[source=/var/www/html/samplecode/sample.doc&thumbnail=100x100&pages=1](http://localhost:18680/convert2swf?source=/var/www/html/samplecode/sample.doc&thumbnail=100x100&pages=1)

**Example 8:**

To create a thumbnail of all pages of sample.doc:

java -jar convert2swfclient.jar source=sample.doc thumbnail=100x150

[http://localhost:18680/convert2swf?](http://localhost:18680/convert2swf?source=/var/www/html/samplecode/sample.doc&thumbnail=100x150)

[source=/var/www/html/samplecode/sample.doc&thumbnail=100x150](http://localhost:18680/convert2swf?source=/var/www/html/samplecode/sample.doc&thumbnail=100x150)

***Setup proxy service on port other than 18680***

Open <install\_path>/conf/proxyserverconfiguration.config and change proxy\_port

After changing the http\_port, restart the proxyserver by using following commands

```
cd <install_path>/scripts
proxyserver.sh stop
proxyserver.sh start
```

**Setup proxy service to run on SSL https**

Following steps have to be done to achieve this:

1) Modify proxyserver\_jar.properties

Stop proxyserver

```
cd <install_path>/scripts
proxyserver.sh stop
```

```
cd <install_path>/config
```

Open proxyserverconfiguration.config

```
set http_ssl_enabled=true
```

2) Modify web.xml (Tomcat / JBoss Application - WAR, EAR)

(Only Applicable if you are using WAR or EAR provided in Sample Code)

(Ignore this step if you are not using the provided sample code WAR or EAR)

```
<param-name>proxyserver</param-name>
```

```
<param-value>https://localhost:18680</param-value>
```

3) Start the proxyserver

```
cd <install_path>/scripts
proxyserver.sh start
```

Check logs at <install\_path>/convert2swf/logs/proxyserver.log

SSL mode is denoted in proxyserver.log at initialization phase, e.g.:

```
INFO | jvm 1 | 2009/09/10 08:00:26 | http server ssl enabled : true
```

```
INFO | jvm 1 | 2009/09/10 08:00:26 | http server ssl keystore : /var/www/cgi-  
bin/convert2swf/bin/proxyserver_ssc.jks  
INFO | jvm 1 | 2009/09/10 08:00:26 | http server ssl password : *****  
:  
INFO | jvm 1 | 2009/09/10 08:00:38 | [ info ] [https-server] starting...  
INFO | jvm 1 | 2009/09/10 08:00:38 | [ info ] [https-server] adding to the pool: worker-0  
INFO | jvm 1 | 2009/09/10 08:00:39 | [ info ] [https-server] binded to: ssl  
socket,host=localhost,port=18680
```

and with each client request, e.g.:

```
INFO | jvm 1 | 2009/09/10 08:00:56 | [ info ] [https-server] [worker-0] handling client  
request
```

### **Doing Conversions in SSL Mode**

Specify proxyserver parameter

Calling convert2swfclient.jar has to contain proxyserver parameter that specifies the https protocol, host and port, e.g.:

```
java -jar convert2swfclient.jar proxyserver=https://localhost:18680 source=sample.doc
```

or

When using proxyserver conver2swf service

<https://localhost:18680/convert2swf?source=/var/www/html/samplecode/sample.doc&pages=1>

### **What is proxyserver\_ssc.jks?**

This file is so called "keystore". It is necessary for SSL handshake phase and data encryption. proxyserver\_ssc.jks contains self-signed certificate that is intended to be used in trusted environments (difficult to tamper), such as localhost or intranets.

To print the content of the keystore you may use following command:

```
"Java/jdk1.6.0_16/bin/keytool" -list -v -keystore  
<installpath>/convert2swf/bin/proxyserver_ssc.jks -storepass "password"
```

### Integration with Your Application

Prizm supports real time processing of documents and be integrated with your existing applications. This allows you to not only convert your documents to PDF format and allow your users to download them in PDF format but also to convert them into SWF format with an easy to use full featured viewer.

**After you have installed the Prizm Application, these files are required in your code for complete integration:**

#### Viewer File

This is the file which calls the Viewer.swf and passes document location along with Viewer display properties.

#### Viewer.swf file

The file containing the logic for viewing the documents. Viewer.swf makes ajax calls to Conversion File mentioned below.

#### settings.xml file

settings.xml file is used by Viewer.swf and contains location for a temp directory where swf file will be generated and conversion file url.

For php sample code, settings.xml would look like this:

```
<settings>
<conversionFileURL> convert.php</conversionFileURL>
</settings>
```

#### Conversion File

Conversion file is called from Viewer.swf and performs actual conversion. Conversion File is assumed by default to be on same domain as Viewer.swf. Conversion file accepts document as a form POST parameter and returns generated SWF file name.

**Arguments:** *fileName*

**Returns:** *SWFFile=generatedfile.swf*

*Or SWFFile=Error (in case of error or other problems)*

### JSP Sample Code

Download the JSP sample code

#### Installation

Extract zip into a temporary folder.

eclipse-workspace

Contains complete Eclipse project workspace for developing and debugging the JSPs and for building WAR and EAR packages.

### **Windows**

Contains EAR and WAR web application packages intended to be deployed on Windows environment.

### **Linux**

Contains EAR and WAR web application packages intended to be deployed on Linux environment.

The EAR and WAR packages has been tested with:

JBoss 4.2.3

Apache Tomcat 5.0.27

Oracle Application Server 10.1.2.0.2

Oracle WebLogic Server 10.3

## ***PHP Sample Code***

Download the PHP sample code

### **Installation**

Unzip the tar into your www directory and try browsing <http://localhost/index.php>

## Customizing the viewer

Prizm is fully customizable and you can not only switch the various buttons on and off on the viewer, but also add up to 3 custom buttons.

Your custom code needs to appear as 'FlashVars' param variable so that it can be passed to the flash file at run time.

There are several ways to embed flash into a web page. Prizm Viewer can support all of those methods.

Here are some of flash embed examples:

1) Basic Embed using Embed & Object Tags (using AC\_RunActiveContent.js)  
[http://kb2.adobe.com/cps/127/tn\\_12701.html](http://kb2.adobe.com/cps/127/tn_12701.html)

2) Using SWF Objects  
<http://code.google.com/p/swfobject/>

3) Using JQuery SWF Object Plugin  
<http://jquery.thewikies.com/swfobject/>

Given below is an example with code showing SWF Objects.

```
<script src="swfobject.2.2.js" language="javascript"></script>
<script type="text/javascript">
  var params = {
    wmode: 'opaque',
    scale: 'noscale',
    allowFullScreen: true,
    allowScriptAccess: 'always',
    bgcolor: '#ffffff'
  };
  var attributes = {
    id: 'viewer',
    name: 'viewer'
  };
  var flashvars = {
    documentname: '<? echo $document; ?>',
    saveDocumentLocation: 'savedocument.php'
  };
  swfobject.embedSWF("Viewer.swf<? echo time();?>", "documentviewer", "620", "800", "10.0.0",
false, flashvars, params, attributes);
</script>
<noscript>
Javascript needs to be enabled to view the document in viewer.
</noscript>
<div id="documentviewer"></div>
```

### Prizm Flash Document Variables

Name	Description	Default	Values
------	-------------	---------	--------

		<b>Value</b>	
startPage	Page which should load when viewer opens	1 (Required)	1 to any. Cannot have value as 0 or any alphanumeric digits or negative numbers.
navButton	Display Previous Next Buttons along with Current & Total Page Numbers	Yes	Yes/No
zoomButton	Displays Zoom In, Zoom Out buttons along with Zoom Slider.	Yes	Yes/No
saveButton	Displays Document Save button and points to the link mentioned in saveDocumentLocation		Yes/No When clicked opens the original document in new target window.
saveDocument	Displays Document Save button and points to the link mentioned in saveDocumentLocation		Yes/No When clicked opens the original document in new target window.  saveButton & saveDocument are same and serve the same purpose. Use either one of them.
saveDocumentLocation	Works with saveButton and points to original document or any other document rendition (such as pdf)		Link to the Original Document or pdf format of Original Document Example: <a href="http://www.testsite.com/documents/originaldoc.doc">http://www.testsite.com/documents/originaldoc.doc</a>
printButton	Display Document Print Button	Yes	Yes/No
rotationButton	Display Page Rotation Button	No	Yes/No
fittowidthButton	Displays Fit to Width Button	Yes	Yes/No
fullscreenButton	Displays Full Screen Button allowing the users to view the documents in full screen mode	Yes	Yes/No
copytextButton	Adds a copy to clipboard functionality on mouse right click	Yes	Yes/No
colorToolbar	Changes the background color of the toolbar	Default	Hex Code Value of the Colors
pagesToPreload	Pages that should be preloaded in buffer before Viewer starts displaying the documents	5 (Default)	1 to 5. Cannot have value as 0 or any alphanumeric digits or negative numbers.
tooltips	Show different language tooltip. (Refer to Localization of Viewer Chapter in this document for details)		xml document
settingsxml	Path to settings.xml		Use this only when you cannot put settings.xml in same folder as Viewer.swf or Viewer.swf cannot find settings.xml Settingsxml=temp/settings.xml
conversionLink	Path to conversion file url in the settings.xml		Use this only when you cannot put settings.xml in same folder as Viewer.swf or Viewer.swf cannot find settings.xml

			conversionLink =http://website/convert.php
keyboardButtons	Turn off all keyboard buttons. Keyboard buttons can be used to navigate the viewer.	Yes	keyboardButtons=No Turns off keyboard buttons and only mouse actions will be used.
mouseWheel	Turn off the mouse wheel. Mouse wheel is used to scroll the pages in viewer	Yes	Yes/No mouseWheel=No turns off the mouse wheel.
printQuality	Enhances the quality of the document when printed	Low	high/low printQuality=high allows printing high quality prints.
printAlternateMethod	Allows to set print areas differently	false	printAlternateMethod=true allows printing using a different algorithm. Recommended is false
toolbar	Turns the toolbar off. Hides the toolbar completely. All events and other variables continue to work	Yes	Yes/No Toolbar=No will hide the toolar.

## Custom Buttons Variables

Name	Description	Default Value	Values
customButton1Image	Graphics image that will be displayed as button		Any graphic image of type jpg, gif, png, bmp.  Should not be greater than 20x20 pixel size  Should be in same directory as swf file
customButton1Url	Link to the file that will be opened when user clicks on button		Link to any file on local or remote server.  Example : <a href="http://www.yahoo.com">http://www.yahoo.com</a>
customButton1Target	Target location when button is clicked		_blank/_top _blank opens the link in new window on button click _top opens the link in same window of viewer on button click
customButton2Image	Graphics image that will be displayed as button		Any graphic image of type jpg, gif, png, bmp.  Should not be greater than 20x20 pixel size  Should be in same directory as swf file
customButton2Url	Link to the file that will be opened when user clicks on button		Link to any file on local or remote server.  Example : <a href="http://www.yahoo.com">http://www.yahoo.com</a>
customButton2Target	Target location when button is clicked		_blank/_top _blank opens the link in new window on button click _top opens the link in same window of viewer on button click
customButton3Image	Graphics image that will be displayed as button		Any graphic image of type jpg, gif, png, bmp.  Should not be greater than

			20x20 pixel size  Should be in same directory as swf file
customButton3Url	Link to the file that will be opened when user clicks on button		Link to any file on local or remote server.  Example : <a href="http://www.yahoo.com">http://www.yahoo.com</a>
customButton3Target	Target location when button is clicked		_blank/_top _blank opens the link in new window on button click _top opens the link in same window of viewer on button click

## Search Variables

Name	Description	Default Value	Values
searchEnabled	Enable or Disable the document search	Yes (Enabled)	Yes/No Yes= Enabled No = Disabled
searchHighlightMode	Highlight all search keywords in document when searched or highlight just first one and show a option to jump to next keyword in document	HighlightModeSingle	HighlightModeSingle / HighlightModeAll  HighlightModeAll- disables the option to jump to next search keywords and will highlight all search keywords.
searchQueryDelimiter	Used for multiple search keywords		Can be any special character like   or \$ or # or * or @ or !. Avoid using & or % as special character
searchQuery	Load viewer with search keywords highlighted		Can be any keywords in the document.
highlightkeywordsxml	Load viewer with search terms from the xml file		highlightkeywordsxml=hightlightkeyword.xml
searchPanel	Hides the search panel	Yes	Yes/No searchPanel=No

**Example 1:** Loading Viewer with first "Magic" search keyword pre highlighted and then let user jump to next "Magic" keyword in document:

Search Variables: searchEnabled=Yes& searchHighlightMode= HighlightModeSingle& searchQuery=Magic

**Example 2:** Loading Viewer with all "Magic" search keywords pre highlighted:

Search Variables: searchEnabled=Yes& searchHighlightMode= HighlightModeAll& searchQuery=Magic

**Example 3:** Loading Viewer with all "Magic" and "States" search keywords pre highlighted:

Search Variables: searchEnabled=Yes&searchHighlightMode= HighlightModeAll& searchQueryDelimiter =|& searchQuery=Magic|States

**Example 4:** Loading Viewer with "Magic" and "United" search keywords pre highlighted and then let user jump through the highlighted keywords in document:

Search Variables: searchEnabled=Yes& searchHighlightMode= HighlightModeSingle& & searchQueryDelimiter =|searchQuery= Magic|United

**Example 5:** Disable search:

Search Variables: searchEnabled=No& searchHighlightMode= HighlightModeSingle& & searchQueryDelimiter =|searchQuery= Magic|United  
When searchEnabled is set to No, all other variables are ignored.

**Example 6:** Load search from xml:

Search Variables: highlightkeywordsxml=highlightkeyword.xml

**Highlightkeywordsxml syntax**

```
<pages>
  <page>
    <pagenumber>3</pagenumber>
    <keyword>and</keyword>
    <occurrence>all</occurrence>
  </page>
  <page>
    <pagenumber>4</pagenumber>
    <keyword>or</keyword>
    <occurrence>2</occurrence>
  </page>
  <page>
    <pagenumber>4</pagenumber>
    <keyword>advisory</keyword>
    <occurrence>1</occurrence>
  </page>
  <page>
    <pagenumber>1</pagenumber>
    <keyword>Influenza</keyword>
    <occurrence>1</occurrence>
  </page>
  <page>
    <pagenumber>5</pagenumber>
    <keyword>Avian</keyword>
    <occurrence>1</occurrence>
  </page>
</pages>
```

## Events to/from Viewer

Prizm Content Connect is built in such a way that it can be truly integrated and embedded into your application. Events are JavaScript AJAX calls that Viewer can generate when certain actions occur. Developers can also send JavaScript AJAX events to Viewer from their code and have Viewer perform certain actions without reloading the whole page.

### Sending events to Viewer

To send events to viewer you have to follow the following steps –

- 1) Pass a FlashVar to Viewer.swf to indicate you will be sending events to Viewer

```
sendViewerEvents=Yes
```

- 2) In your page where you call Viewer.swf, add the following code

```
<script language="JavaScript">
function getFlashMovie(movieName) {
    var isIE = navigator.appName.indexOf("Microsoft") != -1;
    return (isIE) ? window[movieName] : document[movieName];
}
function callViewerFunction(str,arg) {
    getFlashMovie("Viewer").sendTextToFlash(str,arg);
}
</script>

<table border="0" cellpadding="0" cellspacing="0" style="border-collapse: collapse"
bordercolor="#111111" width="100%">
<tr>
<td ><a href=javascript:callViewerFunction("SearchResultMoveNext")>Next Search Result</a></td>
<td ><a href=javascript:callViewerFunction("SearchResultMovePrevious")>Prev Search Result</a></td>
<td ><a href=javascript:callViewerFunction("SelectText")>SelectText</a></td>
<td ><a href=javascript:callViewerFunction("PrintRange", "1,2")>Print Range</a></td>
<td ><a href=javascript:callViewerFunction("getTotalPages",0)>getTotalPages</a></td>
<td ><a href=javascript:callViewerFunction("Previous",0)>Previous</a></td>
<td ><a href=javascript:callViewerFunction("ZoomTo",200)>Zoom Value</a></td>
<td ><a href=javascript:callViewerFunction("ZoomIn",0)>ZoomIn</a></td>
<td ><a href=javascript:callViewerFunction("ZoomOut",0)>ZoomOut</a></td>
<td ><a href=javascript:callViewerFunction("FitWidth",0)>FitWidth</a></td>
<td ><a href=javascript:callViewerFunction("MoveDown",0)>MoveDown</a></td>
<td ><a href=javascript:callViewerFunction("MoveUp",0)>MoveUp</a></td>
<td ><a href=javascript:callViewerFunction("MoveLeft",0)>MoveLeft</a></td>
<td ><a href=javascript:callViewerFunction("MoveRight",0)>MoveRight</a></td>
<td ><a href=javascript:callViewerFunction("RotateTo",-90)>RotateTo</a></td>
<td ><a href=javascript:callViewerFunction("Rotate",0)>Rotate</a></td>
<td ><a href=javascript:callViewerFunction("Print",0)>Print</a></td>
<td ><a href=javascript:callViewerFunction("PrintAll",0)>Print All</a></td>
<td ><a href=javascript:callViewerFunction("MovetoPage", "4")>Move to Page 4</a></td>
</tr>
</table>
```

**sendTextToFlash** requires 2 arguments – Command:String and Argument:String or Number  
 Argument is 0 in all cases except for Command MoveToPage where argument is pageNumber  
 Argument is 0 in all cases except for Command Search where argument is String- the text to be searched

sendTextToFlash function is used to interact with Viewer and following events can be sent:

Event	Details
Next	Move to next page
Previous	Move to pervious page
ZoomIn	Zoom In on the document
ZoomOut	Zoom Out on document
ZoomTo	Zoom to a certain specified size
FitToWidth	Set Zoom=100%
MoveDown	Move the page down
MoveUp	Move the page up
MoveLeft	Move the page left
MoveRight	Move the page right
Print	Print the document. Opens print dialog.
PrintAll	Print all pages in the document. Does not open the print dialog.
PrintRange	Print specific pages in document. Does not open the print dialog.
Rotate	Rotate the document by 90 degree
MovetoPage	Move to a specific page in document and pass page number
Search	Starts search of the string
SearchResultMoveNext	Move to next search highlighted result
SearchResultMovePrevious	Move to previous search highlighted result
SelectText	Turns on the text selector
getTotalPages	Returns total pages in document. Calls viewerTotalPages(page) event

## Receiving events from Viewer

Viewer can send events when certain actions are performed in the viewer.

To receive the events follow these steps:

- 1) Pass a FlashVar to Viewer.swf to indicate you will be sending events to Viewer

getViewerEvents=Yes

- 2) Add the javascript code in your page as shown below

```
<script language="javascript">
function viewerOnDocumentRotate(document)
{
  alert(document+" Rotated");
}
function viewerOnSelectText(textSelected)
{
  alert("User Copied the text out of document"+ textSelected);
}
</script>
```

Following events are sent by Viewer.swf

<b>Event</b>	<b>Details</b>
viewerOnDocumentZoom(documentname, zoom)	Zoom is pressed. Returns documentname & zoom size
viewerOnDocumentScroll(documentname)	Document is scrolled
viewerOnDocumentLoad(documentname)	Document is loaded in the viewer
viewerOnDocumentDownload(documentname)	Document is downloaded/Save button was pressed
viewerOnDocumentRotate(documentname)	Document is rotated by 90 degree
viewerOnDocumentPrint(documentname)	Print button was clicked
viewerOnDocumentPrintCancel(documentname)	Cancel for Print was clicked
viewerOnDocumentFullScreen(documentname)	Document is viewed in Full Screen Mode
viewerOnSelectText(string)	Returns the highlighted text that is copied by the user
viewerOnDocumentError(errorcode)	Called when an error occurs
viewerOnDocumentSearch(textToSearch)	Search is done in the document. Also passed the search keyword.
viewerCurrentPage(page)	Returns page of document being viewer
viewerTotalPages(page)	Returns total pages in document

### Localizing the Viewer

Prizm Content Connect can be totally localized to the languages needed.

To localize the viewer, simply pass a Flash Variable tooltip with location of XML file containing the language tooltips.

For example to display Hindi Language tooltips, simply pass FlashVar as

**tooltips=hindi.xml**

where hindi.xml is the following xml file residing at same location as Viewer.swf

```
<tooltips>
<PreviousPage>पिछले पृष्ठ</PreviousPage>
<CurrentPage>वर्तमान पृष्ठ</CurrentPage>
<TotalPages>कुल पृष्ठ</TotalPages>
<NextPage>अगले पृष्ठ</NextPage>
<ZoomIn>ज़ूम दस्तावेज में</ZoomIn>
<ZoomOut>ज़ूम आउट दस्तावेज</ZoomOut>
<FitToWidth>फिट दस्तावेज़ चौड़ाई</FitToWidth>
<Rotate>घुमाएँ</Rotate>
<ZoomSlider>ज़ूम स्लाइडर</ZoomSlider>
<CurrentZoom>वर्तमान ज़ूम</CurrentZoom>
<TextToSearch>पाठ को खोजें</TextToSearch>
<SearchTextBox>पाठ को खोजें</SearchTextBox>
<StartSearch>शुरू खोज</StartSearch>
<SearchResults>खोज परिणाम</SearchResults>
<PreviousSearchResult>पिछले खोज परिणाम</PreviousSearchResult>
<NextSearchResult>अगले खोज परिणाम</NextSearchResult>
<CloseSearch>बंद खोज</CloseSearch>
<SelectText>पाठ का चयन करें</SelectText>
<PrintDocument>प्रिंट दस्तावेज</PrintDocument>
<ConfirmPrintDocument>प्रिंट दस्तावेज</ConfirmPrintDocument>
<CancelPrintDocument>रद्द दस्तावेज़ प्रिंट</CancelPrintDocument>
<FullScreen>पूर्ण स्क्रीन</FullScreen>
<fullscreenNoticeText>आप पूर्ण स्क्रीन मोड में प्रवेश किया है। कृपया ध्यान दें कि कुंजीपटल नियंत्रण करते हुए इस मोड में
उपलब्ध नहीं हैं।</fullscreenNoticeText>
<fullscreenNoticeSupressCheckbox>यह चेतावनी फिर से न दिखाएँ </fullscreenNoticeSupressCheckbox>
<fullscreenNoticeOKButton>ठीक है</fullscreenNoticeOKButton>
</tooltips>
```

### Generating Thumbnails

Prizm Content Connect has a built in script to generate thumbnail images of the various pages of the documents. These thumbnails can be displayed as png image files in various applications or used to create several applications like thin client viewer, mobile viewer etc

For creating a batch process or other applications, thumbnails can be generated using convert2swfclient or by using the Webservice.

#### Generating thumbnails using convert2swfclient

**Example 1:**

To create a thumbnail of page 1 of sample.doc

```
java -jar convert2swfclient.jar source=sample.doc thumbnail=100x100 pages=1
```

**Example 2:**

To create a thumbnail of all pages of sample.doc

```
java -jar convert2swfclient.jar source=sample.doc thumbnail=100x100
```

#### Generating thumbnails using Webservice

**Example 1:**

To create a thumbnail of page 1 of sample.doc

<http://localhost:18680/convert2swf?>

[source=/var/www/html/samplecode/sample.doc&thumbnail=100x100&pages=1](http://localhost:18680/convert2swf?source=/var/www/html/samplecode/sample.doc&thumbnail=100x100&pages=1)

**Example 2:**

To create a thumbnail of all pages of sample.doc

```
java -jar convert2swfclient.jar source=sample.doc thumbnail=100x150
```

<http://localhost:18680/convert2swf?>

[source=/var/www/html/samplecode/sample.doc&thumbnail=100x150](http://localhost:18680/convert2swf?source=/var/www/html/samplecode/sample.doc&thumbnail=100x150)

### Generating Images

Prizm Content Connect has a built in script to generate images (jpeg, png, tiff or bmp) of the various pages of the documents.

Related arguments

source	the source file for conversion.
target	the target folder and target file. Target can be image (jpeg, png, tiff or bmp)
dpi	for specifying depth per index ratio of output swf and image files

#### Generating images using convert2swfclient

##### Example 1:

To create a .png image of page 1 of sample.doc:

```
java -jar convert2swfclient.jar source=sample.doc target=sample.png pages=1
```

To create a .bmp image of page 1 of sample.doc:

```
java -jar convert2swfclient.jar source=sample.doc target=sample.bmp pages=1
```

##### Example 2:

To create a .pngp image of all pages of sample.doc:

```
java -jar convert2swfclient.jar source=sample.doc target=sample.png
```

To create a .tiff image of all pages of sample.doc:

```
java -jar convert2swfclient.jar source=sample.doc target=sample.tiff
```

#### Generating images using Webservice

##### Example 1:

To create a .png image of page 1 of sample.doc:

```
http://localhost:18680/convert2swf?  
source=/var/www/html/samplecode/sample.doc&target=/var/www/html/samplecode/sample.png  
&pages=1
```

To create a .bmp image of page 1 of sample.doc:

```
http://localhost:18680/convert2swf?  
source=/var/www/html/samplecode/sample.doc&target=/var/www/html/samplecode/sample.bm  
p&pages=1
```

##### Example 2:

To create a .png image of all pages of sample.doc:

```
http://localhost:18680/convert2swf?  
source=/var/www/html/samplecode/sample.doc&target=/var/www/html/samplecode/sample.png
```

To create a .tiff image of all pages of sample.doc:

```
http://localhost:18680/convert2swf?  
source=/var/www/html/samplecode/sample.doc&target=/var/www/html/samplecode/sample.tiff
```

## Extracting Text

Prizm Content Connect has a built in script to extract text from any type of document.

Related arguments

source	the source file for conversion.
target	the target folder and target file

### Extracting text using convert2swfclient

#### Example 1:

To extract text of all pages sample.doc and place in same directory as source:

```
java -jar convert2swfclient.jar source=sample.doc target=sample.txt
```

#### Example 2:

To extract text of page 1 sample.doc and place in same directory as source:

```
java -jar convert2swfclient.jar source=sample.doc target=sample.txt pages=1
```

#### Example 3:

To extract text of page 1 sample.doc and place in a different directory:

```
java -jar convert2swfclient.jar source=sample.doc target=/var/www/html/samplecode/sample.txt  
pages=1
```

### Extracting text using Webservice

#### Example 1:

To extract text of all pages sample.doc and place in same directory as source:

<http://localhost:18680/convert2swf?>

[source=/var/www/html/samplecode/sample.doc&target=/var/www/html/samplecode/sample.txt](http://localhost:18680/convert2swf?source=/var/www/html/samplecode/sample.doc&target=/var/www/html/samplecode/sample.txt)

#### Example 2:

To extract text of page 1 sample.doc and place in same directory as source:

<http://localhost:18680/convert2swf?>

[source=/var/www/html/samplecode/sample.doc&target=/var/www/html/samplecode/sample.txt  
&pages=1](http://localhost:18680/convert2swf?source=/var/www/html/samplecode/sample.doc&target=/var/www/html/samplecode/sample.txt&pages=1)

#### Example 3:

To extract text of page 1 sample.doc and place in a different directory:

<http://localhost:18680/convert2swf?>

[source=/var/www/html/samplecode/sample.doc&target=/var/www/html/samplecode/sample.txt  
&pages=1](http://localhost:18680/convert2swf?source=/var/www/html/samplecode/sample.doc&target=/var/www/html/samplecode/sample.txt&pages=1)

### Client Side Flash Detection

Prizm Content Connect's AJAX based document viewer requires the client browser to have version 9 of Flash Player Kit or Plugin installed.

This chapter provides details on how developers can detect the installed version of Flash Player using Client-Side Scripting. There are several ways to detect the flash version.

This method uses JavaScript to check for the existence of a Netscape plug-in or an ActiveX control, and provides the logic for either displaying your Flash content or initiating an installation of the correct player version. Use script-based detection when deploying Flash content to modern browsers and operating systems. If you want to display alternate content based on the configuration of end users' computers and browsers, script-based detection can determine version and configuration information that is not detectable by other methods.

#### Client-side detection method sample files

<http://www.adobe.com/devnet/flashplayer/articles/swfobject.html>

Here is an example of detecting the flash version using JavaScript SWF Object:

```
<script src="swfobject.2.2.js" language="javascript"></script>
<script type="text/javascript">
var playerVersion = swfobject.getFlashPlayerVersion();
var output = "You have Flash player " + playerVersion.major + "." + playerVersion.minor + "." +
playerVersion.release + " installed"; alert(output);
</script>

<script type="text/javascript">
    var params = {
        wmode: 'opaque',
        scale: 'noscale',
        allowFullScreen: true,
        allowScriptAccess: 'always',
        bgcolor: '#ffffff'
    };
    var attributes = {
        id: 'viewer',
        name: 'viewer'
    };
    var flashvars = {
        documentname: '<? echo $filename; ?>',
        saveDocumentLocation: 'savedocument.php'    };
    swfobject.embedSWF("Viewer.swf?<? echo time(); ?>", "documentviewer", "620", "800",
"10.0.0", false, flashvars, params, attributes);
</script>
<noscript>
Javascript needs to be enabled to view the document in viewer.
</noscript>
<div id="documentviewer"></div>
```

## Error Codes & Exception Handling

Prizm can throw exceptions at two different levels – Viewer & Convert2SWF.jar

### Viewer Error Codes

Error Code	Description of Error
10000	Document could not be loaded. Please specify the 'documentname' variable in your html code
10001	Settings XML File Not Found. Make sure settings.xml file exists in same location as viewer.swf
10002	Input Output Fast Page Count Error. getFastPageCount file not found or contains error
10003	Security Fast Page Count Error. getFastPageCount file not accessible
10004	This document has only n pages.Wrong start page given
10005	Input Output Total Pages Error. getTotalPages file not found or contains error
10006	Security Total Pages Error. getTotalPages file not accessible
10007	Internal Argument Error
10008	Container Security Error
10009	External interface not available
10010	Input Output Page Conversion Error. Conversion file not found or contains error
10011	Security Page Conversion Error. Conversion file not accessible
10012	Input Output Page Load Error. Generated swf file on server not accessible or cannot be loaded
10013	Security Fast Page Load Error. Generated swf file on server not accessible
99999	Unknown Error

### Convert2SWF Error & Exception Codes:

FlexiDocException signals that some exception has occurred in OpenOffice.org background process.

### FlexiDocException

```
public FlexiDocException(java.lang.String message,
    int errorId,
    java.lang.Exception runtimeException)
```

Constructs a new FlexiDocException with a message, error id and Exception object.

Parameters:

message - a string containing the error message

errorId - a number containing error id

runtimeException - an Exception object to be stored inside new FlexiDocException object

Exception Summary	
ERROR_CALC_SHEET	an error has occurred manipulating a document in calc (201)
ERROR_CONNECTION_INIT	error while connection initialization (1)
ERROR_CONVERT_INIT	error while conversion initialization (2)
ERROR_EXCEPTION	reserved for general exception (9999)
ERROR_OK	no error (0)
ERROR_WRITER_IMAGE	an error has occurred manipulating an image in writer (103)
ERROR_WRITER_OPENDOC	an error has occurred while opening document in writer(101)
ERROR_WRITER_SAVEDOC	an error has occurred while saving document in writer (102)

## Fine Tuning the Prizm Application

Prizm proxy service is required to be running for convert2swf utility to run. This service is installed and started during the installation process. Prizm Service basically creates a proxy which handles the document conversions and provides load balancing by using various ports on the machine. The Prizm Proxy Server will need to be fine tuned based on the load you are expecting on your server. By default AJAX Document Proxy Server runs as a service on port 18580,18680 and uses several ports. You can add more ports as your server load increases.

Prizm Proxy can be started from command line using the following syntax

```
java -jar bin\convert2swf.jar proxyconfig=conf/ proxyserver_jar.properties
```

**run\_proxy** script can be also be used to start the proxy directly from the command line.

**proxyserver\_jar.properties** contains the parameters and port information needed for Prizm Proxy Service to run.

**jrunner.properties** contains the Prizm Proxy Service setup information.

jrunner-linux-x86-64.properties and jrunner-linux-x86-32.properties depending on OS.

jrunner-linux-x86-32.properties for 32 bit Linux OS

jrunner-linux-x86-64.properties for 64 bit Linux OS

*convert2swf\_proxy.properties & jrunner.properties are located in conf directory.*

To set up the service manually or to start the service manually you can use the included utilities to start, stop or install and uninstall the service. These utilities reside in 'scripts' folder under installation directory.

Script	Description	Arguments
install-service	Install the Prizm Service	
start-service	Start the Prizm Service	
stop-service	Stop the Prizm Service	
remove-service	Remove the Prizm Service	

### proxyserver\_jar.properties

convert2swf proxy needs proxyserver\_jar.properties to run and you can change the proxy server configuration by changing the parameters in proxyserver\_jar.properties file.

Parameter	Value
http_host	HTTP server listen host or IP (This is host for Prizm Webservice)
http_port	HTTP server listen port
http_workers_ini	HTTP server initial number of workers
http_workers_max	HTTP server maximum number of workers
http_socket_timeout	HTTP server socket timeout
http_response_timeout	HTTP server response timeout
proxy_host	Proxy listen host or IP
proxy_port	Proxy listen port
ooo_installation	Location where open office is located in Prizm installation directory
Customerid	Registration info

	customerid provided after purchase of product
Regkey	Registration Key regkey provided after purchase of product
proxy_host	Location where proxy server is running. Default Value is Localhost
work_directory	work directory (contains proxy workers user profiles and temporary files) Default Value is ../work
ooo_worker_host	OpenOffice.org workers base host or IP Default Value is localhost
ooo_instances	Number of OpenOffice.org instances (workers) to be started Each worker listens on ooo_base_host:[ooo_base_port+instance_number], where instance_number = {0, 1, ..., (ooo_instances-1)} ooo_instances=2  You can start more instances based on load over your server. Each instance on average requires about 150MB dedicated RAM to run. Default value is 2
ooo_startup_delay	Number of seconds to wait for a worker instance to start. The parameter is important during startup. If the any of instance working thread does not respond within this interval such situation is treated as 'fatal error' and the proxyserver exits. Default value is 60
ooo_usage_count	Number of 'uses' after which worker instance will be restarted Once the worker thread hits this limit the threads are restarted. Default value is 20
ooo_usage_count_rand	Random attribute for usage count to avoid load peaks after certain point of time Default value is 5
sleeping_delay	Number of seconds how long the proxy should put worker in 'sleeping mode' before it will be assigned another task (helps garbage collector) Default value is 2
shutdown_delay	Number of seconds how long the proxy should wait for the shutdown of a worker thread Default value is 1
worker_timeout	Number of seconds how long the single worker thread is allowed to run Default value is 300
log_level	Logging levels NONE shows no output at all ERROR shows only errors and fatal errors INFO shows information messages WARNING shows warnings DEBUG shows debugging information (very verbose!) Default Value is INFO <i>Logs are created under log directory</i>
jvm_daily_restart	JVM daily auto restart schedule for cleaning and Garbage Collection Set this to time during the day when you get low traffic Default Value is 6AM - 6:00 You can also specify multiple values 6:00,11:00,22:00

## jranner.properties

jranner.properties contains the Prizm Service installation & startup parameters.

Parameter	Default Value
jranner.java.command	Java Application. (Do not change this) java
jranner.java.mainclass	Java Main class. (Do not change this) com.ilifron.JRunner
jranner.java.classpath.1	Add class path elements as needed starting from 1(Do not change this) proxyserver.jar
jranner.working.dir	working directory that is used after the jranner is initialized(Do not change this) ./
jranner.app.parameter.1	Application parameters. Add parameters as needed starting from 1(Do not change this) proxyconfig=../conf/proxyserver.jar.properties
jranner.java.initmemory	Initial Java Heap Size (in MB) Default Value is 30
jranner.java.maxmemory	Maximum Java Heap Size (in MB) Default Value is 1024
jranner.shutdown.timeout	Maximum timeout to wait for the process shutdown

	Default Value is 120
jranner.jvm_exit.timeout	Maximum timeout to wait for JVM to shutdown Default Value is 120
jranner.console.format	Logging Properties Format of output for the CONSOLE.  The format consists of the tokens 'L' for log level 'P' for prefix 'D' for thread 'T' for time 'Z' for millisecond time 'M' for message  If the format contains these values then it will be included in the format. The order of the tokens does not affect the way the log appears, but the 'M' token should usually be placed last as it is the only column without a uniform width. If the property is missing or commented out, then the default value 'LPTM' will be used. Setting the property to a blank value will cause file logging to be disabled. Default value LPZM <i>Log are created under logs directory</i>
jranner.console.loglevel	The Valid log levels are: NONE - no output messages at all FATAL - show fatal error messages only ERROR - show all error messages STATUS - show all state changes INFO - shows all JVM output and informative messages DEBUG - shows detailed debug information The default value is INFO <i>Log are created under logs directory</i>
jranner.logfile	Log file to use for jRunner output logging. Either relative to jranner.working.dir or full path. Default Value is ../logs/proxyserver.log
jranner.logfile.maxsize	Maximum size that the log file will be allowed to grow to before the log is rolled. Size is specified in bytes. The default value of 0, disables log rolling. May abbreviate with the 'k' (kb) or 'm' (mb) suffix. For example: 10m = 10 megabytes. Default Value is 0
jranner.logfile.maxfiles	Maximum number of rolled log files which will be allowed before old files are deleted. The default value of 0 implies no limit.
jranner.syslog.loglevel	Log Level for sys/event log output. Default value is NONE
jranner.console.title	Title to use when running as a console Default value 'Convert2SWF Proxy Server Console'
jranner.ntservice.name	Name of the service Convert2SWFSvc
	Display name of the service jranner.ntservice.displayname=Prizm
jranner.ntservice.description	Description of the service Run Convert2SWF Proxy Server Service helper for converting documents to SWF format
jranner.ntservice.dependency.1	Service dependencies. Add dependencies as needed starting from 1 Default Value is blank
jranner.ntservice.starttype	Mode in which the service is installed. AUTO_START or DEMAND_START AUTO_START
jranner.ntservice.interactive	Allow the service to interact with the desktop. Default value is false

## Distributed Configuration Set Up

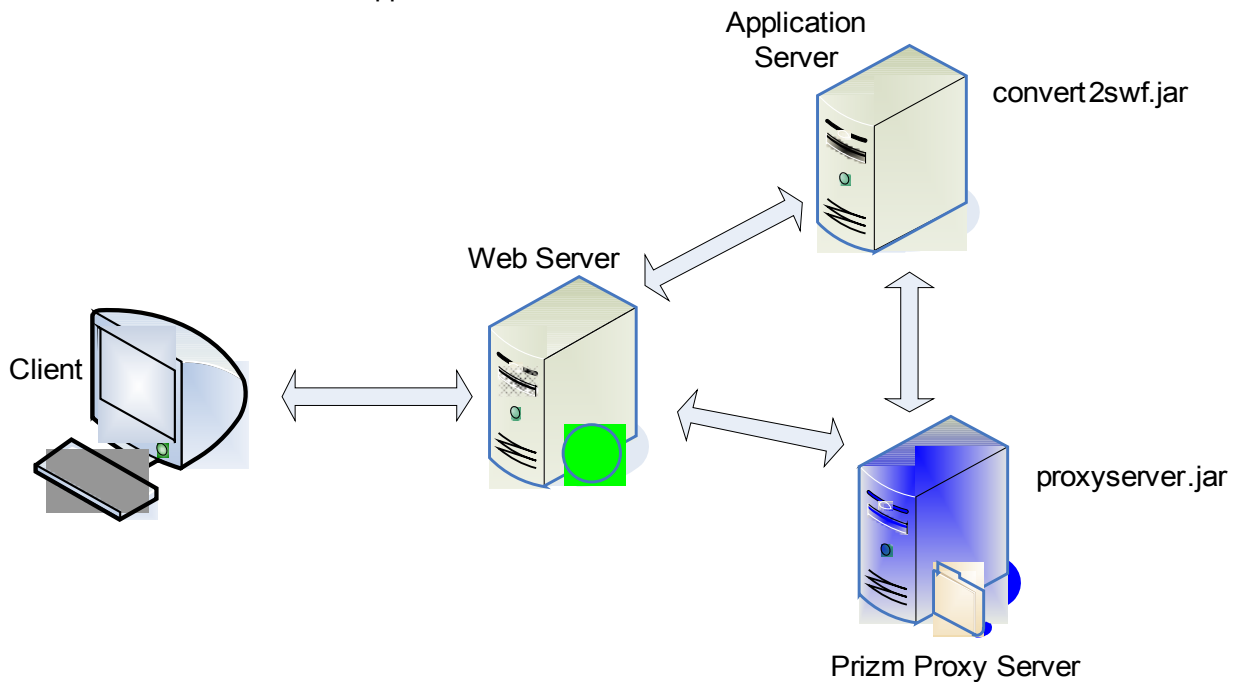
Prizm Content Connect can be configured in a distributed environment set up to achieve higher conversion rates. Prizm Proxy Server serves as a conversion server and runs Open Office. proxyserver.jar resides on Prizm Proxy Server and does the conversion of documents. convert2swf.jar resides on the Application Server and connects to the Prizm Proxy Server for conversion.

### Steps to set up Prizm in Distributed mode:

- 1) Install Prizm Application on Proxy Server. Stop the proxyserver service from scripts
- 2) Open conf directory and then proxyserver config file. Replace all occurrences of "localhost" with ip address of the server
- 3) Start the proxrserver service from scripts

You can now access the conversion service from other server like this <http://<ipaddress>:18680/>

192.168.0.1:18580 is the IP Address of the Proxy Server and 18580 is the port at which Proxy Server is running  
source is the location of file on Application Server



Distributed Configuration

# Troubleshooting

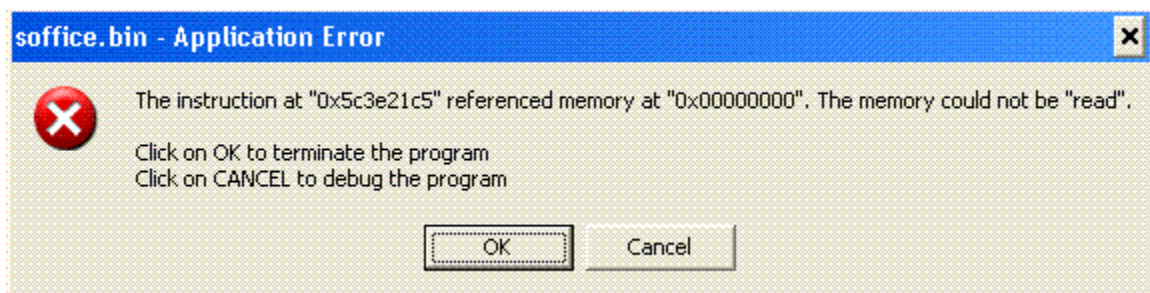
### Why does a DEMO watermark appear on my documents?

A DEMO watermark is added to documents in evaluation or trial license.

### Why does installation fail during setting up or starting services?

This happens because you do not have Administrator rights on the machine to install the software properly. Logout and Login into the machine as Administrator.

### I get this office error when running the convert2swf?



This error can occur due to several reasons, but one of the primary reasons is that your server does not have enough memory available to run conversion threads. Reduce the number of conversions threads or it is time to increase server RAM. *Refer to Fine Tuning the Prizm Application Chapter for details.*

### Resizing the viewer height/width dynamically using JavaScript

Javascript calls can dynamically resize the viewer as required

```
function resetviewersize(){  
var flash = document.getElementById("Viewer");  
flash.setAttribute("width","1610");  
flash.setAttribute("height","1147");  
}
```

### Setting height/width of viewer to height/width of browser

Add the JavaScript code given below to top of your page

```
var viewportwidth;  
var viewportheight;
```

```
// the more standards compliant browsers (mozilla/netscape/opera/IE7) use window.innerWidth and window.innerHeight
if (typeof window.innerWidth != 'undefined')
{
viewportwidth = window.innerWidth,
viewportheight = window.innerHeight
}
// IE6 in standards compliant mode (i.e. with a valid doctype as the first line in the document)
else if (typeof document.documentElement != 'undefined'
&& typeof document.documentElement.clientWidth !=
'undefined' && document.documentElement.clientWidth != 0)
{
viewportwidth = document.documentElement.clientWidth,
viewportheight = document.documentElement.clientHeight
}
// older versions of IE
else
{
viewportwidth = document.getElementsByTagName('body')[0].clientWidth,
viewportheight = document.getElementsByTagName('body')[0].clientHeight
}
// Adding adjust 50 pixels to fit to all browsers
// You can adjust this as required
viewportwidth =viewportwidth -50;
viewportheight =viewportheight -50;
document.write('

Your viewport width is '+viewportwidth+'x'+viewportheight+'

');
```

and then you can pass viewportwidth,viewportheight like this in flash code

```
<script src="swfobject.2.2.js" language="javascript"></script>
<script type="text/javascript">
var params = {
wmode: 'opaque',
scale: 'noscale',
allowFullScreen: true,
allowScriptAccess: 'always',
bgcolor: '#ffffff'
};
var attributes = {
id: 'viewer',
name: 'viewer'
};
var flashvars = {
documentname: '<? echo $filename; ?>',
saveDocumentLocation: 'savedocument.php?document=<? echo $filename; ?>'
};
swfobject.embedSWF("Viewer.swf?<? echo time(); ?>", "documentviewer", viewportwidth ,
viewportheight, "10.0.0", false, flashvars, params, attributes);
</script>
<noscript>
Javascript needs to be enabled to view the document in viewer.
</noscript>

<div id="documentviewer"></div>
```

This will load the flash viewer to the size of the browser.

### How to prevent caching of swf on end user browser

You can set cache=no when you stream your swf to the viewer after conversion in convert.php

```
$filename = "test_cache.swf";
header('Content-type: application/x-shockwave-flash');

header("Expires: Thu, 01 Jan 1970 00:00:00 GMT, -1 ");
header("Cache-Control: no-cache, no-store, must-revalidate");
header("Pragma: no-cache");

$content = file_get_contents($filename);
echo$content;
```

## Setting firewall settings in proxyserver.config

If you are running proxyserver behind a firewall on machine or LAN, you can set the firewall in proxyserver

For Java JAR deployments, you can simply do this...

Specifying proxy in convert2swf.war

In web.xml you may also specify the HTTP / HTTPS proxy as follows:

```
<context-param>
<description>http and https proxy host:port</description>
<param-name>httpProxy</param-name>
<param-value></param-value>
</context-param>
<context-param>
<description>http and https proxy user</description>
<param-name>httpProxyUser</param-name>
<param-value></param-value>
</context-param>
<context-param>
<description>http and https proxy password</description>
<param-name>httpProxyPassword</param-name>
<param-value></param-value>
</context-param>
```

Please find the nodes above in web.xml that is distributed with the package.

Specifying proxy for jrunner / proxyserver environment

Open jrunner.properties and add following at the end of the config file

```
jrunner.java.additional.1=-Dhttp.proxyHost=YOUR_HOST
jrunner.java.additional.2=-Dhttp.proxyPort=YOUR_PORT
jrunner.java.additional.3=-Dhttp.proxyUsername=YOUR_USER_NAME
jrunner.java.additional.4=-Dhttp.proxyPassword=YOUR_PASSWORD
```

## Viewer flickers in IE on load

This is due to the fact the browsers at times cannot clear the cache automatically.

Just add a random variable with Viewer, so that it does not load the older file from cache and loads it fresh every time. That should take care of your problem.

`<%= time() %>` or `<?php echo time ?>` should be passed to viewer src to load afresh every time.